

Nové možnosti rozvoje vzdělávání na Technické univerzitě v Liberci
Specifický cíl A2: Rozvoj v oblasti distanční výuky, online výuky a blended learning

NPO_TUL_MSMT-16598/2022



Vazby a navrhování tkanin
13. Inspirační zdroje

Ing. Vlastimila Bergmanová





Módní trendy

Ukázka práce italských návrhářů – metrový textil (2017)
Ukázka z textilního veletrhu Premiere Vision (březen 2019)
VVT 2019
Bergmanová



italtex

[Login](#)
[Register](#)
[Contact Us](#)

[Home](#)

[Trends](#)

[Fabrics Library](#)

[Books](#)

[Shop](#)

[About Us](#)

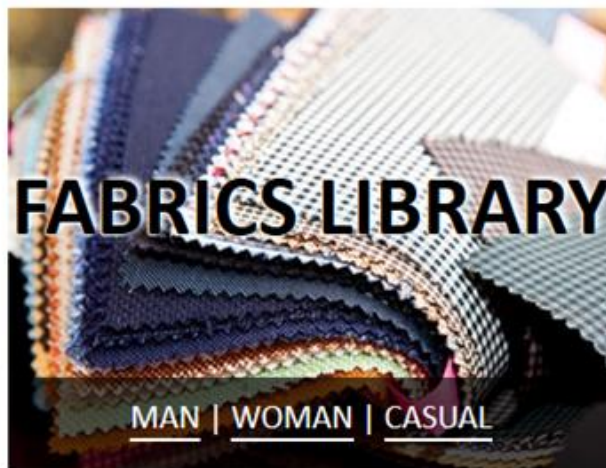
[Contacts](#)



<http://www.italtextrends.com/en>



MENSWEAR | WOMENSWEAR | SHIRTING



MAN | WOMAN | CASUAL



TREND | ARCHIVES | TECHNICAL



**MILAN
TRENDING NOW SS 2017**



Trend Books



Yarns



**Denim Trends from
VIEW2 Magazine**



PANTONE FASHION, HOME + INTERIORS

210 NEW COLORS

210 NEW COLOR ON COLOR

210 NEW COLORS

PANTONE



**MILAN
TRENDING NOW FW 16/17**



**PREMIERE VISION
FABRICS**

THE WORLD'S PREMIER
FABRIC SHOW™

7-9 FEB. 2017

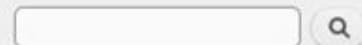
PARIS NORD - VILLEPINTE, HALL 5 & 6



15 - 17.3.2017

National Exhibition and Convention
Center (Shanghai),
China

www.intertextileapparel.com



WOMENSWEAR TRENDS FW 2017/18



[Home](#) / [Trends](#) / [Womenswear Trends](#)

[Home](#)

Trends

[Menswear Trends](#)

[Womenswear Trends](#)

[Fall Winter 2017/2018](#)

[Spring/Summer 2017](#)

[Fall/Winter 2016/2017](#)

[Spring/Summer 2016](#)





WHITE

PANTONE ®11-1404TPX

PANTONE ®19-0303TPX

PANTONE ®13-3820TPX

PANTONE ®14-3904TPX

PANTONE ®14-3907TPX

PANTONE ®14-3901TPX



ESSENTIALS

Season after season white, off-white, black remain steadily in demand, both as plains and combined in small and large scale patterns that can be well defined or innotively mottled and definitely huge.

The grey scale in felted and flannel qualities mainly in melange for new interpretations between urban and sportswear.

PIECE DYED

PANTONE @16-1305TPX	PANTONE @14-1209TPX	PANTONE @18-1235TPX
PANTONE @17-1321TPX	PANTONE @16-1318TPX	PANTONE @18-1244TPX
PANTONE @19-0916TPX	PANTONE @17-1134TPX	PANTONE @18-1415TPX
PANTONE @18-0403TPX	PANTONE @17-1316TPX	PANTONE @19-3406TPX

YARN DYED

PANTONE @16-1305TPX	PANTONE @18-1235TPX
PANTONE @16-1318TPX	PANTONE @17-1316TPX
PANTONE @17-2601TPX	PANTONE @18-1415TPX
PANTONE @17-1134TPX	PANTONE @19-0916TPX

LANDSCAPES

A range of neutrals and of coloured neutrals with a warm note either with yellowish or orange hint. A timeless palette for classic double cloth, for hairy and boucle surfaces but for easy checks as well.

COMBINATIONS

	PANTONE @16-1318TPX	
PANTONE @19-0916TPX		
PANTONE @16-1305TPX	PANTONE @16-1318TPX	PANTONE @19-0916TPX
PANTONE @16-1305TPX	PANTONE @17-2601TPX	PANTONE @19-0916TPX
PANTONE @16-1305TPX	PANTONE @17-2601TPX	PANTONE @17-2601TPX
PANTONE @17-2601TPX	PANTONE @17-2601TPX	PANTONE @17-2601TPX
PANTONE @19-0916TPX	PANTONE @17-2601TPX	PANTONE @19-0916TPX

COMBINATIONS

PANTONE @14-3903TPX

PANTONE @14-4002TPX

PANTONE @17-1510TPX

PANTONE @14-3949TPX

PANTONE @15-2706TPX

PANTONE @18-1210TPX

PANTONE @17-3915TPX

PANTONE @15-3807TPX

PANTONE @17-3906TPX

PANTONE @17-3812TPX

MUTED COLOUR STORY

Light and medium depth shades with just a hint of colour, neutral, pinky, yellowish beige with greyish light blue, brown, grey, slate blue and violet, refined and toned down.

PIECE DYED



YARN DYED

PANTONE @14-4002TPX

PANTONE @15-2706TPX

PANTONE @14-3911TPX

PANTONE @14-3805TPX

PANTONE @17-3812TPX

PANTONE @18-3933TPX

PANTONE @18-1210TPX

PANTONE @19-0101TPX

PIECE DYED

PANTONE @19-1758TPX

PANTONE @19-1842TPX

PANTONE @19-2033TPX

PANTONE @19-1940TPX

PANTONE @19-2118TPX

SATURATED REDS

Intense shades ranging iron bright red and purple to magenta and burgundy: in jacquard designs, in coarse fake plains and checks matched to black and white.

COMBINATIONS

PANTONE @19-1758TPX

PANTONE @14-3803TPX

PANTONE @19-2901TPX

PANTONE @14-3903TPX

PANTONE @19-2033TPX

PANTONE @19-4006TPX

PANTONE @15-2205TPX

PANTONE @19-2033TPX

PANTONE @19-1940TPX

YARN DYED

PANTONE @14-3903TPX

PANTONE @14-3803TPX

PANTONE @15-2205TPX

PANTONE @19-1758TPX

PANTONE @19-1842TPX

PANTONE @19-2033TPX

PANTONE @19-1720TPX

PIECE DYED

PANTONE @16-0739TPX

PANTONE @16-0439TPX

PANTONE @18-0835TPX

PANTONE @17-0535TPX

PANTONE @18-1048TPX

PANTONE @18-0627TPX

PANTONE @18-5718TPX

OUTDOOR

For contemporary tweeds and light giant jacquards, for easy checks, for embroidered light crepe and textured plains.

YARN DYED

PANTONE @14-4002TPX

PANTONE @15-3908TPX

PANTONE @18-0835TPX

PANTONE @17-0230TPX

PANTONE @18-4034TPX

PANTONE @18-1048PX

PANTONE @18-5718PX

PANTONE @18-0627PX

PANTONE @19-0614PX

PANTONE @19-0614TPX

PANTONE @15-3908TPX

PANTONE @

19-4008TPX

PANTONE @

18-0627PX

COMBINATIONS

PANTONE @17-0230TPX

PANTONE @18-1048PX

PANTONE @18-5718PX

PANTONE @19-0614PX



YARN DYED

PANTONE @15-4307PX	PANTONE @18-4041PX	PANTONE @19-4114PX
PANTONE @18-3914PX	PANTONE @19-3964PX	PANTONE @18-4010PX
PANTONE @19-4104PX	PANTONE @19-4065PX	PANTONE @18-5611PX
	PANTONE @19-3936PX	

YARN DYED

PANTONE @15-3908TPX
PANTONE @15-4306TPX
PANTONE @16-5917TPX
PANTONE @17-4020TPX
PANTONE @17-3924TPX
PANTONE @15-4307TPX
PANTONE @19-3936TPX
PANTONE @19-4125TPX

VARIATIONS ON BLUE AND GREEN
 Blue and green gain ground and enlarge to indigo inspired to inky blues, to teal and new dark greens.

COMBINATION

	PANTONE @14-3911TPX	
	PANTONE @18-4041PX	
PANTONE @15-4307TPX		PANTONE @15-3908TPX
		PANTONE @18-4041PX
PANTONE @17-4020TPX		PANTONE @19-4125TPX
	PANTONE @19-3936TPX	
		PANTONE @15-4306TPX
		PANTONE @16-5917TPX
		PANTONE @19-4125TPX

ALL THAT'S SOFT

Warm softness of brushed long hair mohairs, of fine and coarse bouclé and fancy yarns, both in woven and knit qualities, enveloping rich wool mixtures and flannelised cottons. Often in the grey and naturals scales, woven and knitted felts, two tones fake plaids, and barely visible plaids in milled flannel. Cocooning wool coat is one of the key word of the season.

1

2

3

4

5

6

7

8

9

DOUBLE FACE coatings and bondings

1



3



4

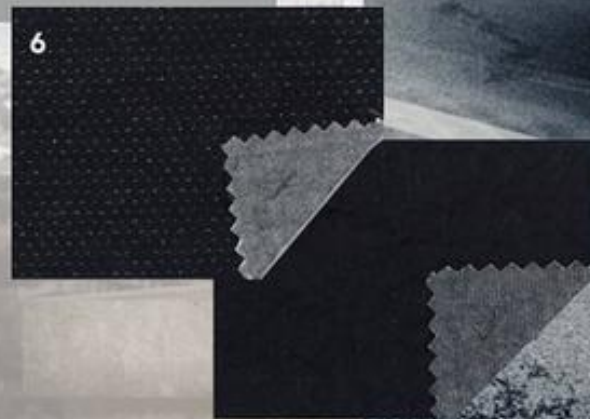


2



An image including a large variety of solutions, from the classic elegant both sides plain, to the patterned face or reverse, in solid or mixture yarns, soft and bulky or clear cut medium weight. Beside the weave doubles come the outstanding coating and bonding interpretations. Light coating adding just a hint of colour or film coating changing the surface into a plastic, varnish image, very much in The mood of the moment.

6



5



1



4



DOUBLE FACE

weave construction

5



2



Bonding of different layers, such as woven/woven, jersey/jersey, woven/jersey, often with a more or less thick protective material as inside layer, tending to to a neoprene look, not only for performance, but for fashion purposes.

3



6





SHINY



Metal yarns, and not only gold effects, but shimmering colours as well, remain steadily in demand. They represent a way to embellish and enrich the cloth, with a touch of metal also paired with coarse fancy yarns or unexpectedly as relief on jacquards.

WELL DEFINED OVERSIZED

Tiny motifs and micro patterns, small geo effects and minuscule classics, the main trend of the past seasons, although representing the basic part of the collection together with the solid qualities, they give place to the new opposite family : oversized, magnified both defined and undefined patterning. Monochromatic graphics often in black and white or black and colour, sometimes with a touch of lustre, sometimes softened with hairy surfaces.

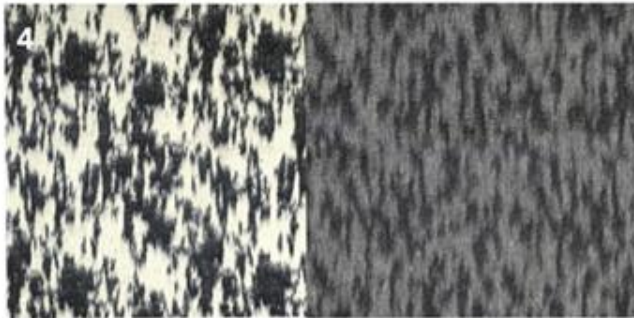


**WELL DEFINED
OVERSIZED**





**UNDEFINED
OVERSIZED**





WOMENSWEAR TRENDS Spring Summer 2018



WOMENSWEAR TRENDS
SPRING/SUMMER 2018

Home

Home

Trends

[Menswear Trends](#)

[Womenswear Trends](#)

[Shirting Trends](#)

[Milan Trending Now S/S
2017](#)

[Milan Trending Now F/W
16-17](#)

Fabrics Library

[Menswear Fabrics](#)

[Womenswear Fabrics](#)

WOMENSWEAR TRENDS SPRING/SUMMER 2018

Access all our 7 Fabric Trend Boards and 6 Colour Trend Boards for Womenswear Spring/Summer 2018.

[Purchase now](#)





WOMENSWEAR

Italtex Line

The book shows the general trend on woven womenswear: textured, fancy and plain fabrics in different fibres.

2 books 1 Year

1 book 1 Season.

DELIVERY:

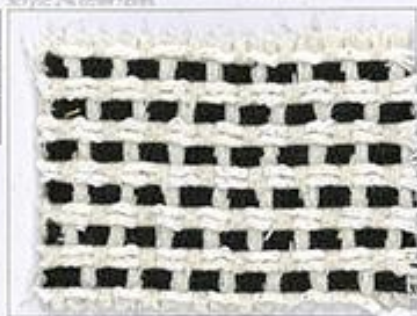
September - Summer season

February - Winter season

Italtex is the leading Italian publisher of **trend books**, for over fiftyfive years in the field of technical publication for apparel textiles. A team of professionals is working constantly to find out the most important news, to discover a new trend, before it becomes a trend, to analyse the customer's needs and the market requirements, to exchange information with fibre, yarn, fabric manufacturers. The range of publications covers men's, women's, casual wear, as well as shirting, prints and knits.

Rustic style

WS337 - 69% cotton 11% nylon 11% polyester 7% acrylic 3% other fibres

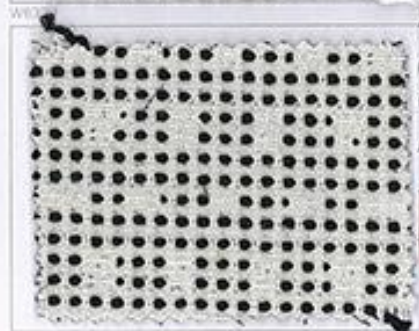


Thick and thin areas

WS332 - 65% cotton 32% viscose

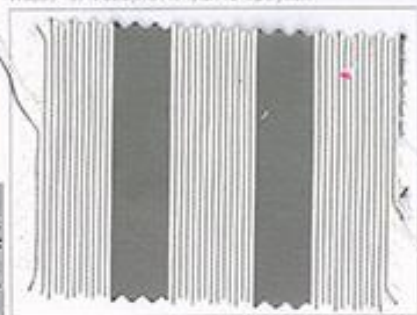


Volume EXPLORATIONS



Lustrous relief stripes

WS335 - 57% cotton 31% nylon 12% polyester



Stretch checkes

WS333 - 50% cotton 20% polyester 19% nylon 3% elastane

summer 2018

W6461 - 52% cotton 14% nylon 13% acrylic 11% polyester 6% viscose 4% other fibres



W6462



the casual...



W6464 - 55% cotton 40% nylon 5% elastane

W6463 - 74% cotton 8% acrylic 6% viscose 5% other fibres 3% linen 4% polyester



W6465 - 97% cotton 3% elastane



W6456 - 50% cotton 39% polyester 5% elastane



Geo motifs in different sizes: small all-over repeat easy effects continue to be among jacquard favourites



W6457 - 50% cotton 39% polyester 5% elastane



W6458 - 54% cotton 42% polyester 4% elastane



W6459 - 50% cotton 39% polyester 5% elastane



W6460 - 54% viscose 46% acetate





italtex

[Login](#)
[Register](#)
[Contact Us](#)

[Home](#) [Trends](#) [Fabrics Library](#) [Books](#) [Shop](#) [About Us](#) [Contacts](#)

WOMANSWEAR FABRICS

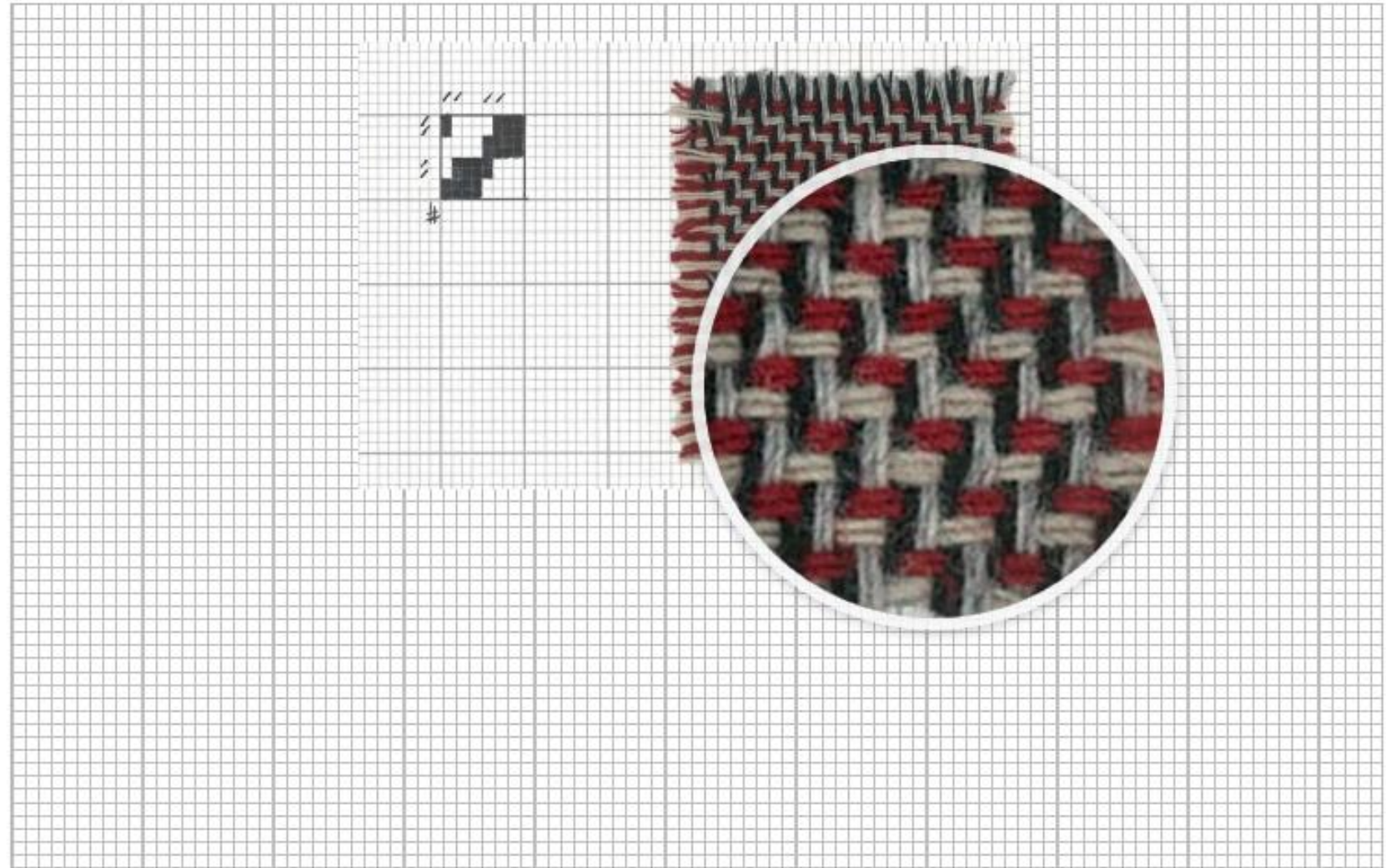
Fabrics Library



Womenswear fabrics from the **Italtex Archives**, continuously updated. Some can be downloaded, while the ones with weave and those available for shipping can be purchased. Select the ones you like and go to your

PM09166

Real sample size 10.38 x 6.88 cm



Purchase
weave

TDG01195

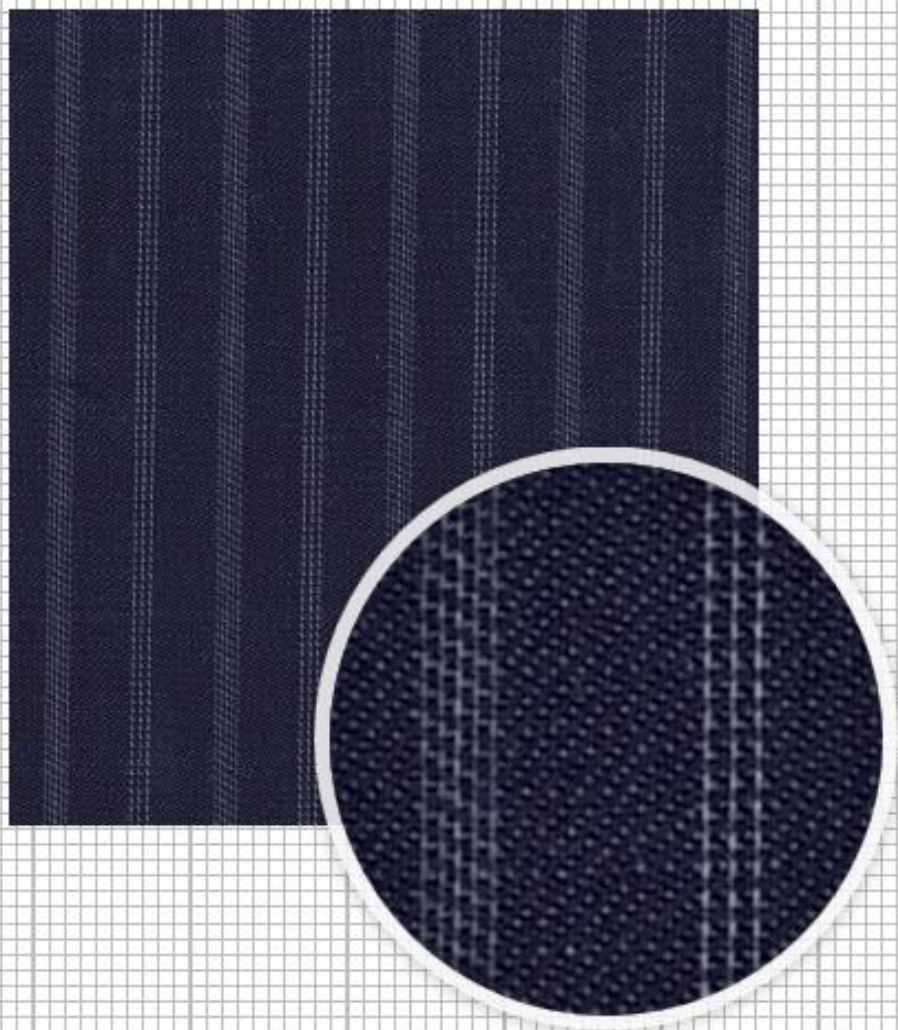
Real sample size 10.00 x 11.00 cm



Purchase swatch

TDG01310

Real sample size 9.59 x 10.43 cm



Purchase
switch

TDG08836A

Real sample size 10.00 x 11.00 cm



Purchase
switch

TDG08837A

Real sample size 10.00 x 11.00 cm



Purchase
switch

TDG08839A

Real sample size 10.00 x 11.00 cm

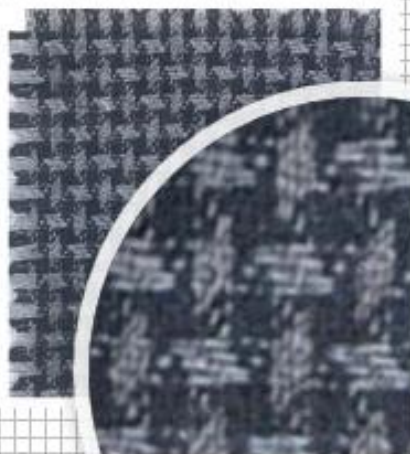
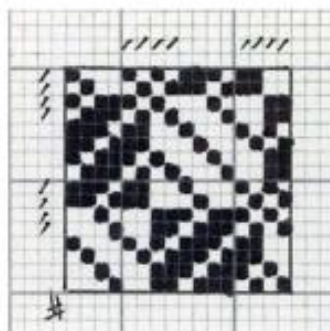


Purchase
swatch

PM07096

harness 16

Real sample size 9.76 x 5.30 cm

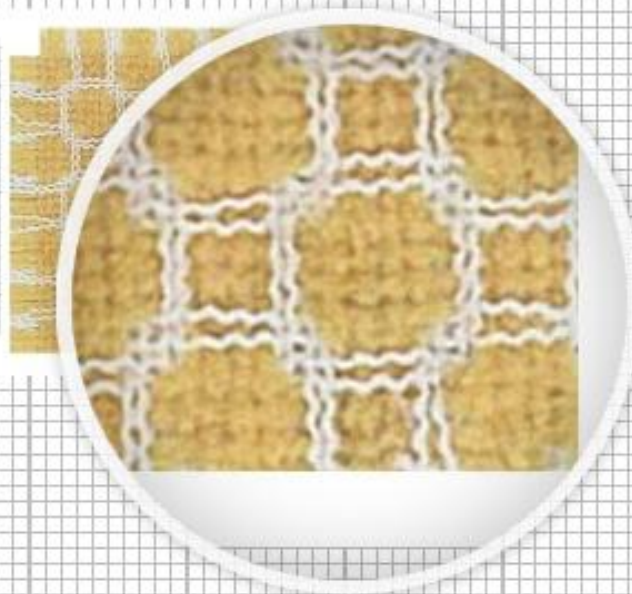
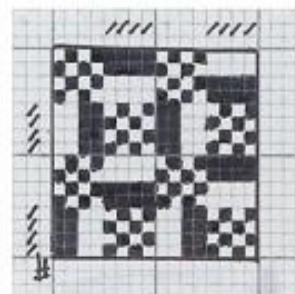


Purchase
switch

PM07432

harness 16

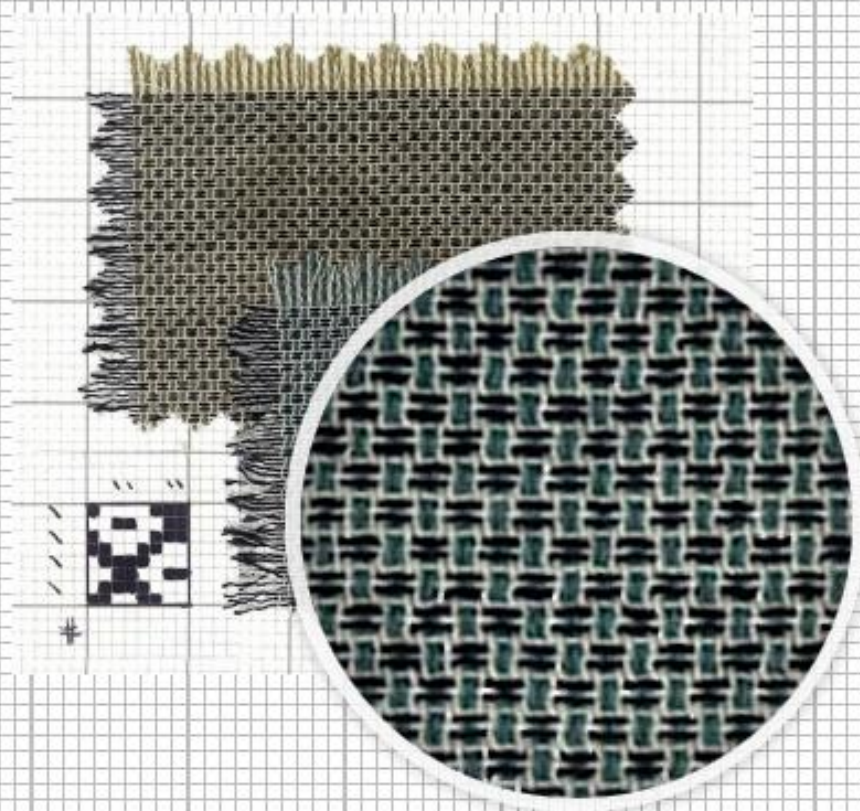
Real sample size 9.32 x 4.67 cm



Purchase
switch

PM08963

Real sample size 9.51 x 8.47 cm



Purchase
switch

3D TEXTURES

Pronounced diagonals/ zig-zag structures/ new weave techniques where the surface appears embossed/ pin-tuck effects/ structural diversity.



1.



Casual Dandy

We have said before that the merging of casual and formal is becoming more and more important. Here we see the transfer of silk technology to the sporty in a bespoke approach to casualwear featuring cravatte and foulard style jacquards and complex dobbies. A story inspired by 19th century London dandies.

1. EUROPA (I) / 2. BONOMI (I)



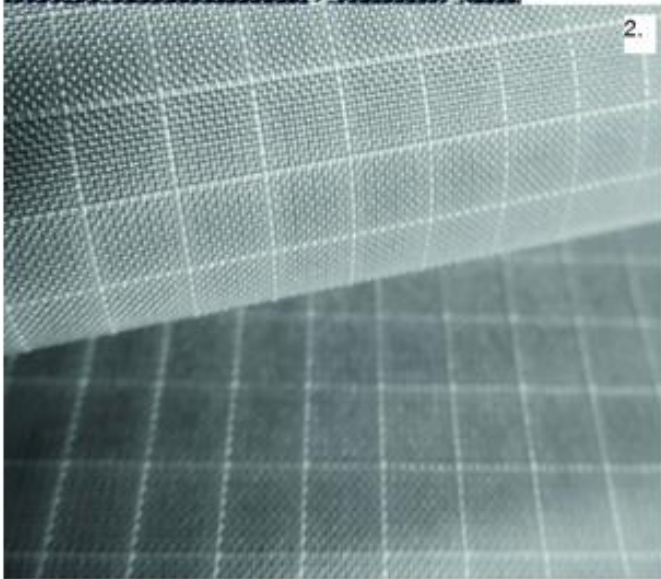
2.



1.

Utility Stripes

While marine looks are a strong feature of both men's and women's apparel, utility dressing continues in the casual sports sector, albeit with a nautical feel. Important is to mix technical fabrics with classic workwear cottons. Ticking and apron stripes look newer on bleached white grounds. Jacquards complete the story.



2.



3.



4.

1. ITALDENIM (I) / 2. MAJOCCHI (I)
3. BERTO (I) / 4. EUROPA (I)



BLUE DEVELOPMENTS

feminine denim / surface embellishments / relief & 3d effects / surface flocking / dimensional shrinking / special effects through weave play and finishing.





1. PROSPERITY (HK) / 2. CALIK (TR) / 3. SOORTY (PAK) / 4. DESERT STUDIOS (UAE)
All images taken at Denim Première Vision, AW 17/18







CRACKED LEATHER

Imperfect leather-effect coatings / bubbling, crackling finishes / surprise small-scale placements / oxblood over indigo / damaged & discoloured / dirt & tar.



BRUSHED & HAIRY

plush velvety surfaces / warm brushed backs / melange yarns / winterising classic patterns / tactile structures / wool blends.



FADE AWAY

ultra-soft handles / tencel or modal blends / ombre fading effects / mellow shading / brushed backs / dialled down contrasts/ lighter weights.



GEOMETRIC STRUCTURES

From waffle effects and mesh-like structures to strong diagonals and trompe l'œil designs, this is a look that plays with scale of design as well as yarn weights to give both optical freshness and textural interest. A key story in both shirting and trouser weights and for men as well as women.



1. I.MA.TEX (I)
2. BLUE FARM (HK)
3. CALIK (TR)

All images taken at Denim Première Vision, SS 2017



FROM BELOW

This is an evolution of the well known "destroyed" denim treatments of the past few years. Now the wefts are made from spun polyester that is similar in look and comfort to cotton but stronger so that it is not destroyed by burn-out treatments. This allows designers to manage small or large-scale devoré and "tom" or "destroyed" treatments in a much more creative way.



ALL FABRICS BY ROYO (E)

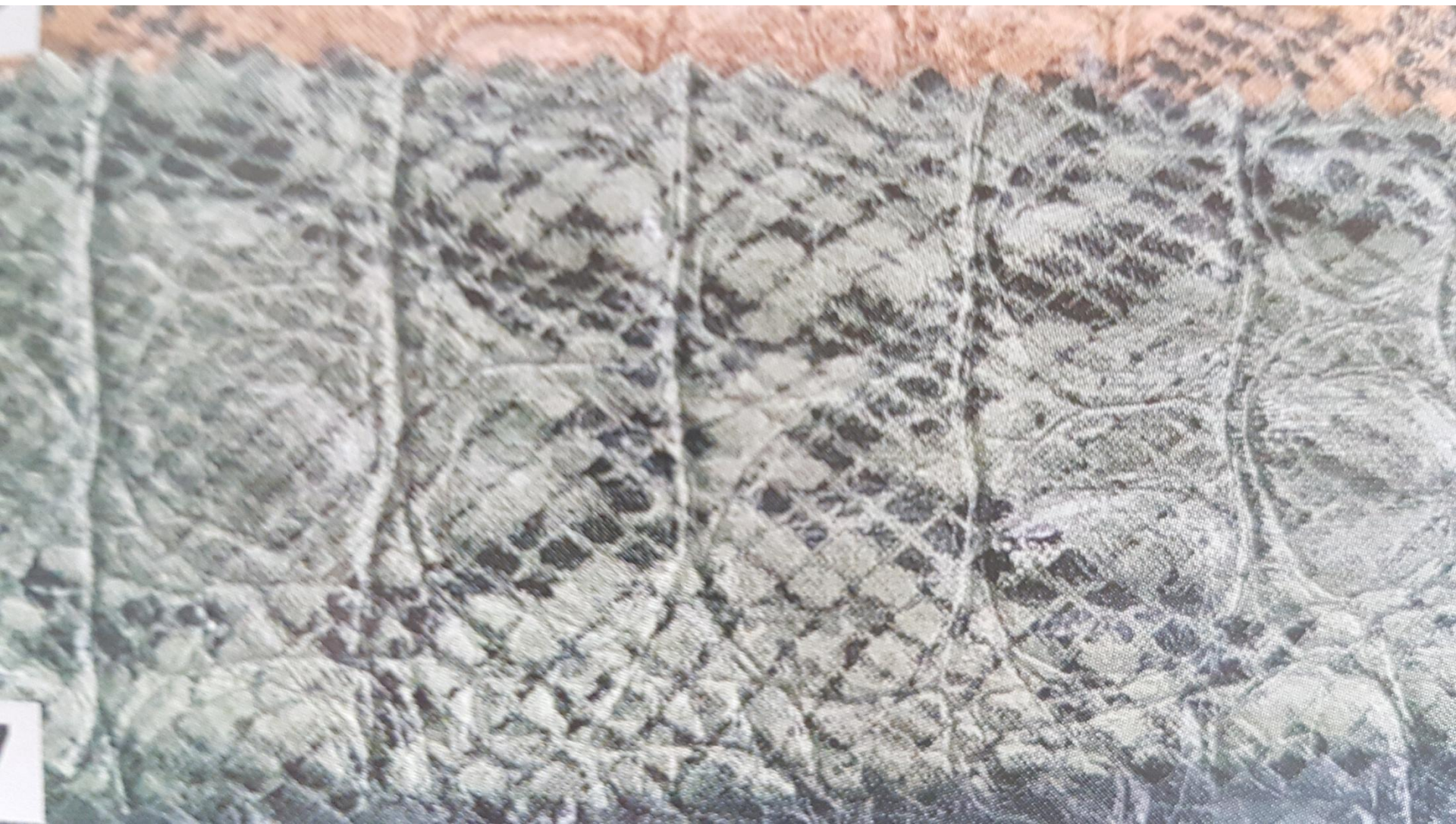


STARK CONTRASTS

Our final story highlights, again, the importance of bold colour contrasts and surface surprises this season. Created through dip-dye and tie-dye techniques, lasered colour removal or, in the simplest form, through removing pockets and un-stitching hems.

- 1. ARTISTIC FABRIC MILLS (PK)
- 2-3. A14 DENIM BY AKOZBEKLER (TR)
- 4. SOORTY (PK)

Z veletrhu Première Vision







col. 069

col. 013

col. 033

col. 057



col. 215

col. 113

col. 233

col. 133

col. 257

col. 157

col. 213

Q-22226 JACQUARD JERSEY
60%PE 25%VI 10%CO 5%EA

COLOURFUL JACQUARD JERSEY

This relaxed fabric is made of viscose, polyester, cotton and elastane. It is a voluminous supple and stretchy fabric. Jacquard jersey is a fabric that is ideal for making a skirt, sporty dress or sweater. With this catchy knit design you'll be sure to make a fashion statement.



- WASHED CHECKS**
76%VI 22%PE 2%EA
- 1 Q-22225-033
 - 2 Q-22225-069
 - 3 Q-22225-013
 - 4 Q-22225-015
 - 5 Q-22225-133
 - 6 Q-22225-169
 - 7 Q-22225-113
 - 8 Q-22225-115

WASHED CHECKS

A voluminous, loosely woven cotton twill base in a check pattern. This fabric is truly a feast for the eyes! It is woven loosely together and has undergone a washing for an ultra soft handfeel and easy manageability. With a tactile hand and a flexible drape, it is ideal for unconventional and statement-making shirts, skirts, dresses, scarves, and more!



BENGALINE TARTAN CHECKS

BENGALINE TARTAN
Q-22204
COMING SOON!

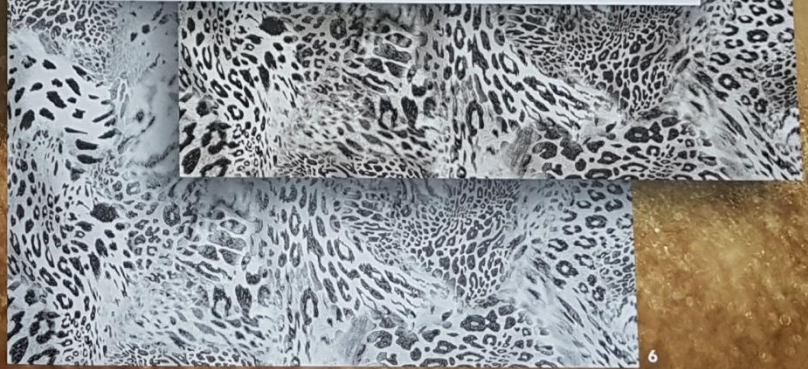
Q-22208 BENGALINE YARNDYED CHECK
76%RY 21%PA 3%SP

- 1 Q-22208-057
- 2 Q-22208-041
- 3 Q-22208-068



WARM CHECKS

ANIMAL PRINTS



FASHION CHECK
80% PE 100%VI

- 1 Q-22227 -065
- 2 Q-22227 -033
- 3 Q-22227 -057

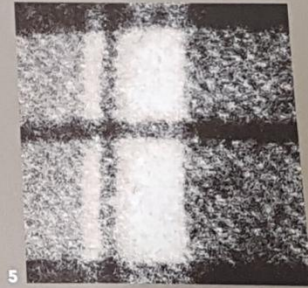
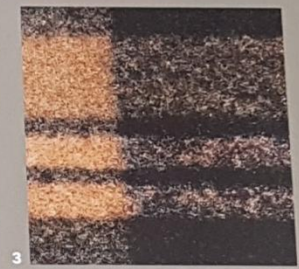
CREPE GEORGETTE
100% PE

- 4 PC-1567-053
- 5 PC-1567-055
- 6 PC-1567-068



PLAID CHECKS

These classic patterns are some of the most widely recognized fabric designs in the world. They have been popular throughout history, across cultures and continue to be staples in both fashion and interior design. The word plaid is derived from the Gaelic word Plaide, meaning blanket. Plaid checks are commonly used for coats, jackets, warm trousers and blankets.



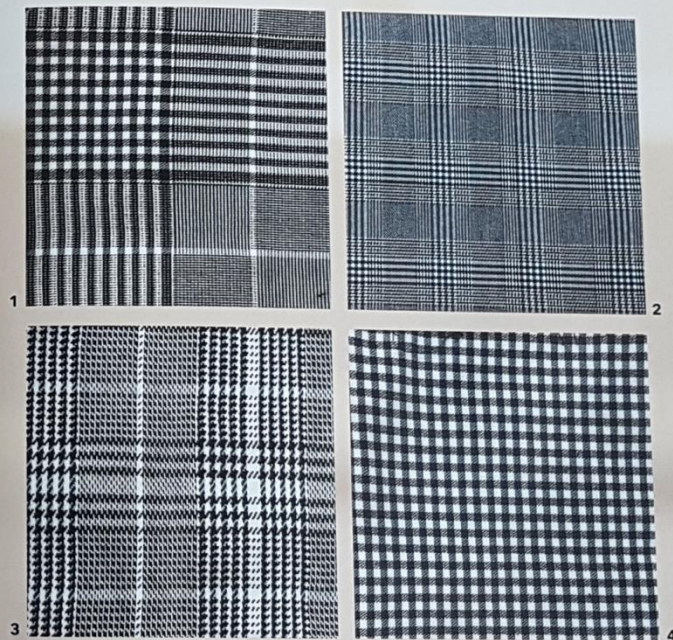
CHECKS GREENLAND
40%PE 50%PC 5%WO

- 1 Q-22212-228
- 2 Q-22212-115
- 3 Q-22212-137
- 4 Q-22212-208
- 5 Q-22212-269



Bengaline fabrics are sturdy fabrics that are ideal for pants, jackets, skirts, dresses etc. They act as firm cotton but are super-flexible and have good stretch. The fabric extends over the length of the fabric (unlike the width as most stretch fabrics do).

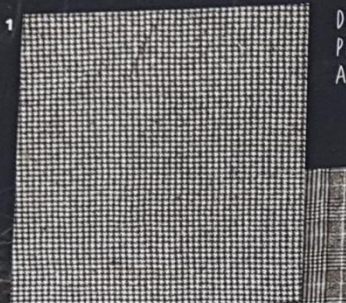
BENGALINE FORMAL CHECKS



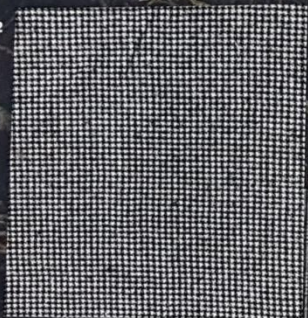
Q-22207 BENGALINE BLACK-WHITE CHECK PATTERNS

- 1 Q-22207-069
- 2 Q-22207-269
- 3 Q-22207-369
- 4 Q-22207-469

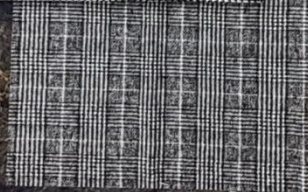
DOUBLE FACE PLAID FABRICS:
PRINCE DE GALLES
AND PIED DE POULE



1 (back)

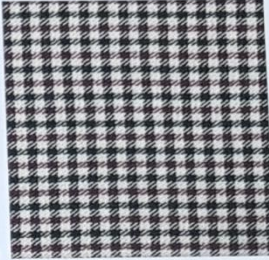


2 (back)



CHECKS GREENLAND
40%PE 50%PC 5%WO

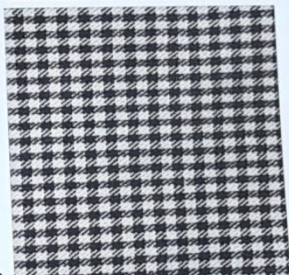
1 Q-22212-058
2 Q-22212-069



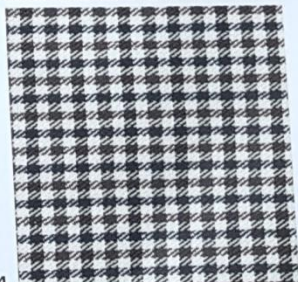
1



2



3



4

BENGALINE HIGGINS
76%RY 21%PA 3%SP

1 Q-22206-046 3 Q-22206-069
2 Q-22206-037 4 Q-22206-058

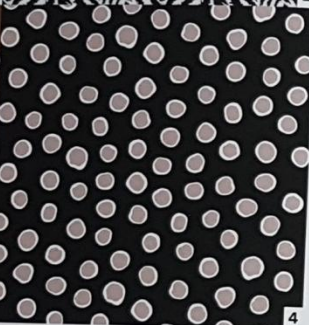


1

2



3



4



5

GRAPHIC ANIMAL PRINTS



6



7



8

- 1 PC-1586-153 CO TWILL PRINTED
- 2 PC-1586-169 CO TWILL PRINTED
- 3 PC-1570-156 CREPE GEORGETTE
- 4 PC-1570-169 CREPE GEORGETTE
- 5 PC-1570-108 CREPE GEORGETTE
- 6 PC-1591-058 VISCOSE/SP PRINT
- 7 PC-1591-069 VISCOSE/SP PRINT
- 8 Q-22195 SUEDE TWILL



VISCOSE TWILL PRINT
100%VI

- 1 PC-1578-047
- 2 PC-1578-022

CREPE GEORGETTE
100%PE

- 3 PC-1569-033
- 4 PC-1569-056
- 5 PC-1569-069



