



Nové možnosti rozvoje vzdělávání na Technické univerzitě v Liberci

Specifický cíl A2: Rozvoj v oblasti distanční výuky, online výuky a blended learning

NPO_TUL_MSMT-16598/2022



Vzorování textilií

OD INSPIRACE PO REALIZACI

Ing. Vlastimila Bergmanová



Financováno
Evropskou unií
NextGenerationEU



Národní
plán
obnovy

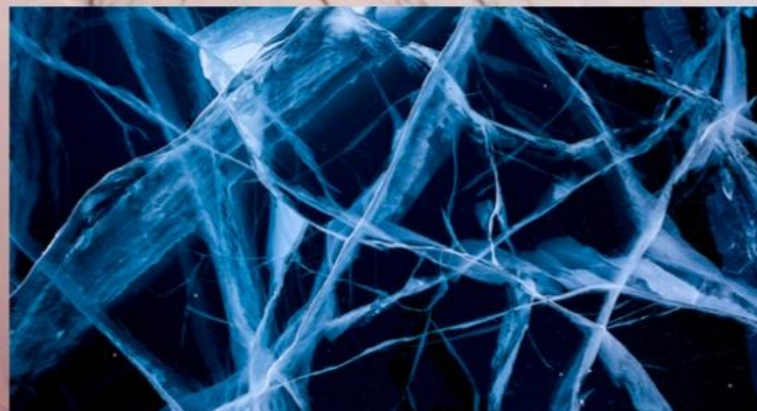
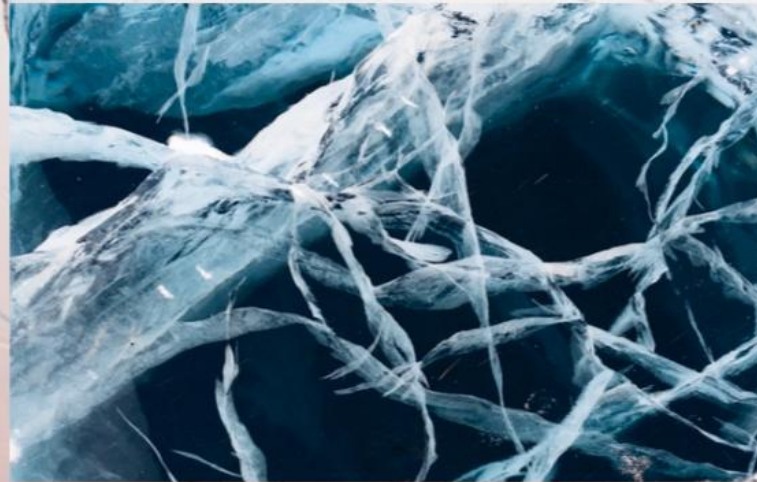
MSMT
MINISTERSTVO ŠKOLSTVÍ,
Mládeže a tělovýchovy

OD INSPIRACE PO REALIZACI



Vyučující: Ing. Vlastimila Bergmanová
vlastimila.bergmanova@tul.cz
Katedra designu, TUL, tel. 3949

INSPIRATION



VYTVOŘENÍ VLASTNÍHO NÁZORU

Vzorování textilií

Koláž vyvolávající určitý pocit, náladu a asociace, textury, materiálu, tvarů... na dané téma.



MODNÍ TRENDY

Vzorování textilií

barevnost
materiál
struktura
vzory

<https://italtextrends.com/pages/about-us>

italtex

[Login](#)
[Register](#)
[Contact Us](#)

[Home](#)

[Trends](#)

[Fabrics Library](#)

[Books](#)

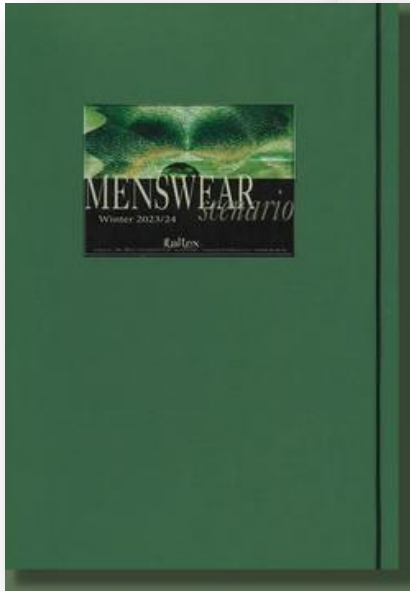
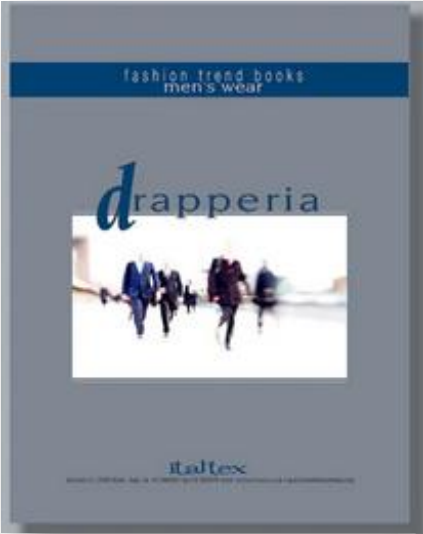
[Shop](#)

[About Us](#)

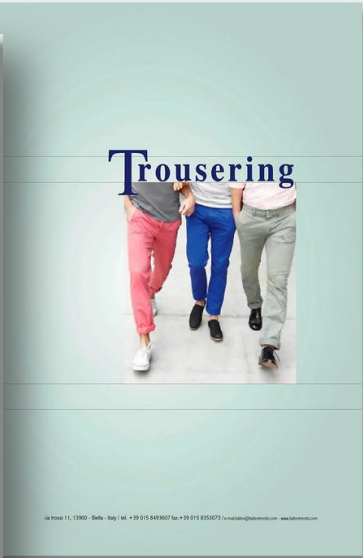
[Contacts](#)



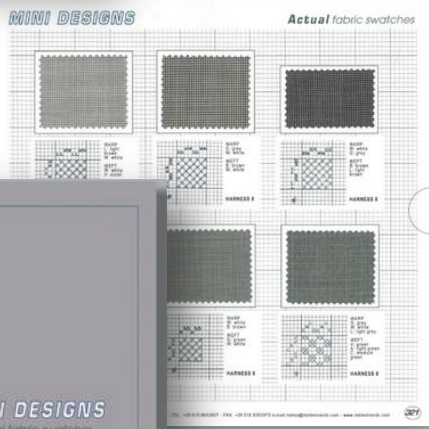
Textile patterning



Fabric trend book with actual swatches presenting the new colours, compositions, yarns, constructions, patterns and finishes for menswear jackets, trousers, suits and coats. With colour card, creative and technical suggestions. Colours are presented with Pantone® reference numbers.

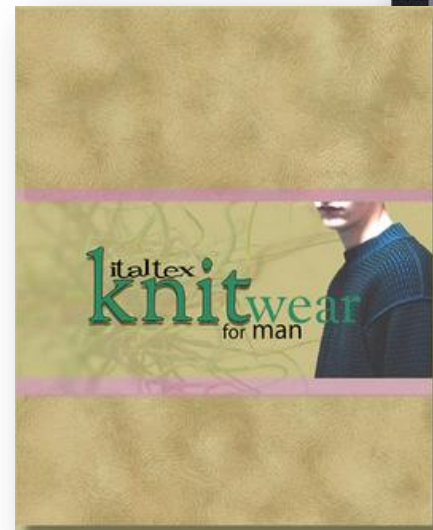
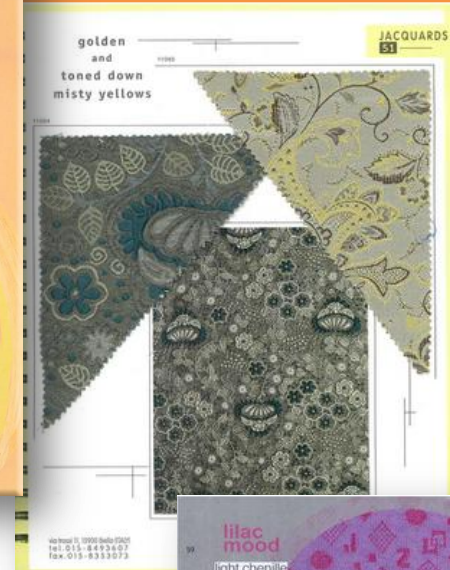
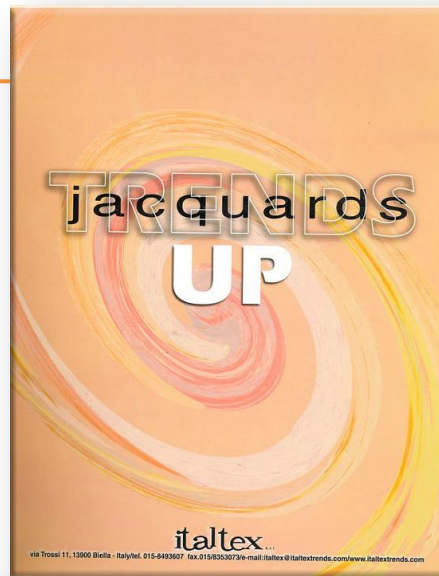
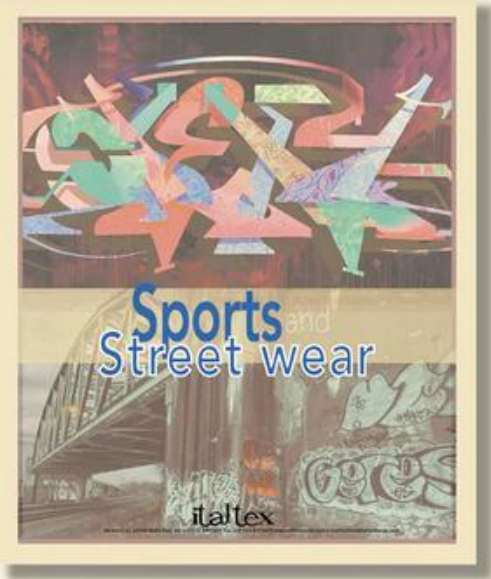


MÓDNÍ TRENDY



MÓDNÍ TRENDY

Vzorování textilií



Vzorování textilií



MÓDNÍ
TRENDY



MÓDNÍ TRENDY

118

ARTISTIC
pattern

11017 - 95% virgin wool, 5% elastan

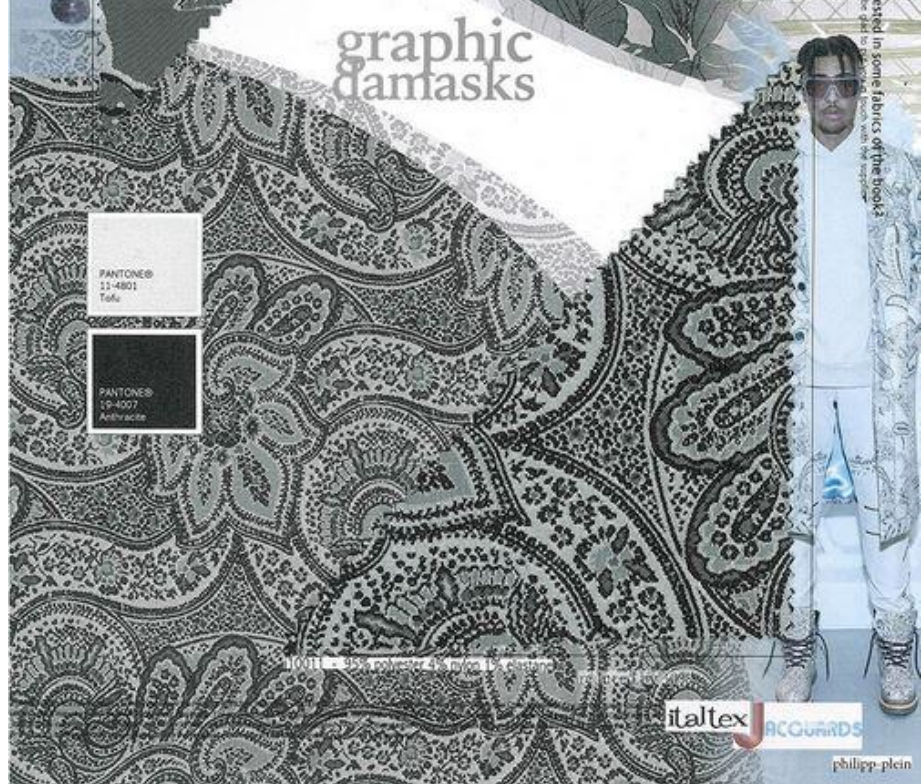


comme-des-garçon



10010 - 95% polyester, 5% micro L elastan

graphic
damasks



10111 - 95% polyester, 5% micro L elastan

italtex JACQUARDS

phillip plein

**WELL DEFINED
OVERSIZED**

5

6

MÓDNÍ TRENDY



PÁNSKÁ MÓDA

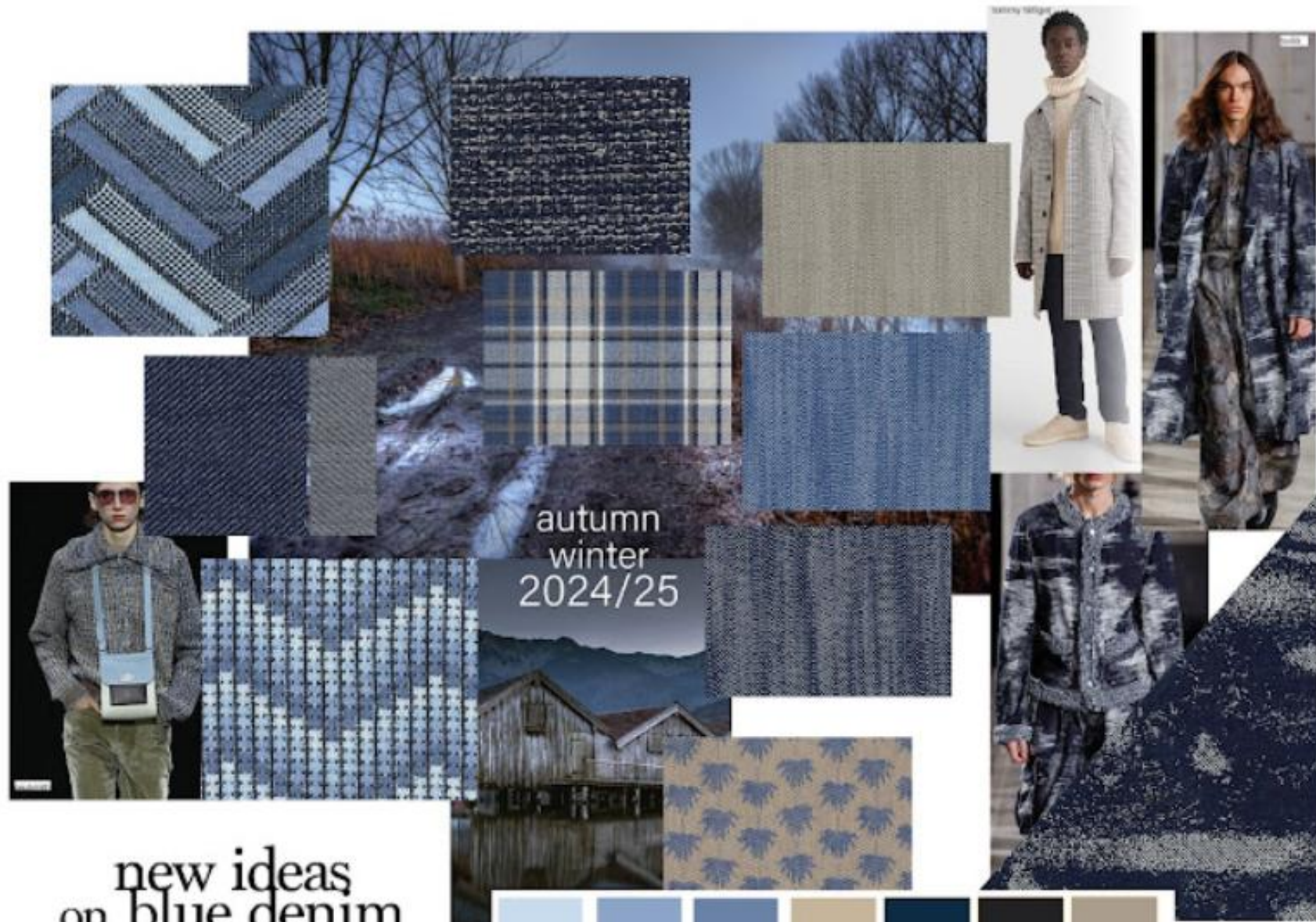
PODZIM/ZIMA 2024/25

Italtex Tendenza Colori e Tessuti Uomo AI 24/25



April 24, 2023





new ideas on blue denim



Indigo blue are the shades of an unusual intersection pattern on a tubular, while greige and blue mouliné colour a sporty cotton sweater to pair with a hopsack fabric in a small plaid pattern. New denim bases for trousering are in bold warp slubs. A randomly spotted jacquard cotton combines indigo warp and greige weft, while small vegetable motifs enrich the beige and blue cotton shirt.

italttex



sporty look

autumn
winter
2014/2015

printing on different bases

autumn winter
2024/25



This mood board shows some examples of prints on different grounds: a camouflage with painted spots on quilted effect jacquard, a textured print on light nylon canvas playing with the colours of clays, a jungle print on ripstop with a membrane on the reverse, and matching resin-gummed touch functional fabrics. On jersey, prints are inspired by classic wool checks or imitate disoriented dyeing, as is the cotton and polyester sweatshirt to pair with the functional sweatshirt with a brick red polyurethane glossy coating.

italtex



DÁMSKÁ MÓDA

PODZIM/ZIMA 2024/25

italtex

Plains colours for womenswear

AW 2024/25



LILACS & PINK





THE DARKNESS



blue interpretations

| | | | | | |
|----------------------------------|-----------------------------------|--------------------------------------|-----------------------------------|-------------------------------------|-----------------------------------|
| PANTONE® 19-4002 High Blue | PANTONE® 19-4022 Lilac Blue | PANTONE® 19-3913 Sapphire Blue | PANTONE® 19-3941 Slate Blue | PANTONE® 19-3962 Fuchsia Blue | PANTONE® 19-4031 Periwinkle |
|----------------------------------|-----------------------------------|--------------------------------------|-----------------------------------|-------------------------------------|-----------------------------------|



AW
2024/25

Winter blue matches grey in jacquard wool coats with unusual graphic motifs. Blue are the brushstrokes on the 3D-printed flowers of a knit felt. Blue matches cream and red in the macro-weave sporty tweed paired with memory-effect metallic weft denim. In knits, sophisticated blue colours shiny chenille horizontal band patterns alternating with transparencies, and the hot print engraving effects on a velvety blue.



italtex



sensual black

AW
2024/25

Rich and fascinating black in the wool embroideries on tulle net and in the lace effect see-through effects reminiscent of bustier fabrics. Aggressive black in the shiny coating on a jacquard jersey with small diamond shapes, dramatic with embossing games on light polyester jacquard and technical on shiny rylon parachute cloth softened by gauzy embroidery. The white spotted print on burnt-out fabric creates transparent bands alternating with compact satin. Very light wool/nylon jersey draws opaque, tattoo effect patterns on transparencies.

PANTONE®
19-4907
Midnight

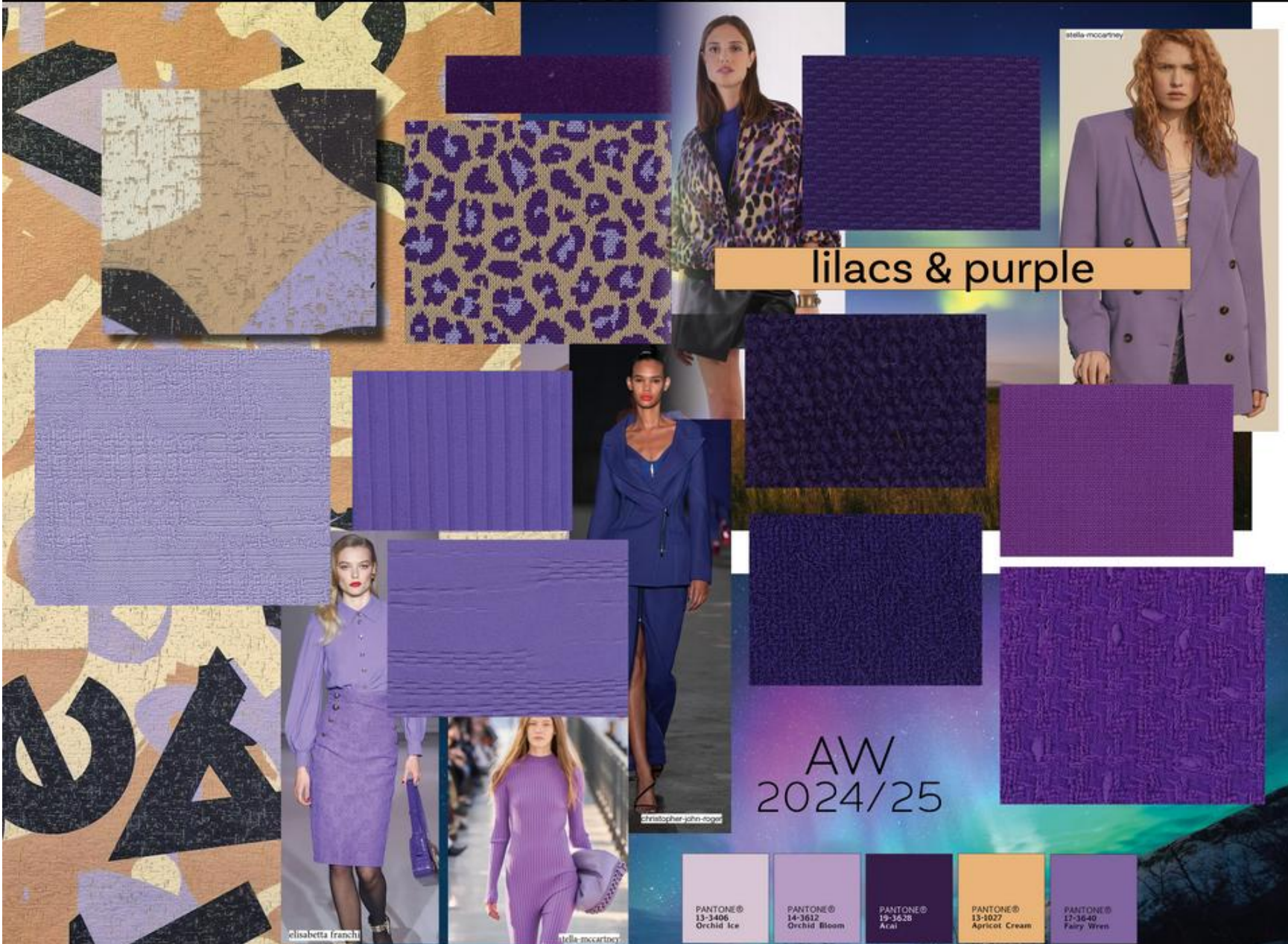
PANTONE®
19-4953
Jet Black

PANTONE®
19-2963
Black Beauty

italtex



Per informazioni sui tessuti visitate il sito www.italtex.com o il numero verde 800 20 20 20. Per le informazioni sui tessuti visitate il sito www.italtex.com o il numero verde 800 20 20 20. Per le informazioni sui tessuti visitate il sito www.italtex.com o il numero verde 800 20 20 20.



lilacs & purple

AW
2024/25

| | | | | |
|-----------------------------------|-------------------------------------|-----------------------------|--------------------------------------|-----------------------------------|
| PANTONE® 13-3406 Orchid Ice | PANTONE® 14-3612 Orchid Bloom | PANTONE® 19-3628 Aral | PANTONE® 13-1027 Apricot Cream | PANTONE® 17-3640 Fairy Wren |
|-----------------------------------|-------------------------------------|-----------------------------|--------------------------------------|-----------------------------------|

elisabetta franchi

christopher john-roger

stella mccartney

stella mccartney

A sophisticated lilac dyes a wool jacquard paired with a quilted-ground abstract print. An aggressive beige and purple spotted motif on three-layer scuba fabric with deep-purple flocked reverse is combined with bio-based stretch polyamide ribbed jersey or a purple textured knit whose polyamide comes from the rubber of used tyres - which belong to the new super technical sustainable materials. Purple variations are also in traditional-structure piece-dyed suitings and monochromatic tweeds with fancy yarns.



The PANTONE® Reference names and/or numbers are from the PANTONE FASHION + INTERIORS color system. Where applicable, PANTONE® and other Pantone trademarks are the property of Pantone, LLC. Pantone® © Pantone, LLC

DÁMSKÁ MÓDA

PODZIM/ZIMA 2023/24

intense brown



AW
23/24



Goffered effects on small jacquard stretch knits. Warm tone long-hair alpaca/wool checked coats contrast with the synthetic shine of double weft polyester knits.

italtex



The FANTONE® reference names and/or numbers are the FANTONE FASHION HOME • RETECONO color system (a component of the TRACTONE Textile Color System). The printed colors shown here are approximations, which may not match the FANTONE Color Standards. For accurate FANTONE Color Standards, refer to the fabric swatch samples provided in the current edition of the FANTONE FASHION HOME • RETECONO color guide of FANTONE FASHION • HOME publications where ever applicable. FANTONE® and other Pantone trademarks are the property of Pantone LLC. Pantone® Pantone LLC, 2019. Pantone's trademarks and copyright used with the permission of Pantone LLC under License Agreement with Italtex S.p.A.

multicolour

AW
23/24

| | | | | | |
|---|---|---|--|---|---|
|  |  |  |  |  |  |
| PANTONE 11-8603 Brilliant White | PANTONE 19-4008 Network | PANTONE 17-1360 Olive | PANTONE 20-1173 Electric Blue | PANTONE 19-3223 Cobalt Blue | PANTONE 16-6327 Greenish |



Fluo colour blends on classic black&white houndstooth imitation jacquard. Multicolour yarns decorate nocturnal tweeds and bold Mexican style prints on black. Iridescent lurex bold stripes on lightweight canvas. Digital colour sports terry cloths and very long hair chenille in jersey and polyurethane plastic lacquering.

italtex

The PANTONE reference series and/or numbers are from the PANTONE FASHION COLOR + METRICOLOR color system (a component of the PANTONE Textile Color System). The printed color sheets here are reproductions, which may not match the PANTONE Color Standards. For accurate PANTONE Color Standards, refer to the Metric color samples included in the current edition of the PANTONE FASHION COLOR + METRICOLOR color guide or PANTONE FASHION COLOR + METRICOLOR color guide or PANTONE FASHION COLOR + METRICOLOR color guide. PANTONE and other Pantone trademarks are the property of Pantone LLC. Pantone® Pantone LLC, 2014. Pantone's trademarks and copyright used with the permission of Pantone LLC under License Agreement with Italtex.

DÁMSKÁ MÓDA




JARO/LÉTO 2023



multicolour
mood



spring
summer
2023



Multicolour prints on different grounds, from heavyweight canvas to lightweight rip-stop and beachwear super-stretch knits. Transparent fil-coupé jacquard in vivid colours. Amusing childhood spirit dynamic stripes in terry knits.

warm colour clean look



spring
summer
2023

PANTONE®
11-4202 Star White

PANTONE®
14-1112 Winter Wheat

PANTONE®
18-1323 Macaron

PANTONE®
13-0519 Gray Sand

Warm tones colour cotton and recycled polyester big net-stitch knittings. Bold biscuit beige and chocolate brown large stripes on cotton and wash yarn - the yarn in traditional Japanese paper. The jacquard fabric draws delicate shiny outlines that look like embroidery.

italtex



The PantoneColor names, color numbers and the PantoneColor, ColorCheck, H&M & W&M color system are trademarks of the PantoneColor, Color Systems. The proprietary color name and color numbers, which may not match the PantoneColor Color System, are the property of PantoneColor, Color Systems. For accurate PantoneColor Color Standards, refer to the fabric swatch samples provided in the current edition of the PantoneColor Color System, H&M & W&M color guide or PantoneColor Color System, H&M & W&M color guide. Where applicable, PantoneColor and other PantoneColor trademarks are the property of PantoneColor, Color Systems. PantoneColor's trademarks and copyright are used with the permission of PantoneColor, Color Systems under License Agreement with PantoneColor.

red & royal blue

spring summer 2023

FAINTONE®
18-3762 Fuchsia

FAINTONE®
18-4148 Victoria Blue

Irregular yarns enrich the grounds of soft knit jackets in traditional men's patterns.
Metallic touches feature sophisticated tweeds in the well-proven red/royal blue colour combination and illuminate coloured dots on a light transparent check. The indigo knit with bleach splash patterns is noteworthy.



italtex

spring
summer
2023

positive or
negative



The theme of opposites moves around stark navy blue/ivory and black/ivory contrasts. It finds expression in corroded checks in polyester/nylon mixtures on double-face jacquard damask, clean edge discharge printing on young-taste cotton shirts and floral prints on fluid viscose t-shirts, refined cotton/polyester shirts.



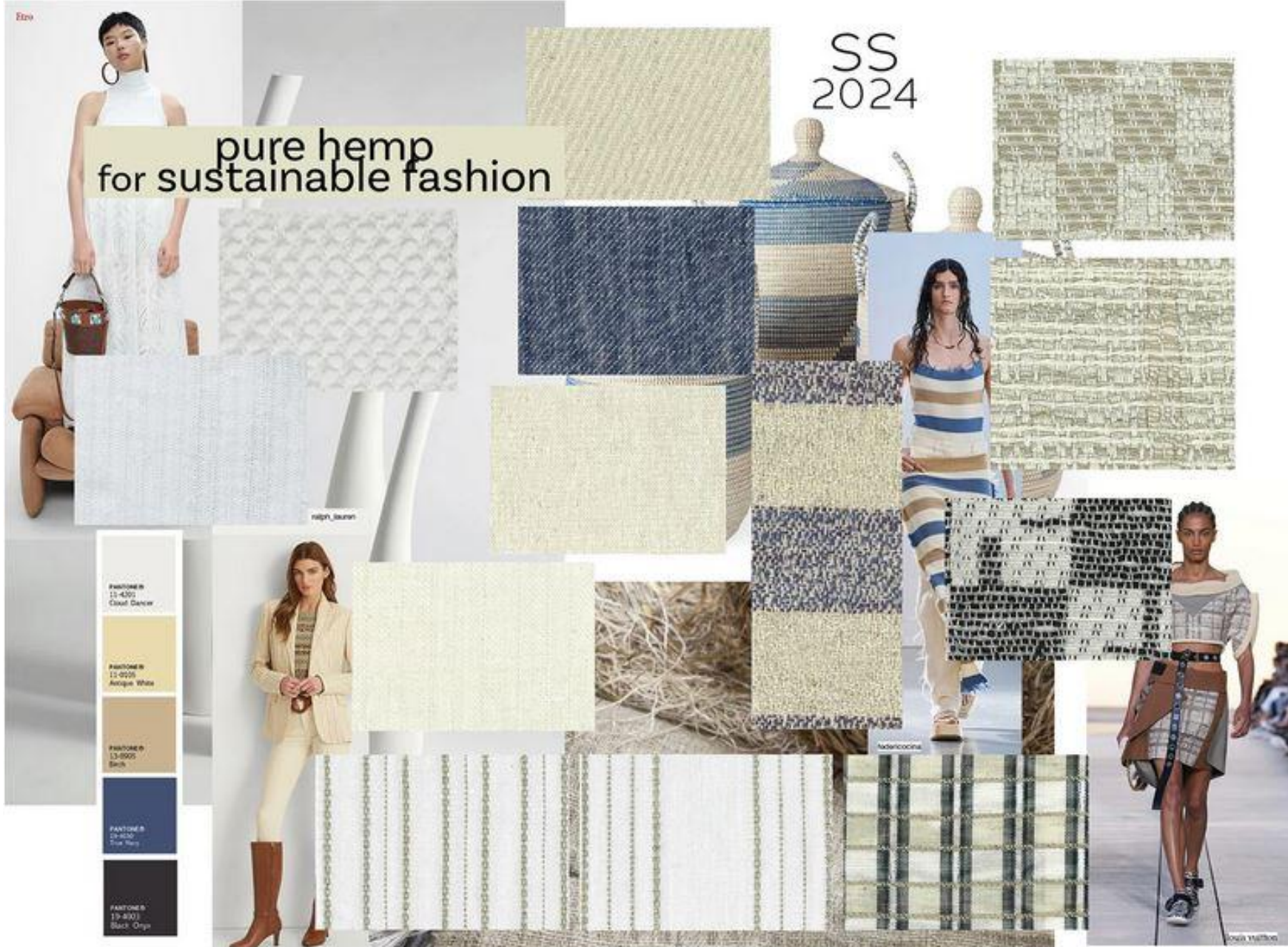
The PANTONE® trademarks appear and/or numbers are from the PANTONE FASHION COLOR GUIDE. PANTONE® color systems are a trademark of the PANTONE Color System, Inc. The printed colors shown here are approximations, which may vary from the colors of the PANTONE FASHION COLOR GUIDE. PANTONE FASHION COLOR GUIDE is a trademark of PANTONE Color System, Inc. PANTONE and other Pantone trademarks are the property of Pantone LLC. Pantone © Pantone LLC 2022

DÁMSKÁ MÓDA

JARO/LÉTO 2024

SS
2024

pure hemp
for sustainable fashion



Hemp can be considered a naturally sustainable material thanks to its low impact on the environment and the limited water consumption necessary for its transformation into a yarn. It is beneficial to the soil, 100% biodegradable and healthy on the skin thanks to its antibacterial, antiallergic, and sun-protective qualities. In this mood board are examples of pure hemp knittings, light fabrics where it blends with cotton, viscose and kapok in textured decorations and heavier jacquard stitches made with coarse yarns for a rustic effect. Noteworthy is the denim version with indigo.

italtEX

SS
2024

blue & white
for office



11-4302
Canvas Cream

12-0822
Golden Piece

19-4024
Dress Blue

Classic blue and white in different techniques: a paisley print on crinkled-finish cotton, checks on cotton/linen basket weave for jackets, textured chenille stripes and honeycomb bundles on satin. Vintage taste tubular jacquard tiny flowers in viscose crepe match geometric motifs for stretch suits. Textured fancy stretch nylon knits in deep blue and basic cotton with easy patterns like the shaded check highlighted by a knotted yarn.

italtex

SS
2024

metallic reflections
on light colours



stine girls



Gold and silver or coloured foils - what matters is to shine. Emerald green reptile skin prints on candid denim and blurred bronze flowers on peach pink jacquards. Metallic foils on rustic linen/cotton structures or light shirt-weight organza. Laminated silver prints even on light knit bases for leggings and beach wear. Insertions of iridescent lamé on jacquard stretch trousers.



italtex

The Pantone® Reference color and/or numbers are from the Pantone® Color Guide, 1340C & 1340D (2019) color system (a composition of the Pantone® Color Library System). The printed colors shown here are approximations, which may not match the Pantone® Color Standards, the accurate Pantone® Color Standards, refer to the fabric swatch samples provided in the current edition of the Pantone® Color Guide, 1340C & 1340D, or the Pantone® Color Guide of the Pantone® Color System, 1340C & 1340D, under similar conditions. Pantone® and other Pantone trademarks are the property of Pantone LLC. Pantone® (Pantone LLC), 2019. Pantone's trademarks and copyrights used with the permission of Pantone LLC under license agreement with Italtex SpA.

DÁMSKÁ MÓDA

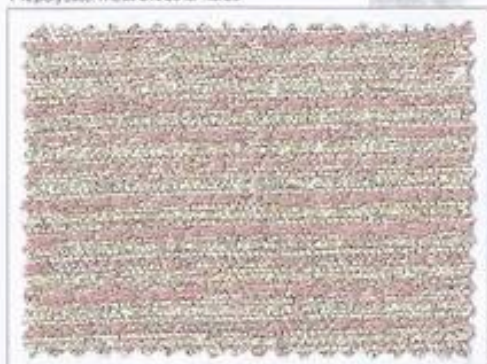
JARO/LÉTO 2025



WOMENSWEAR
Summer 2025

italtex

W6456 - 45% cotton 31% polyester 14% viscose
7% polyester metal 3% other fibres



Pinkish renditions with laminated glints

W6457 - 100% linen

pink coating



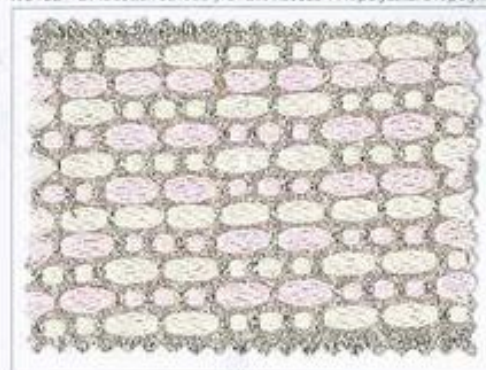
sandy bang



W6459 - 34% cotton 29% acrylic 7% polyester 11% viscose



W6458 - 37% cotton 32% acrylic 12% viscose 11% polyester 3% polyamide



W6460 - 100% linen



PANTONE®
11-0700
Lucent White

PANTONE®
12-2906
Barely Pink

PANTONE®
13-2800
Pink Tulle

PANTONE®
13-4404
Ice Flow

30446 - 100% cotton



warp knitting
for big
cotton yarns



30447 - 100% cotton



30448 - 31% cotton, 68% polyester, 1% other fibres



PANTONE®
13-0706
Luxury White

PANTONE®
17-3956
Red Coral

PANTONE®
14-0602
Pumice Stone

PANTONE®
15-1354
Sepia Red

PANTONE®
19-1409
Onyx Cafe

knitwear

WOMAN

italtex

30448 - 57% viscose, 39% nylon, 4% elastane



PANTONE®
11-0608
Coconut Milk

PANTONE®
14-1208
Ivory Cream

PANTONE®
16-1330
Mixed Clay

PANTONE®
10-1406
Atmosphere

42

delicate
shades



elisabetta franchi

slubby yarns

30449 - 89% viscose, 9% nylon, 2% elastane



30450 - 53% nylon, 43% viscose, 4% elastane



shantung effects

knitwear

WOMAN

italtex

35

30426 - 76% cotton 21% polyester 3% nylon



34172 - 100% viscose 17% nylon 3% elastane



khaito



fabrics by mam

30040 - 16% viscose 22% polyester 9% nylon 2% elastane



Interested in some fabrics of the book?
We'll be glad to put you in touch with the supplier.

knitwear

WOMAN

italtex

goffered jacquard

30031 - 56% polyester 35% cotton 8% nylon 2% elastane



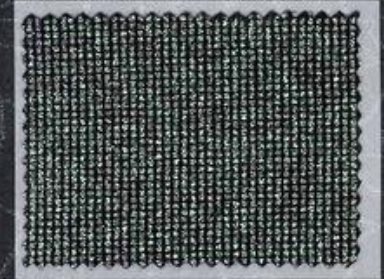
philosophyofdesign/roscrafini



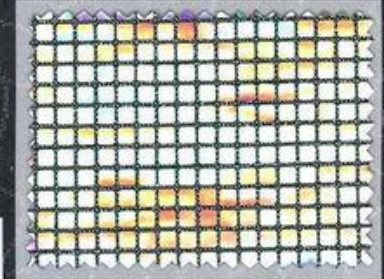
Interested in some fabrics of the book?
We'll be glad to put you in touch with the supplier.

glitters

30337 - 75% viscose 5% 14% nylon 2% polyester



30333 - 97% nylon 7% metal 5% elastane



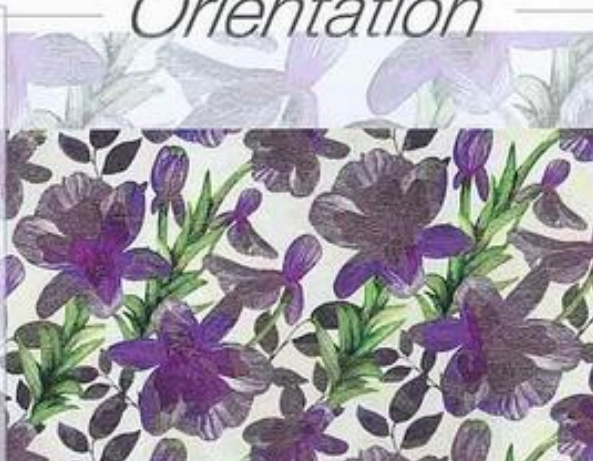
applied mirrors



knitwear

italtex

Orientation



PANTONE®
11-0608
Coconut Milk

PANTONE®
13-5114
Ice Green

PANTONE®
16-6444
Poison Green

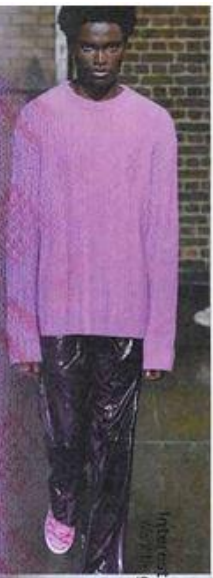
PANTONE®
15-0544
Grenoble Green

PANTONE®
19-3638
Tillandsia Purple

lilac mood

light chenille

20491 - 80% nylon 16% elastane 4% polyester



Interested in some fabrics of the book? We'd be glad to put you in touch with the supplier.



000000



000000 0000 0000 00000000



knitwear

italtex

recycled polyamide

30385 - 73% polyamide (Q-nova®) 14% nylon 13% elastane

stella-mccartney



Interested in some fabrics of the book? We'd be glad to put you in touch with the supplier.



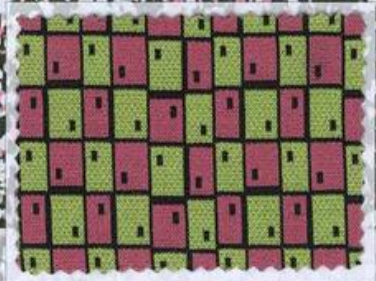
01188 - 97% viscose 7% nylon 6% elastane



01387 - 90% nylon 10% elastane



01388 - 96% nylon 4% elastane



knitwear

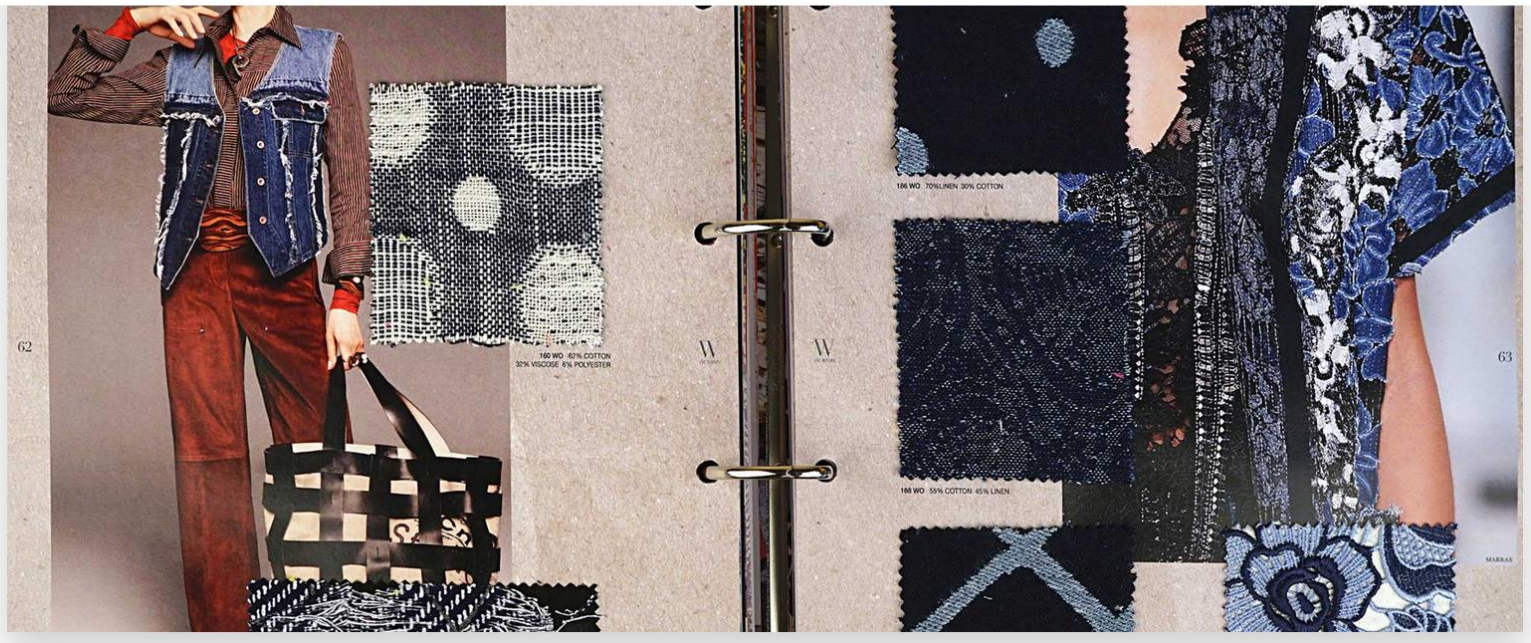
WOMAN

italtex

INSPIRACE

ALBERTO&ROY
FASHION PUBLISHERS SINCE 1951
ITALY

[Home](#) [About](#) [Trend Books](#) [Menswear Materials](#) [Textile Archive](#) [Textile Café](#) [Shop](#) [Contact](#) [My account](#)



INSPIRACE V TISKU

časopisy, odborné publikace, firemní prospekty...



WARM CHECKS

ANIMAL PRINTS



FASHION CHECK
80% PE 100%VI

- 1 Q-22227 -065
- 2 Q-22227 -033
- 3 Q-22227 -057

CREPE GEORGETTE
100% PE

- 4 PC-1567-053
- 5 PC-1567-055
- 6 PC-1567-068



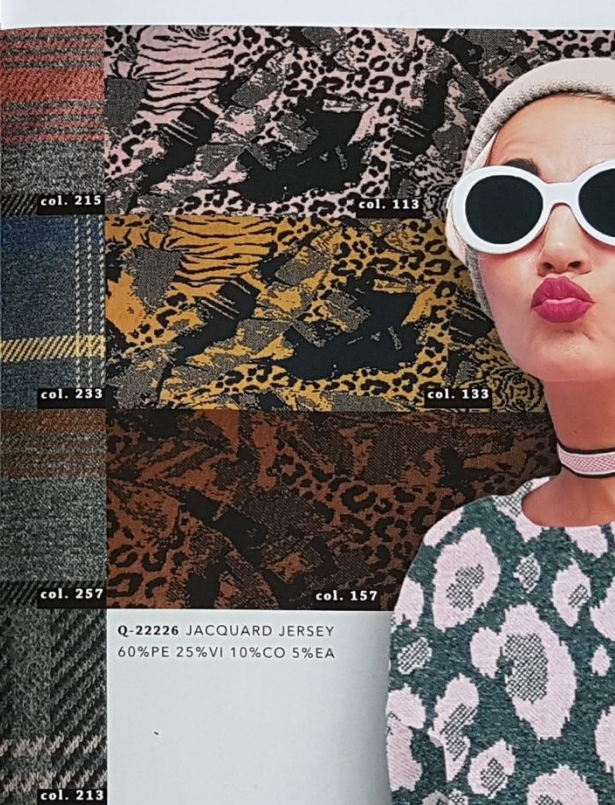
VISCOSE TWILL PRINT
100%VI

- 1 PC-1578-047
- 2 PC-1578-022

CREPE GEORGETTE
100%PE

- 3 PC-1569-033
- 4 PC-1569-056
- 5 PC-1569-069





Q-22226 JACQUARD JERSEY
60%PE 25%VI 10%CO 5%EA

COLOURFUL JACQUARD JERSEY

This relaxed fabric is made of viscose, polyester, cotton and elastane. It is a voluminous supple and stretchy fabric. Jacquard jersey is a fabric that is ideal for making a skirt, sporty dress or sweater. With this catchy knit design you'll be sure to make a fashion statement.

VZOROVÁNÍ TEXTILIÍ

Specifické požadavky na vzorování:

- estetická úroveň (neustálé módní změny)
- technické parametry (šíře, hmotnost, pružnost, tažnost, hustota (dostavy), pevnost po osnově a útku, plošná hmotnost)

Tvorba desénu:

- základem je nápad, s konkrétním požadavkem může přijít i zákazník, nápad lze použít i za několik let (umění přijít se správnou myšlenkou ve správný čas)
- možnosti výroby podniku (strojní vybavení, technologie)
- volba materiálu (100% nebo směsi, jiný materiál v osnově a útku, příze jednoduchá nebo skaná či kablovaná)
- raport – opakování dané střídy v určitém prostoru
- motiv – vzor, který raportujeme, podléhá módě

PŘÍPRAVA KOLEKCÍ

Výrobek:

- druh (sortiment)
- desén
- barevné varianty (kolority)

Kolekce:

- oděvní kolekce 2x do roka (jaro-léto, podzim-zima), bytový textil a automobilový průmysl 1x do roka
- standardní kolekce (uniformy, sport, podkladové textilie pro tisk...)

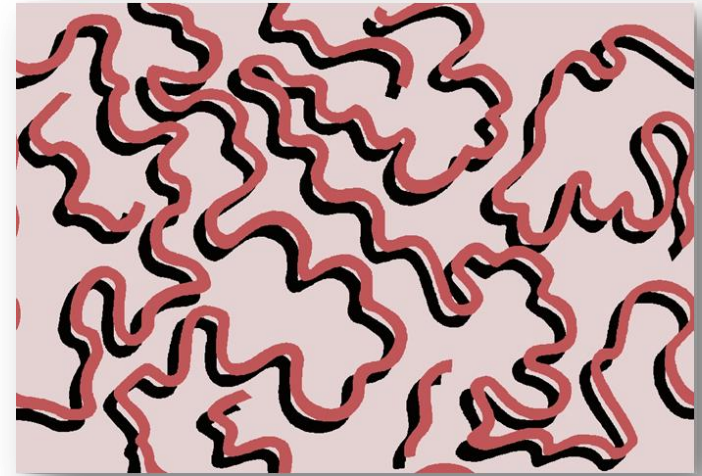
Tvorba kolekcí:

- inspirace – výstavy, veletrhy, barevnice, literatura, historie (móda se vrací, návaznost na minulou sezónu)
- vytvoření představy o tom, co se bude na danou sezónu vyrábět
- barevnost – spolupráce s chemickým průmyslem, s firmami vyrábějícími příze, příprava sezónní přízové barevnice...
- příprava návrhů – idea, kresba, skica ve skutečné velikosti, někdy stačí černobíle, dnes využití počítače
- tvorba vzorků (nenahradí počítače) – zkoušky materiálové, vazební, barevné
- tvorba kuponů včetně úpravy – délka 30–50 m, ověření vlastností, správnosti výrobního předpisu, schválení výrobku
- vytvoření kolekcí tkanin, prezentace na kartách, závěsné kolekce (ve hřbetu)
- kontrakty (umění prodat, je-li zákazník, můžeme vyrábět)

Výrobní dokumentace:

- spolupráce desinatéra a technologa (výrobní předpis a technologie výroby)
- tvorba cen (podstatnou část ceny tvoří surovina)
- archív výrobkový i technologický – obvykle číselné značení

INSPIRATION



Semestrální práce - Zuzana Burianová



REALIZATION IN THREE TECHNOLOGIES



Potištěná
tkanina



Žakárská
pletenina

Jednoduchá žakárská tkanina

REALIZACE



Tištěný desén – přenosový tisk na polyesterovou tkaninu v plátňové vazbě

REALIZACE



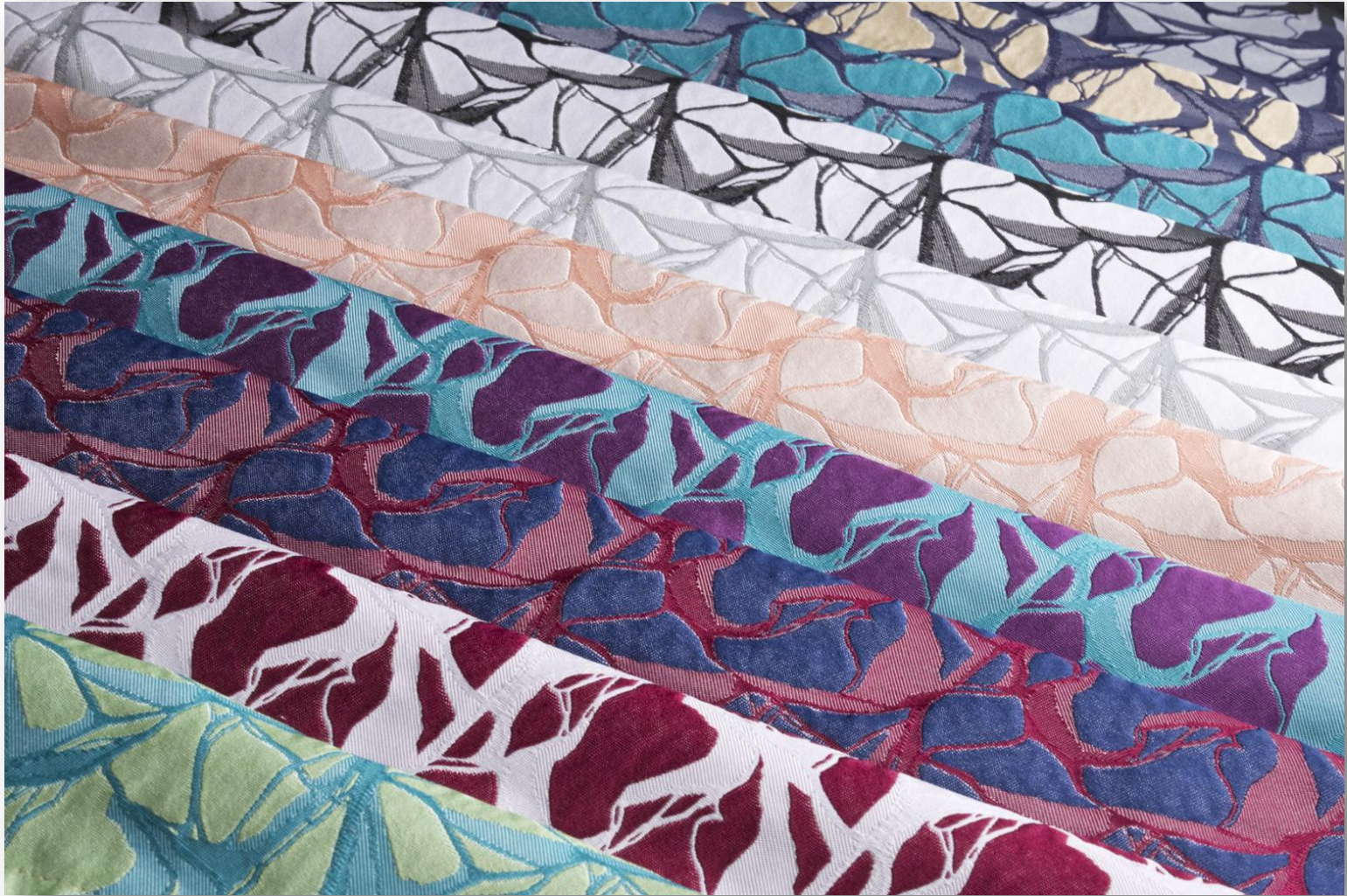
Žakárská zátažná oboulicí pletenina, podkládaná vazba s keprovým rubem

REALIZATION



Dvouútkové žakárské tkaniny, část kolekce – BP Anna Mariánková

REALIZATION



Dvouútkové žakárské tkaniny – barevné variace

INOVACE

Inovace

- pozitivně působící technické a organizační změny způsobené aktivní činností lidského činitele (technolog a desinatér)
- vyhovění trhu
- investice (do strojního zařízení...) Nic nesmí být na úkor kvality výrobku.

Etapy inovace:

- ověřování výrobku
- rozšíření výrobku a jeho uplatnění na trhu
- výrobek je vytlačován z trhu

INOVACE

BLUE DEVELOPMENTS

feminine denim / surface embellishments / relief & 3d effects / surface flocking /dimensional shrinking / special effects through weave play and finishing.

Textile patterning

FROM BELOW

This is an evolution of the well known "destroyed" denim treatments of the past few years. Now the wefts are made from spun polyester that is similar in look and comfort to cotton but stronger so that it is not destroyed by burn-out treatments. This allows designers to manage small or large-scale devoré and "tom" or "destroyed" treatments in a much more creative way.



Poznámka: ilustrační obrázky

OD INSPIRACE K REALIZACI



Obrázky a fotografie:

Italtex, Alberto&Roy
ilustrační fotografie web
studentské práce KDE
archiv V. Bergmanová