



12

# 1.3 BLACK MAGIC WOMAN



Text und Musik: Peter Green

Musical score for "Black Magic Woman" in 4/4 time, featuring guitar chords and lyrics.

**Chords:** Dm, Gm<sup>(7)</sup>, Am

**Lyrics:**  
 Got a Black Ma-gic  
 Wo-man, got a Black Ma-gic Wo-man, I've got a  
 Black Ma-gic Wo-man, got me so blind I can't see  
 that she's a Black Ma-gic Wo-man, she's try-in' to make a de-vil out of  
 me. Got a Black Ma-gic me.

**Performance Notes:** Rh. on, 4, 2 1, 3, 2, 4, 3, 1 2, 1. Dm, 2. Dm

© 1968 by Boume Ltd. London, MELODIE DER WELT, J. Michel KG, Musikverlag, Frankfurt/Main, für Deutschland, Österreich, Schweiz, Tschechische Republik und Slovakei. Abdruck erfolgt mit freundlicher Genehmigung von MELODIE DER WELT, J. Michel KG, Musikverlag, Frankfurt/Main

Voice:

Style:

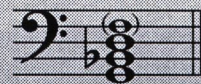
Tempo:



News



G B<sup>b</sup> d (f)



III. 30.h. (7) 5.6.03