

Nové možnosti rozvoje vzdělávání na Technické univerzitě v Liberci

Specifický cíl A2: Rozvoj v oblasti distanční výuky, online výuky a blended
learning

NPO_TUL_MSMT-16598/2022



Grafika pro navrhování textilu a oděvu

Prezentace k přednášce - technické nákresy

MgA. Miroslava Focke

From artisanal to commercial, lingerie is divided into three categories. **Sleepwear** with robes, pyjamas, after-bath terries, and loungewear. **Daywear** consists of basic underwear: panties, bras, camisoles and body shapers. Corsets, basques, petticoats and other mostly structural items commonly worn under bridal and special occasion dresses are called **Foundations**.



pyjama top
pull-on pants

camisole

boxer shorts

negligee
set

panty
shaper

bodysuit
shaper

A balanced collection should be well merchandised and include not only a large selection of various items, but offer choices from all lingerie categories.

leg
smoother

robes and
peignoirs

corset

chemise

bustier

tank
top

underwire
bra

waist cincher

corselet

merry
widow

panties
briefs

girdle

bikini

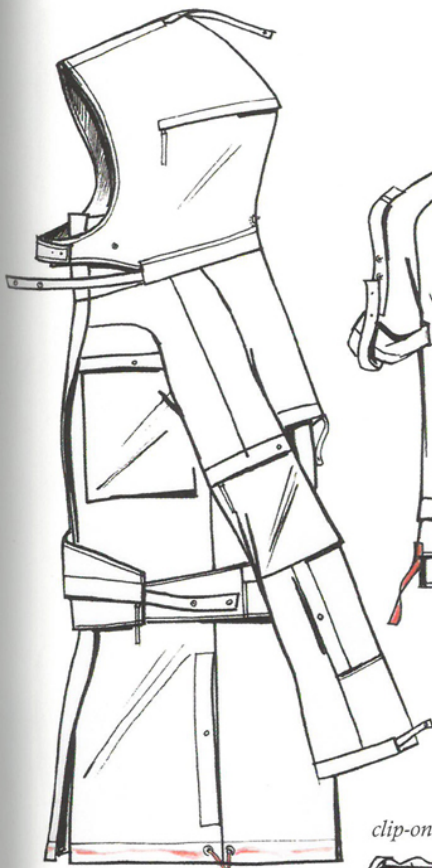
teddy

garter belt

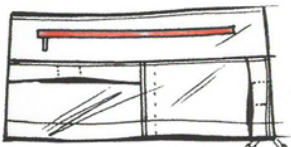
petticoats and
crinolines

ANNA KIPER

Vibrant red drawstring cords, Velcro fastenings and mesh inserts are the bright accents to a white and reflective-silver colour story, peeking through sheer parachute nylons and semi-transparent rip-stops. Strong focus on details, functions and elements are clearly communicated through flat sketches and technical diagrams.



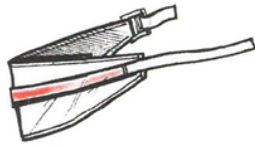
complex pocket system



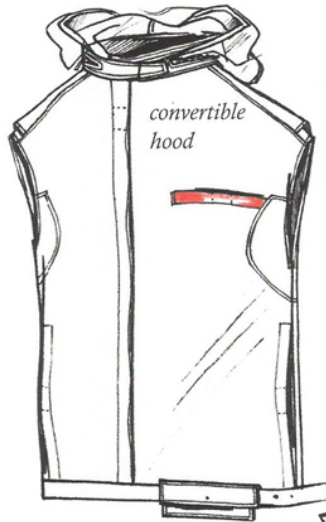
detachable yoke



zip-off belt-bag

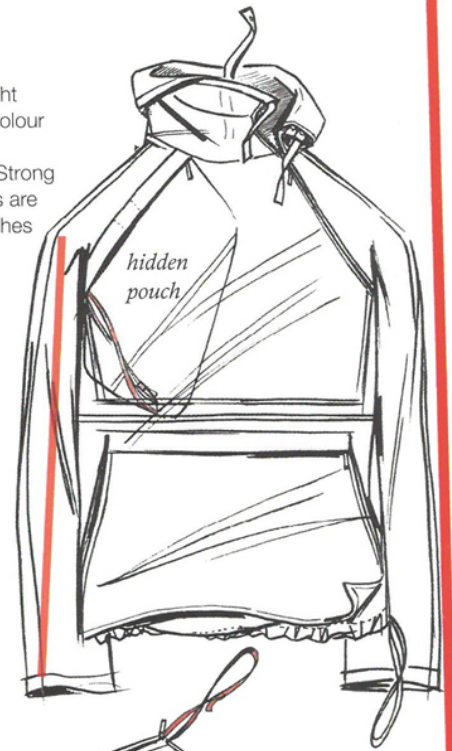


clip-on waist adjuster



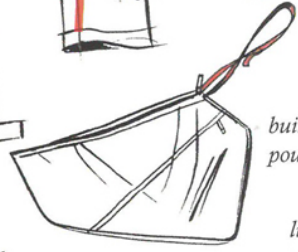
convertible hood

sliding compartment

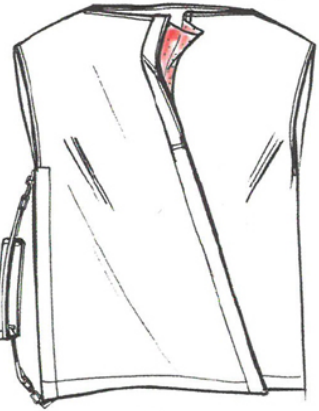


hidden pouch

built-in pouch



luggage-strap waist band



perforated paper insert

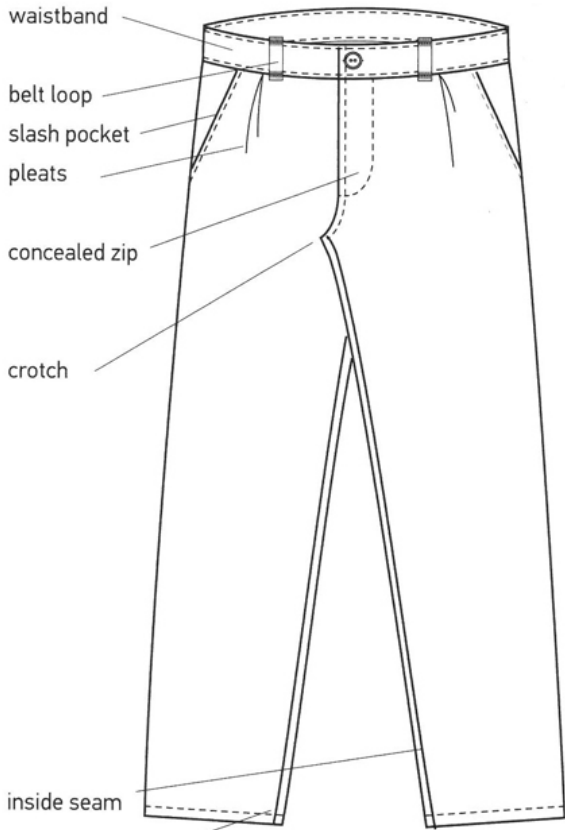


key-chain bag

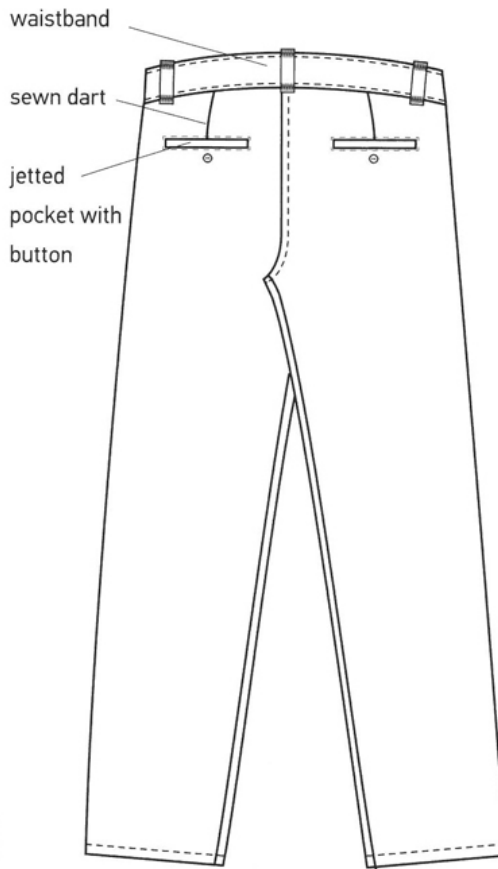


safety buckle

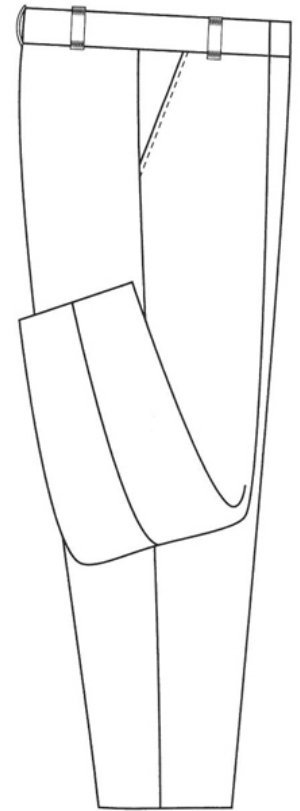
skirt reversible into a pouch



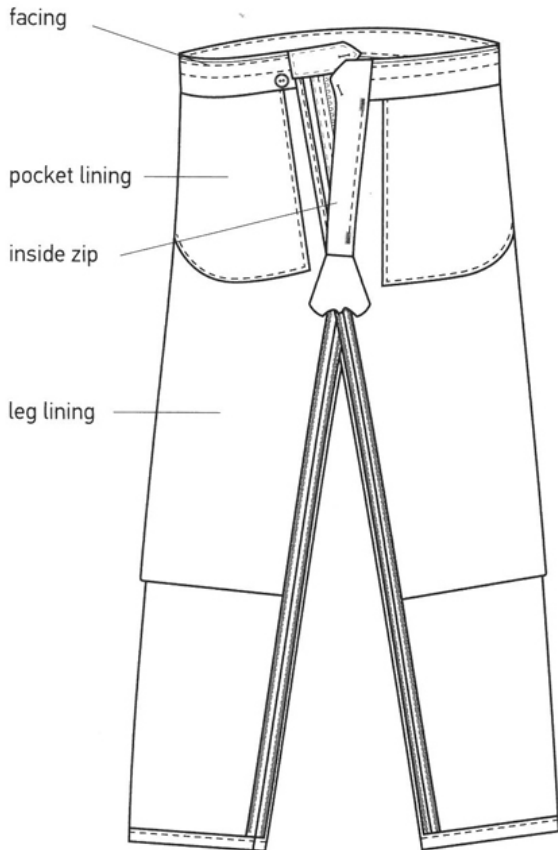
front



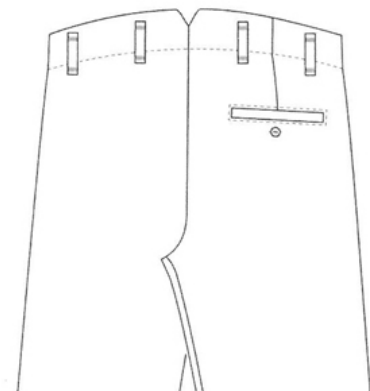
back



profile showing inside seam



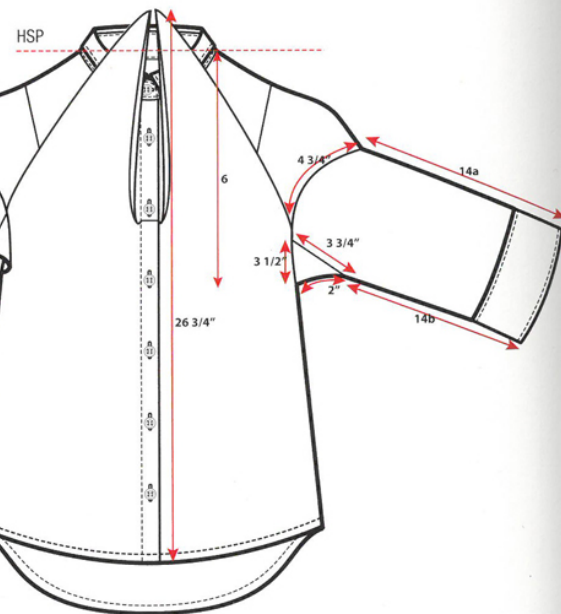
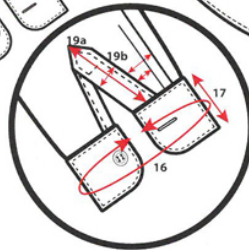
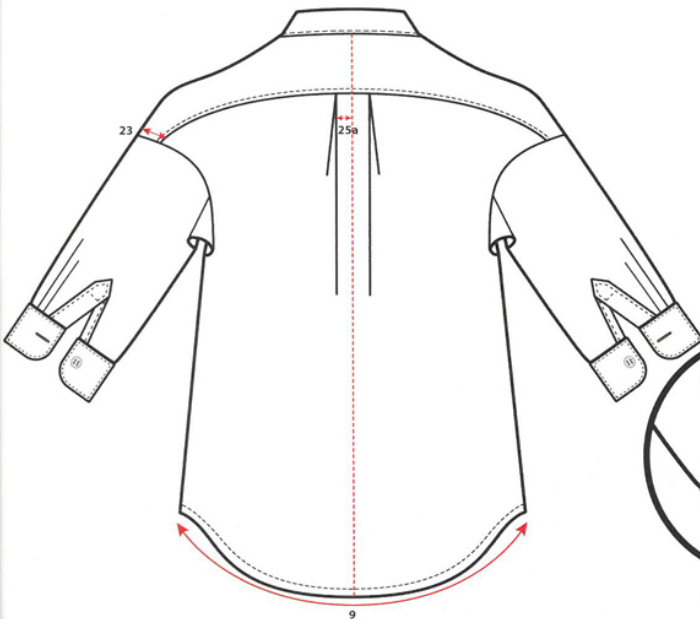
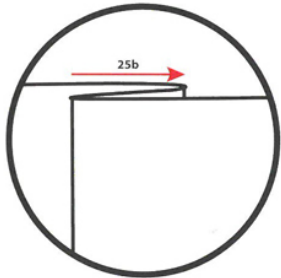
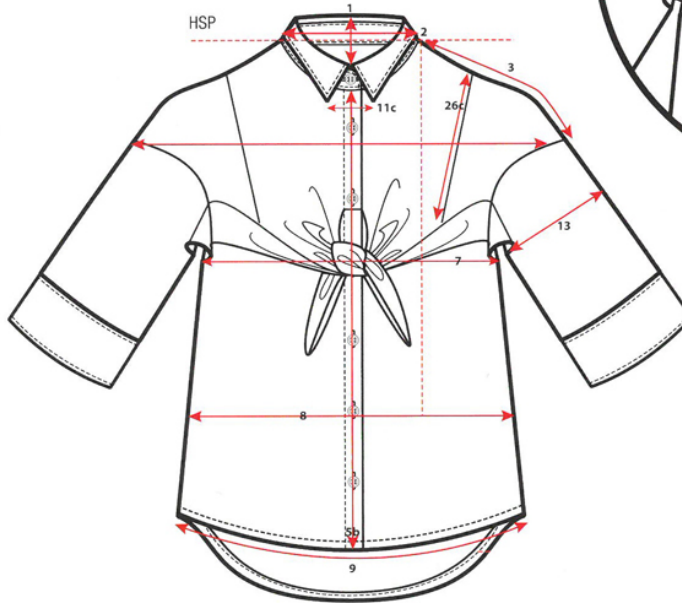
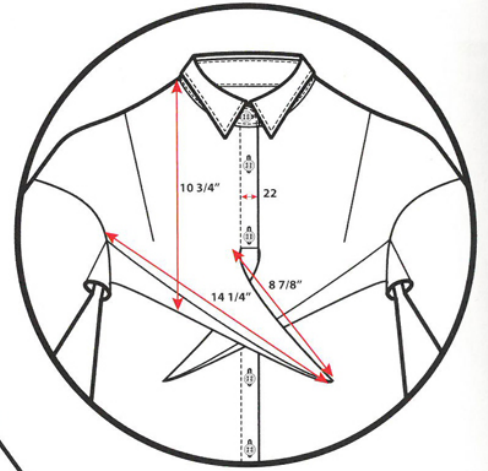
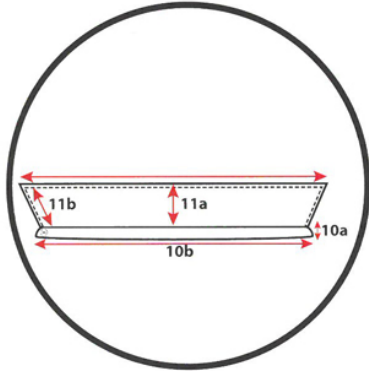
inside front



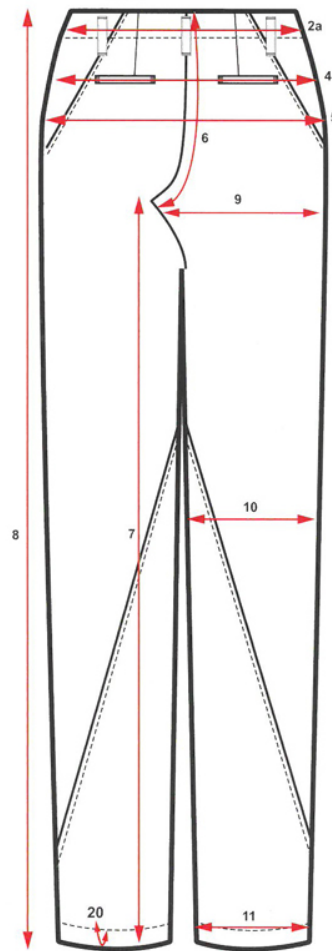
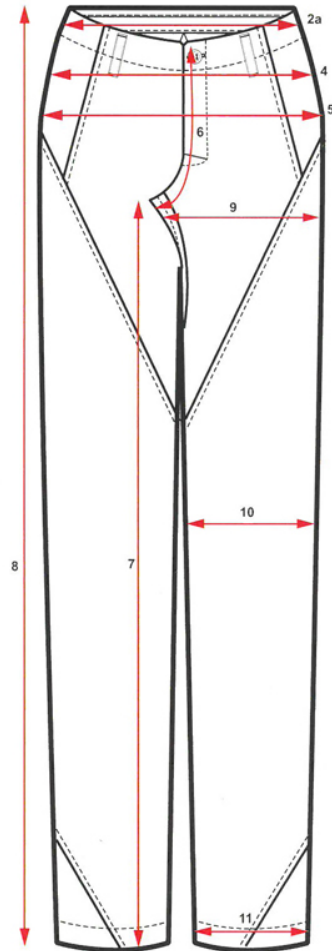
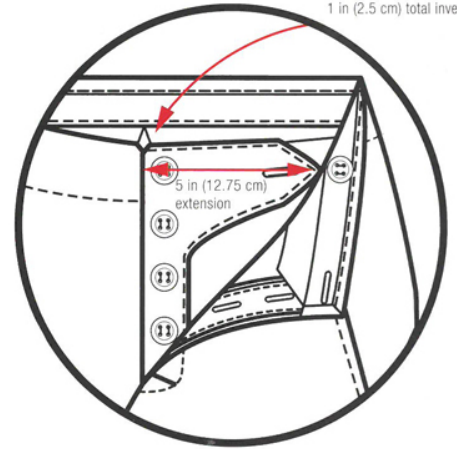
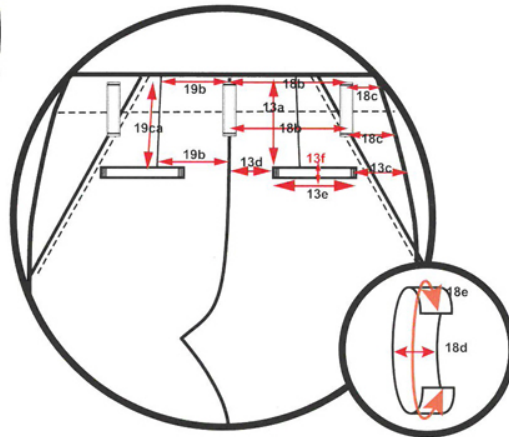
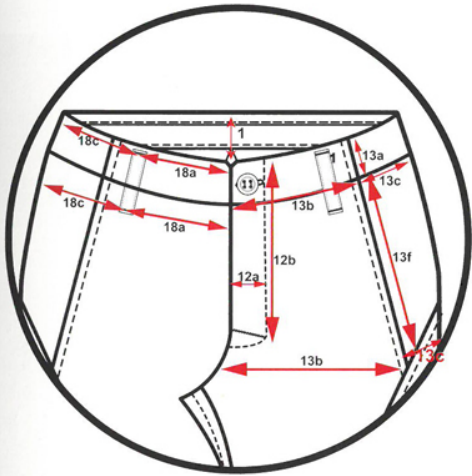
various closures including zips, buttons and hook-and-eye tabs

Production Sketches

Sketching for production brings with it a whole different set of parameters. Because production flats function as diagrams for manufacturing garments, there are far more stringent requirements for accuracy—this is not the place for creative license. Drawings feature numbered positions (points of measurement) that correspond to line items on a spreadsheet where precise measurements are recorded. These “specification sheets” are used for the initial manufacture of production samples and follow up for quality control.

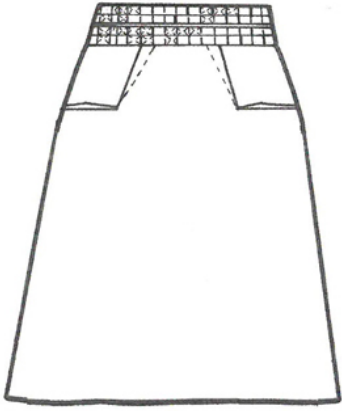


1 in (2.5 cm) total inverted pleat



◀▶ Innovative construction details in particular must be described fully and accurately for production. Technical sketches by Anne Lau.

SKIRTS



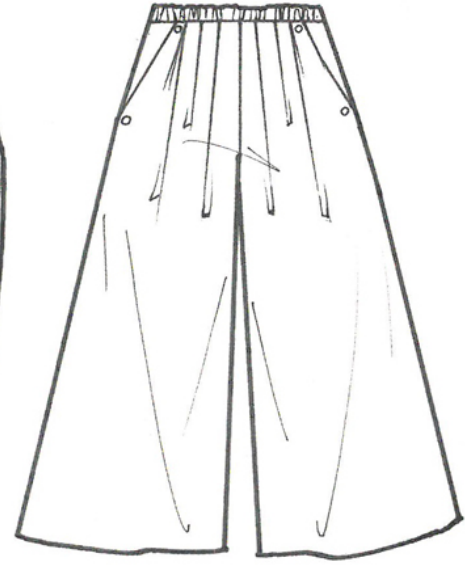
A-line



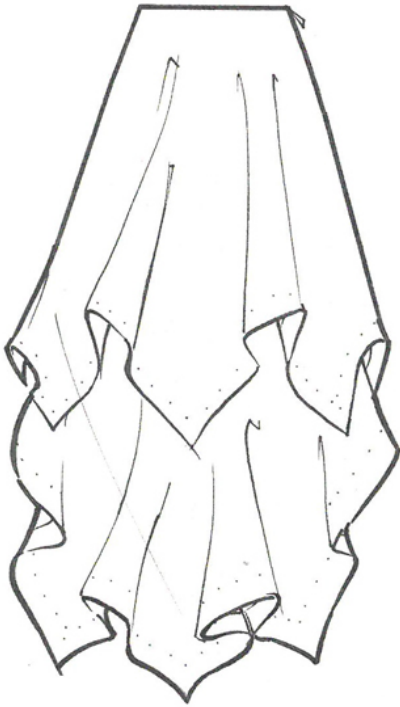
Tiered



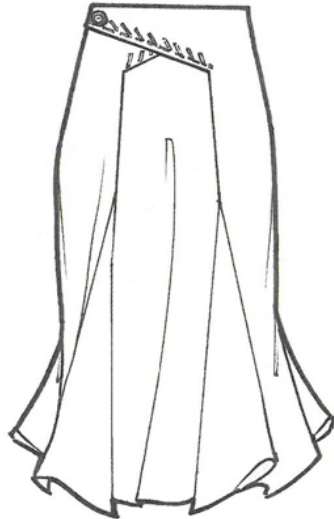
Sarong



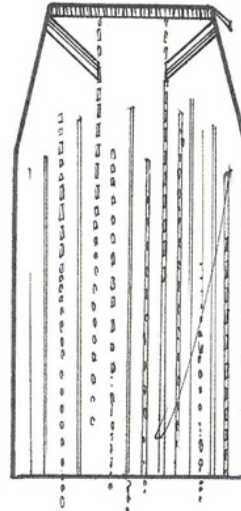
Culotte



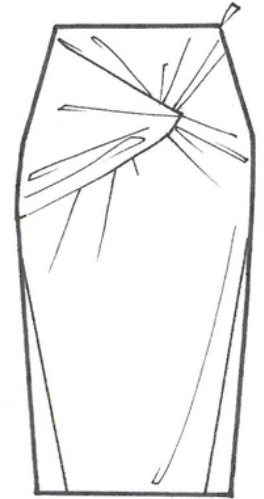
Layered handkerchief



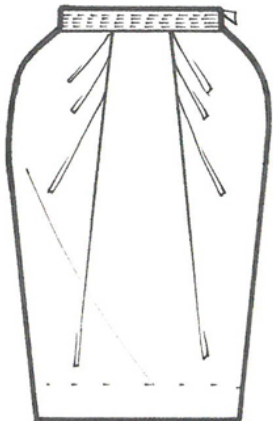
Trumpet with godets



Straight



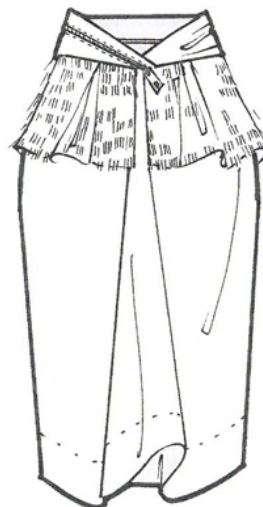
Fitted



Pegged



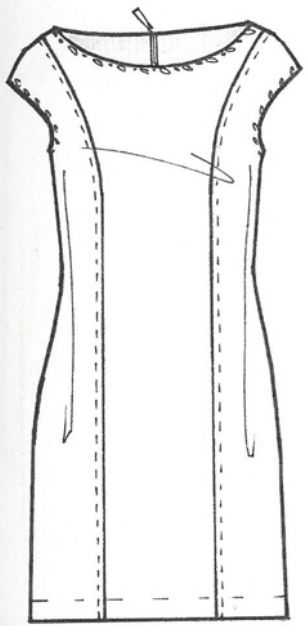
Flared



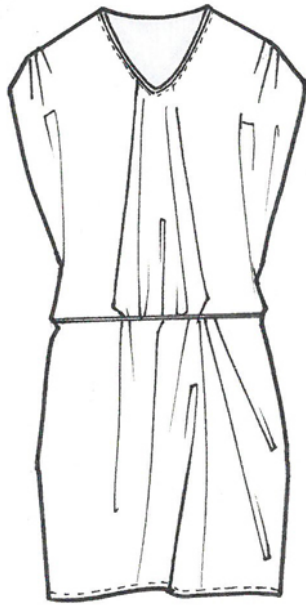
Straight with peplum



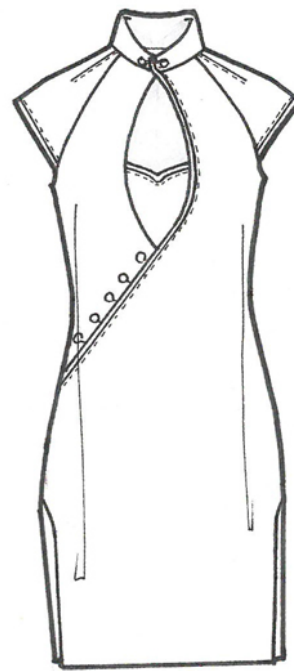
Dirndl



Chemise
Cap sleeve
Princess seam



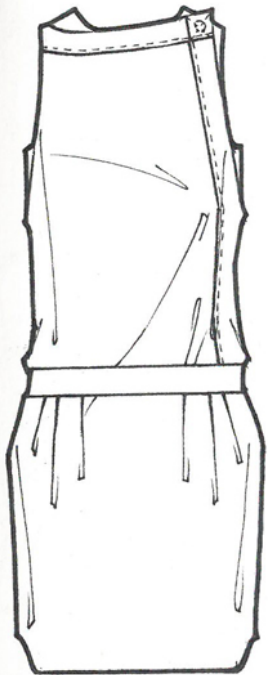
Sack dress
V-neckline



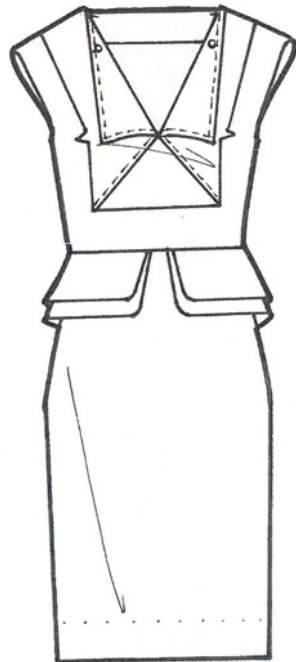
Cheongsam
Keyhole neckline
Raglan armhole



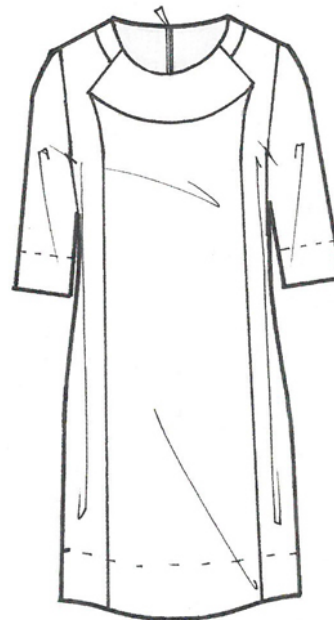
Sheath
U-neckline
Raglan armhole



Dropped waist
Asymmetric neckline
Shirttail hem



Sheath
Sailor collar
Peplum

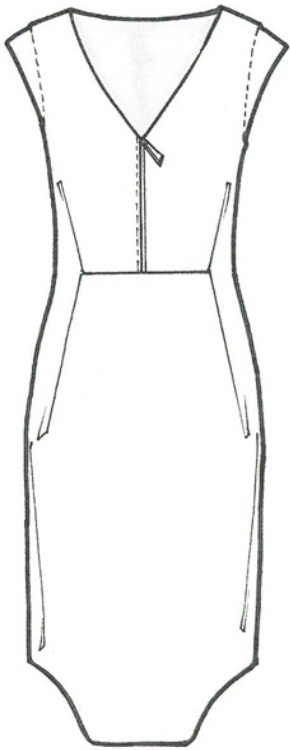


Shift
Jewel neckline
Three-quarter sleeve

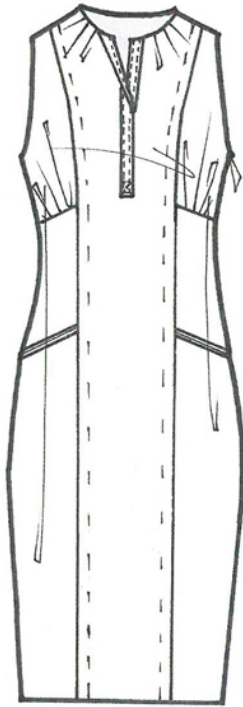


Shift
V-neckline
Capelet

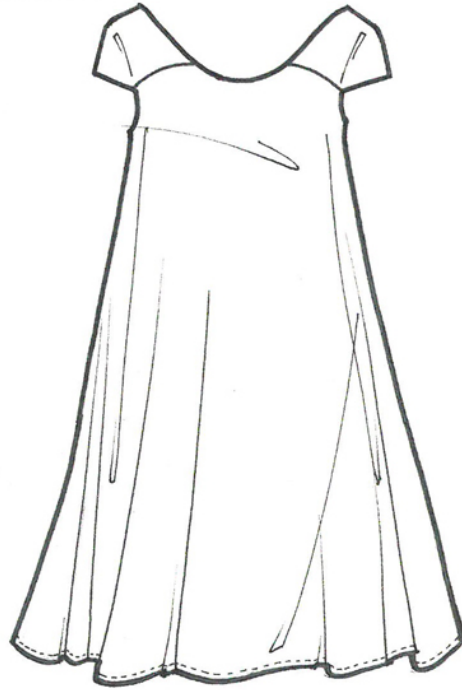
DRESSES



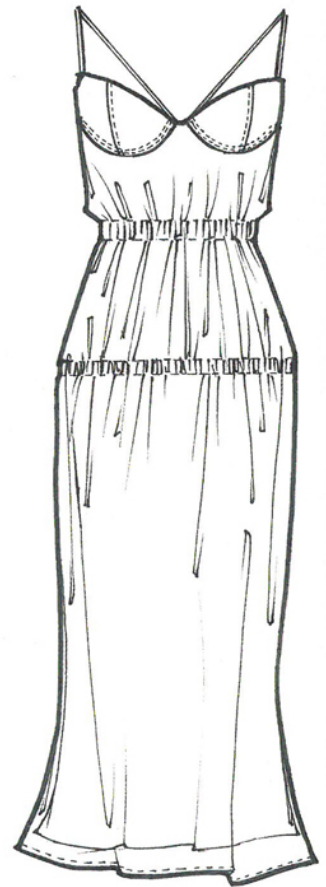
Shift
V-neckline
Waist dart



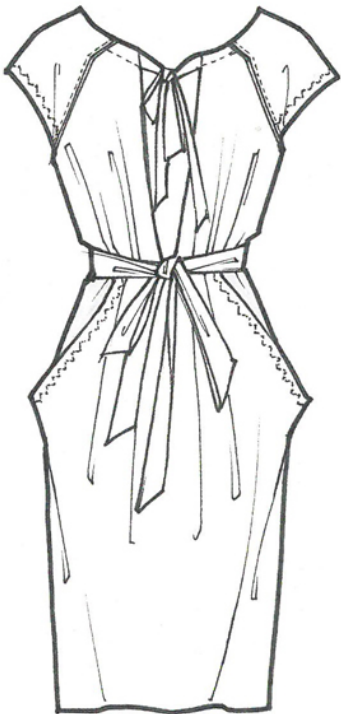
Sheath
Princess line
Empire waist



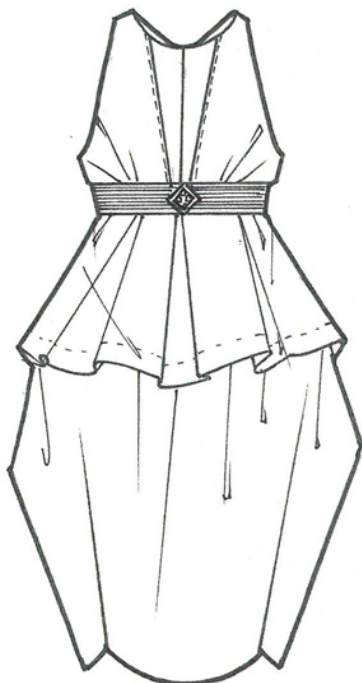
Trapeze
Cap sleeve
Empire waist



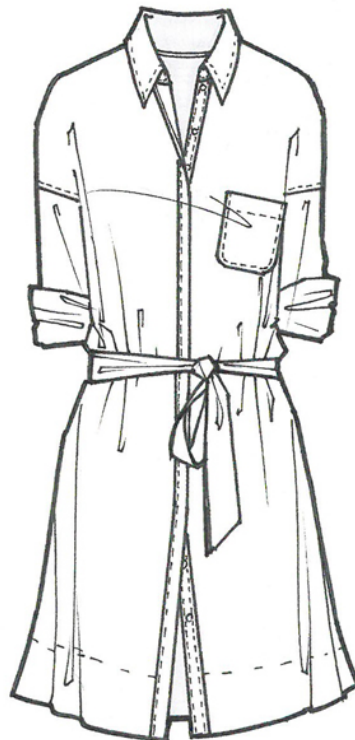
Bustier bodice
Elastic at waist and low hip



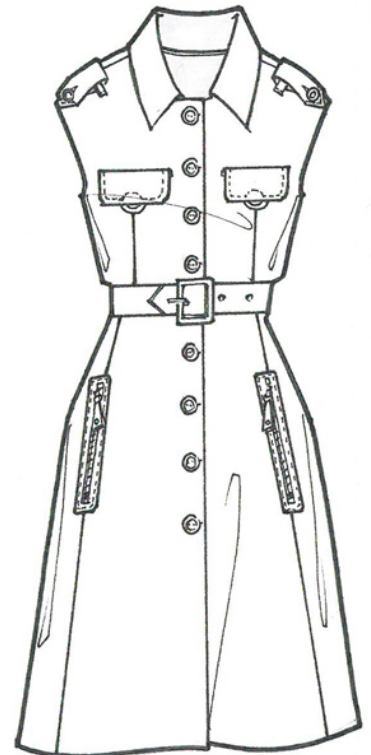
Belted shift
Saddle shoulder
Slash pocket



Jewel neck
Halter armhole
Empire peplum

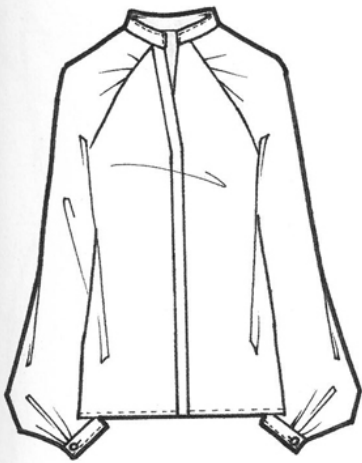


Belted shirtdress
Spread collar
Drop shoulder



Safari shirtdress
Self belt
Onseam zipper pocket

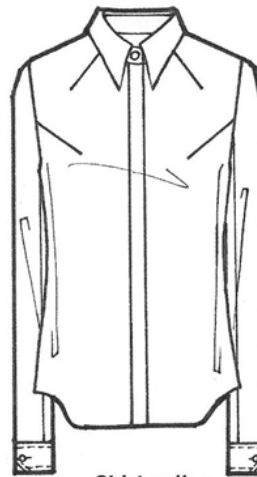
COLLARS



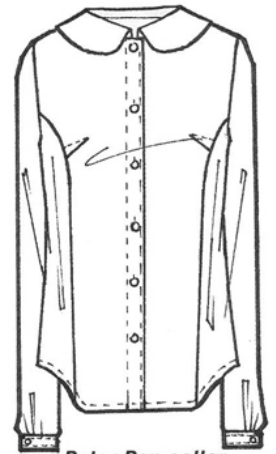
Mandarin collar
Raglan armhole
Bishop sleeve



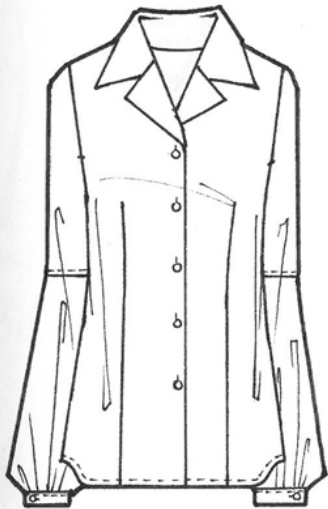
Mandarin collar
Set-in armhole, puff sleeve
Shoulder/waist darts



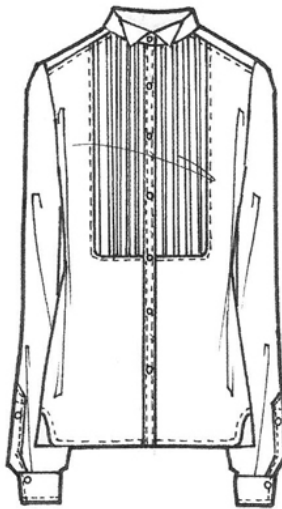
Shirt collar
Neckline/armhole darts
Fly front



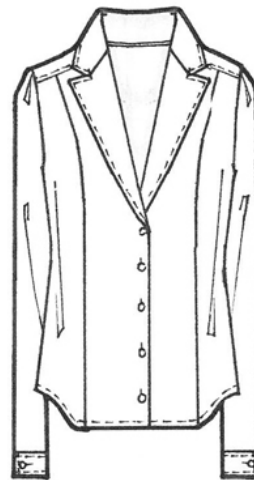
Peter Pan collar
Set-in armhole
Princess seam



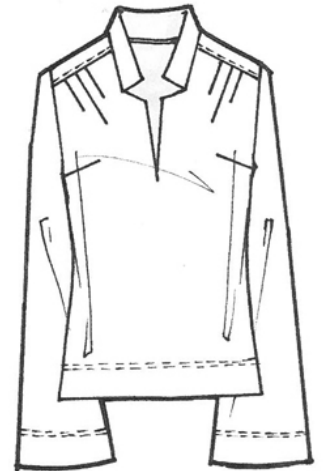
Convertible collar
Variation on bishop sleeve
Shirttail hem



Winged collar
Tuxedo shirt
Pleated bib



Notched collar
Princess seam
Shirttail hem



Open notched collar
Pagoda sleeve
Pleated yoke



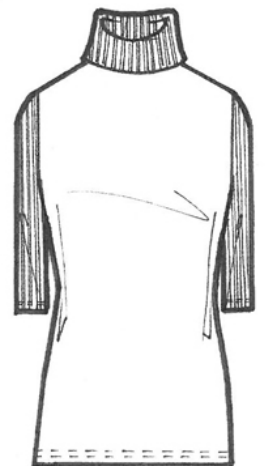
Sailor collar
Epaulet
Flutter sleeve



Shawl collar
Set-in armhole
Bell sleeve



Tied collar
Dolman sleeve
Shirttail hem

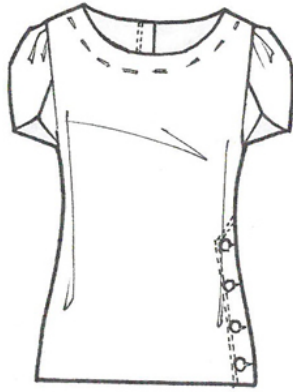


Turtleneck
Cut-and-sew sweater
Rib sleeve

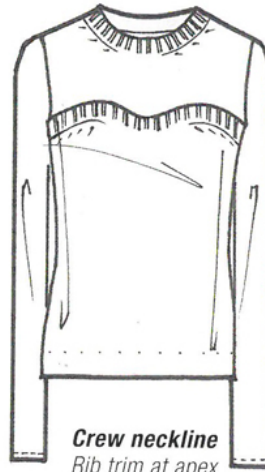
NECKLINES



Jewel neckline
Cascading cap sleeve
Blouson



Scoop neckline
Petal sleeve
Button-through side entry



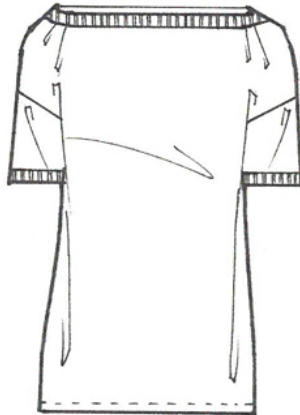
Crew neckline
Rib trim at apex
Straight sleeve



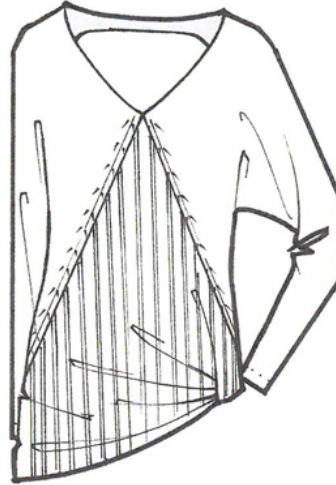
U-neckline
Cap sleeve



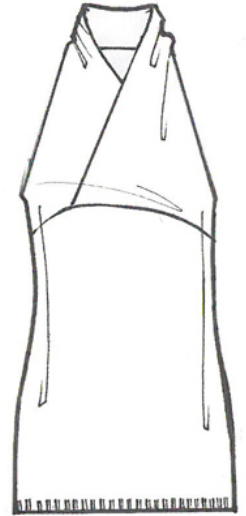
Square neckline
Kimono sleeve



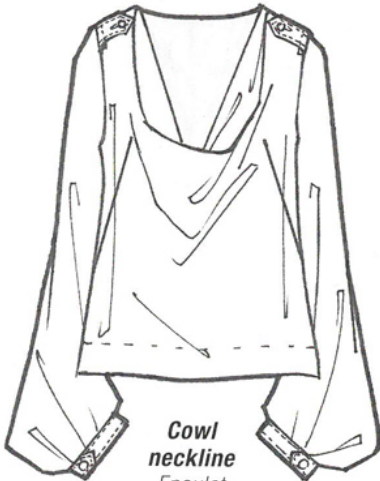
Boat neckline
Drop shoulder



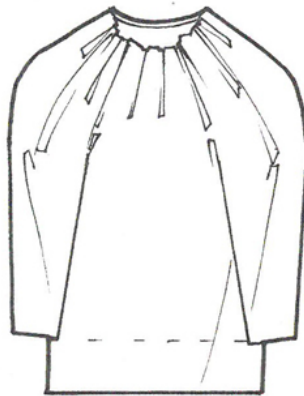
V-neckline
Batwing sleeve
Rib trim insert



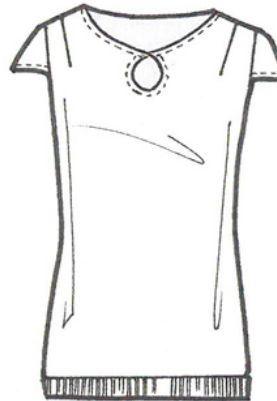
Surplice neckline
Halter armhole
Empire waist



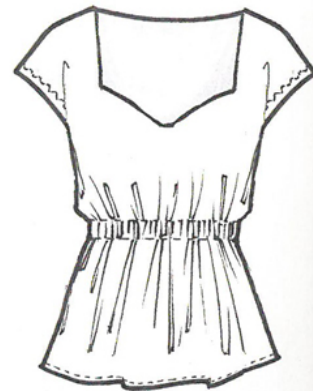
Cowl neckline
Epaulet
French dart



Gathered jewel neckline
Dolman sleeve

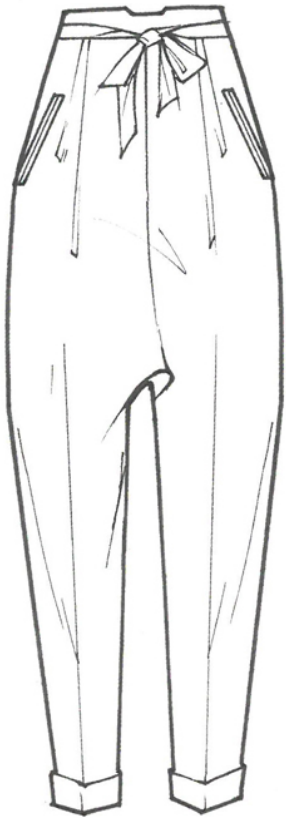


Keyhole neckline
Cap sleeve
Rib trim



Sweetheart neckline
Cap sleeve
Peplum

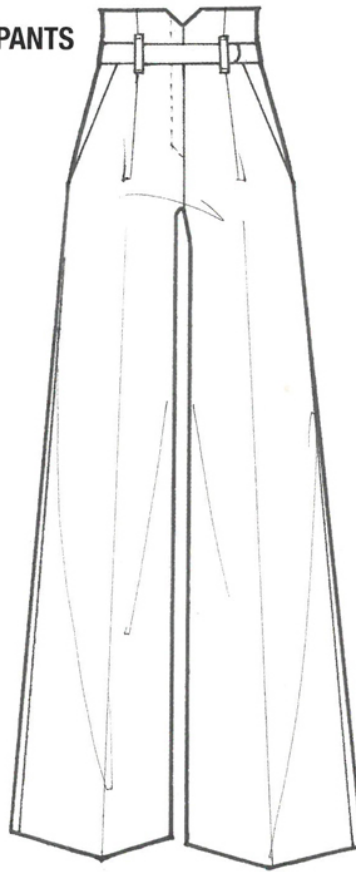
PANTS



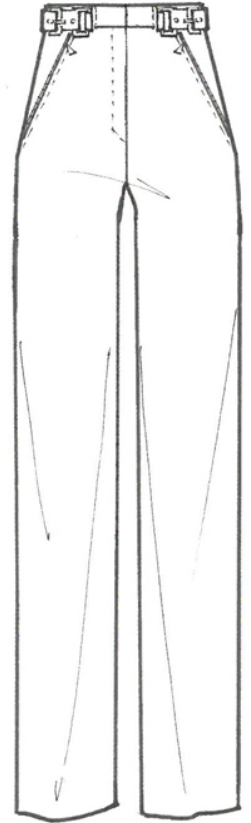
Dhoti



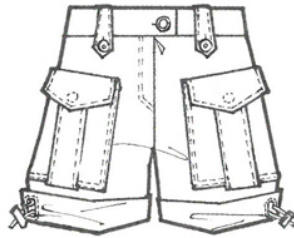
Sweatpants



Hollywood waist



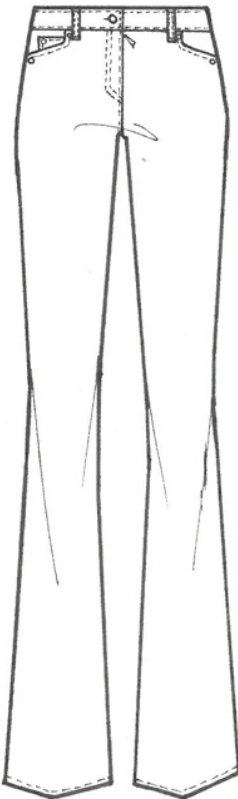
Plain front



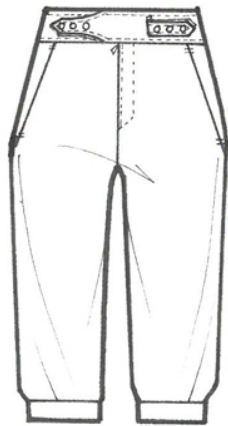
Cargo shorts



Jodhpurs



Bell-bottom five-pocket jeans

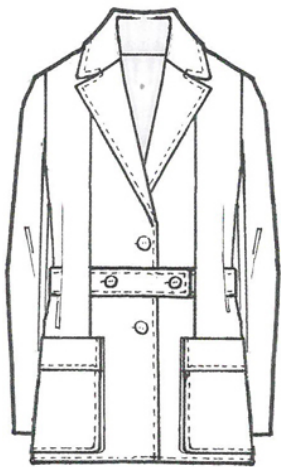


Knickers

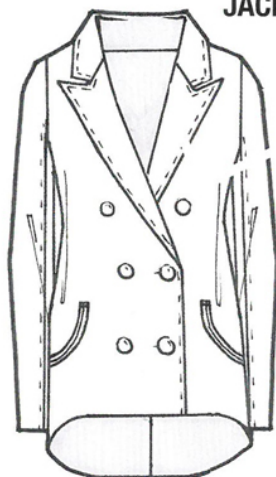


Palazzo

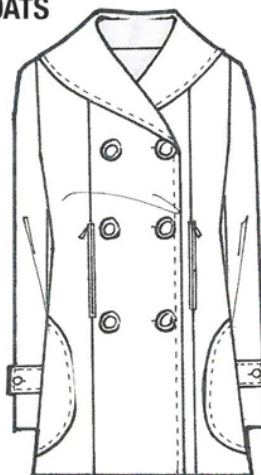
JACKETS AND COATS



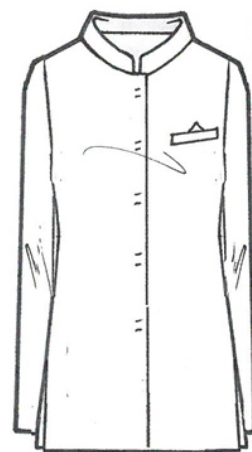
Norfolk jacket
Notched collar
Bellows pocket



Double-breasted blazer
Peaked lapel
Fishtail hem



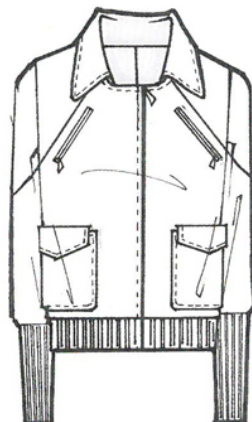
Peacoat
Shawl collar
Adjustable tab sleeve



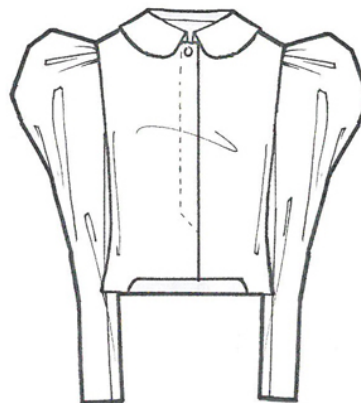
Nehru jacket
Mandarin collar
Angled welt pocket



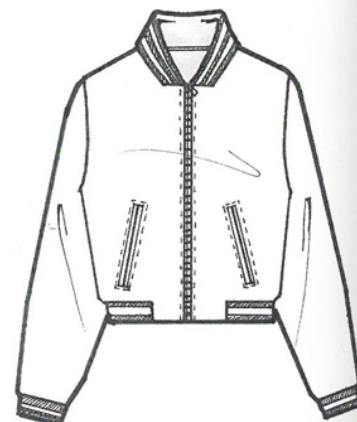
Safari jacket
Epaulet
Flap patch pocket



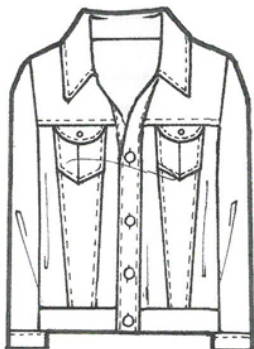
Bomber jacket
Flap patch pocket
Rib trim



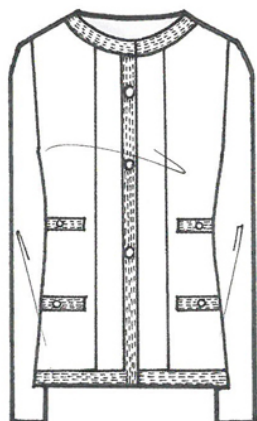
Spencer jacket
Gigot sleeve
Fly front



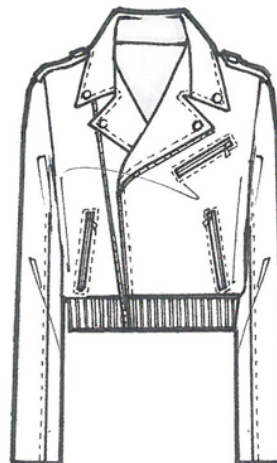
Varsity jacket
Angled besom pocket
Rib trim



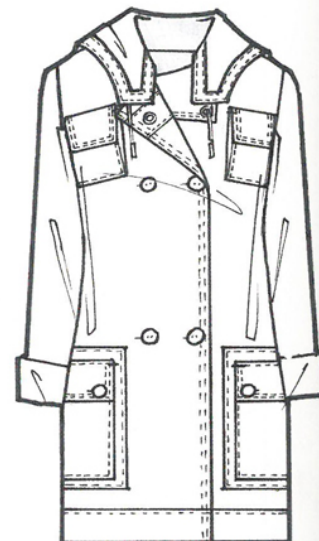
Jean jacket
Yoke
Flap patch pocket



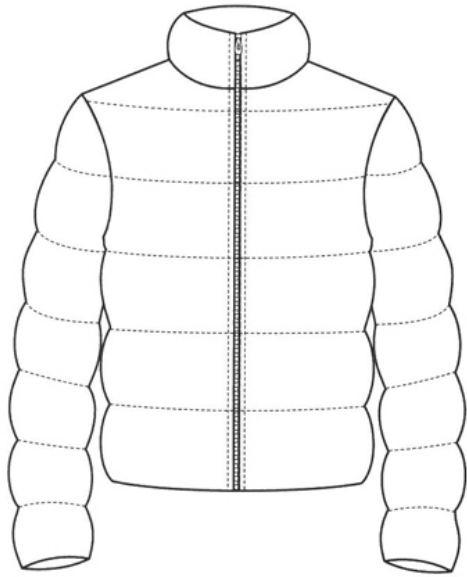
Chanel/Cardigan jacket
Grosgrain ribbon trim
Welt pocket



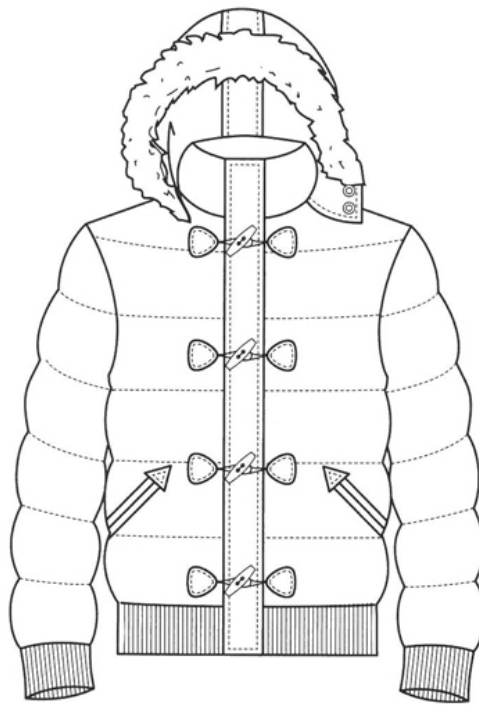
Motorcycle jacket
Epaulet
Asymmetric zipper closure



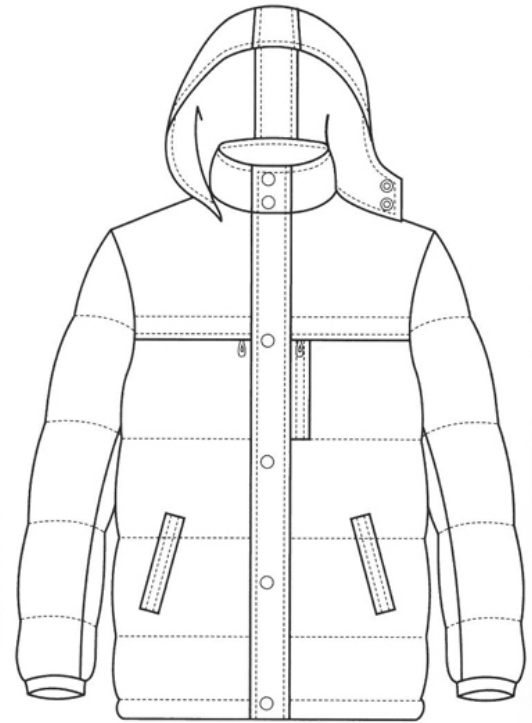
Hooded parka
Flap patch pocket



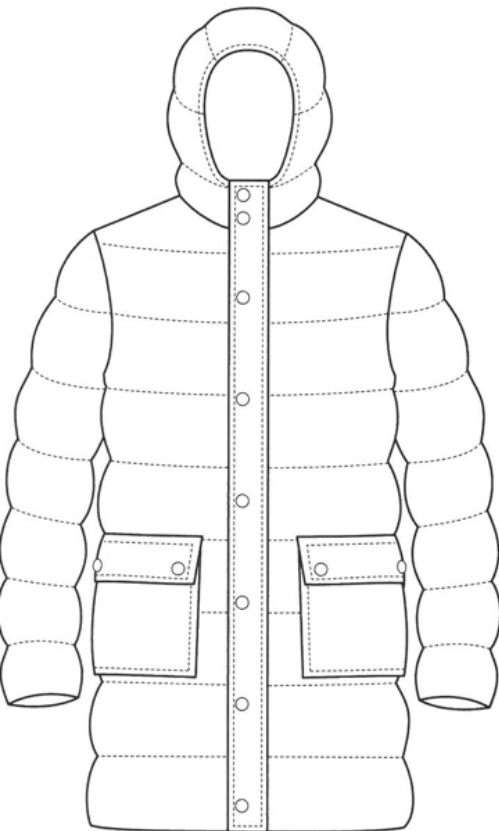
basic puffy jacket



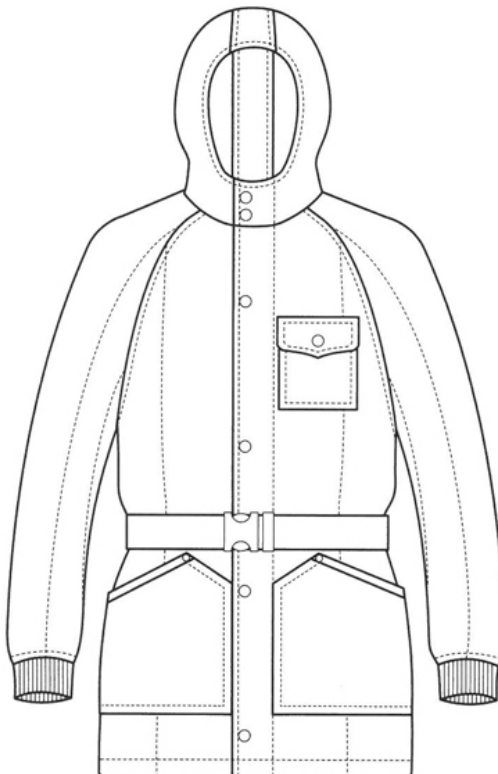
puffy jacket with toggles, ribbed waistband and cuffs, and fur-lined hood



medium length puffy jacket with hood



long puffy jacket with hood

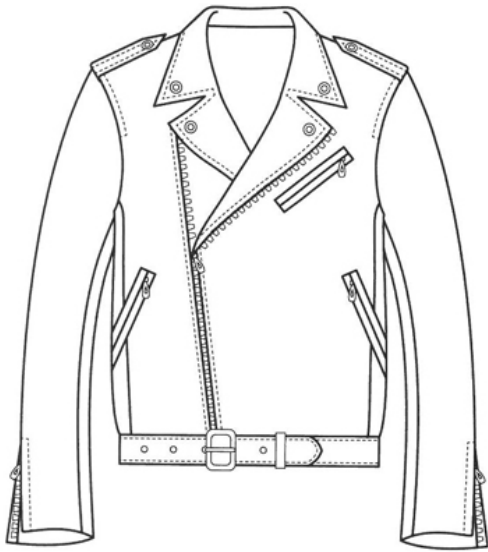


padded jacket with raglan sleeves

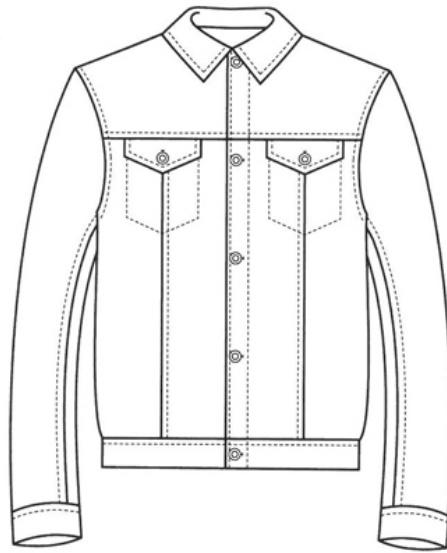


padded jacket with fur collar

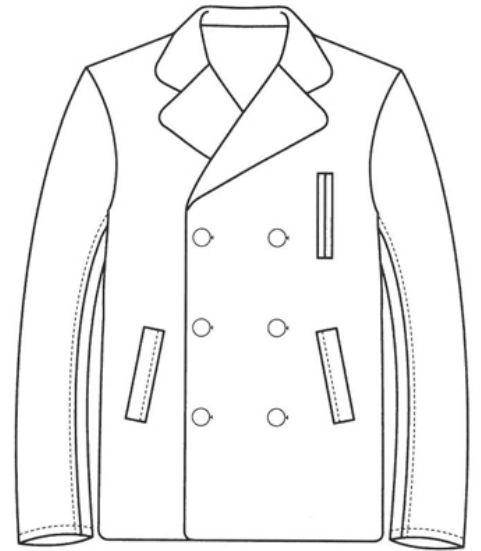
Casual jackets



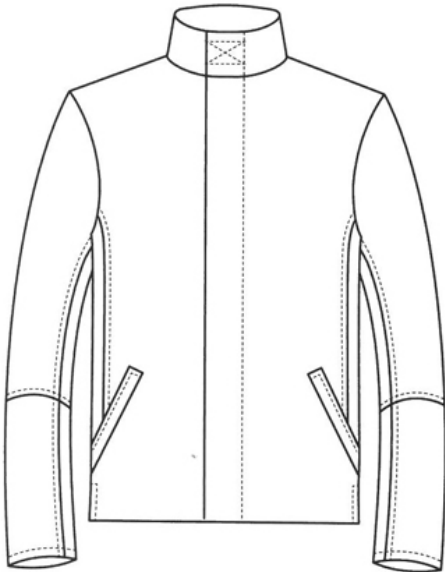
classic biker jacket



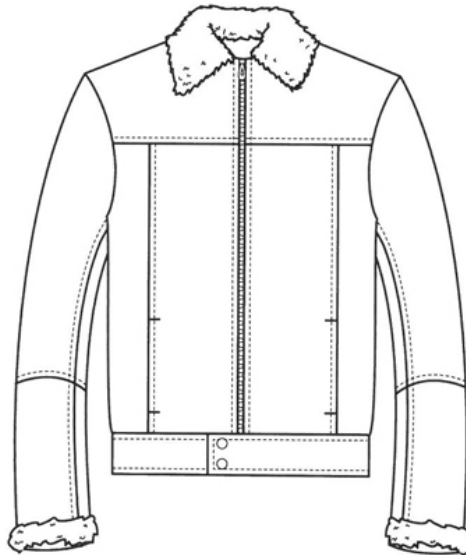
denim jacket



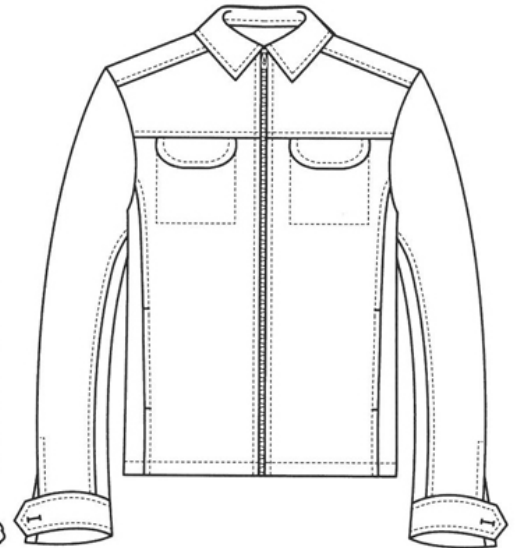
nautical style jacket



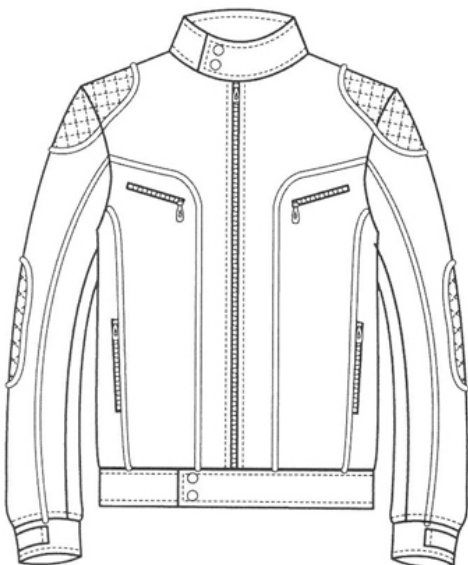
minimalist style jacket with hidden button placket



short sheepskin jacket



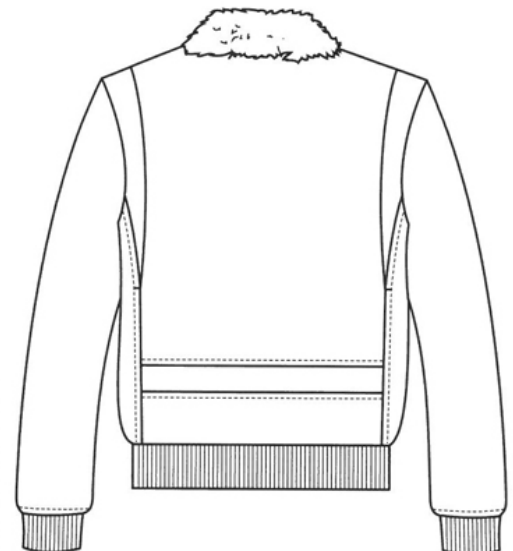
shirt jacket with collar



biker jacket with press stud band collar



classic aviator jacket front

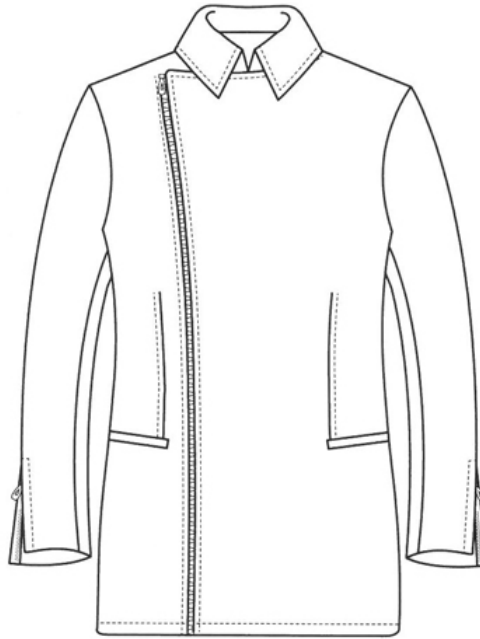


aviator jacket back

Basic jackets



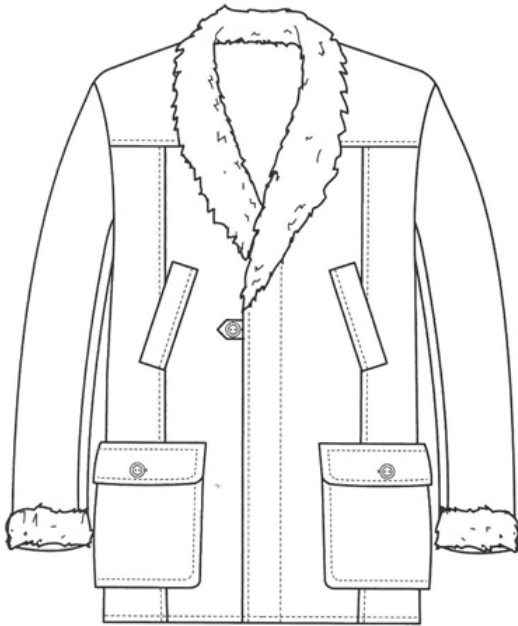
quilted husky jacket



jacket with asymmetric zip



Capalbio jacket



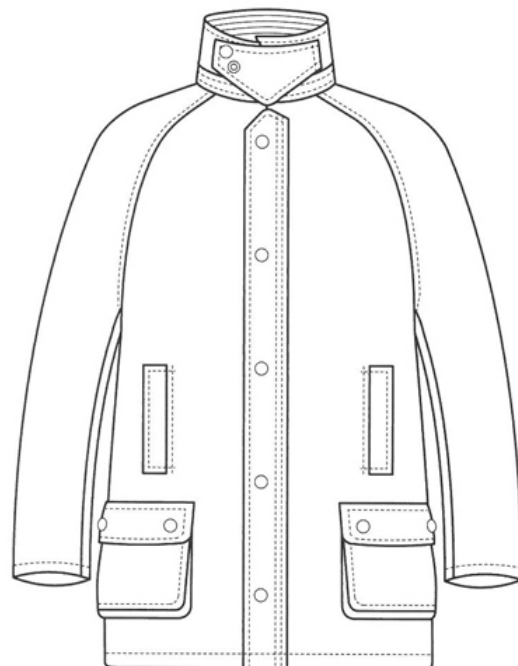
sheepskin jacket



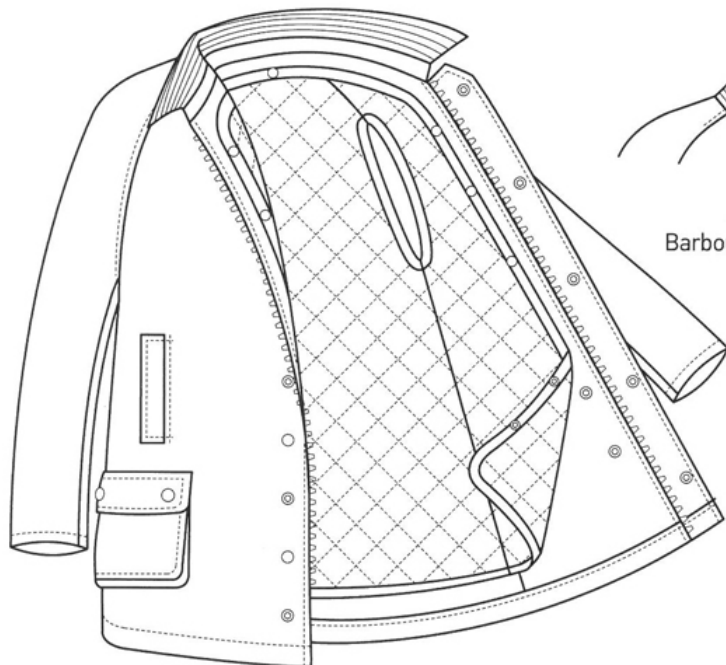
sailor jacket



jacket with concealed zip



Barbour jacket



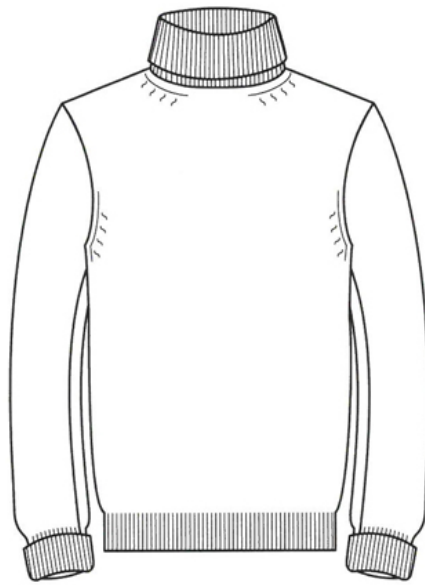
open Barbour jacket with detachable quilted lining



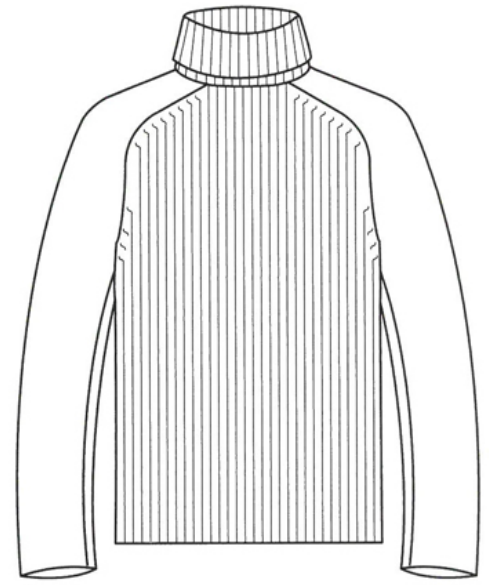
Barbour collar with extra flap



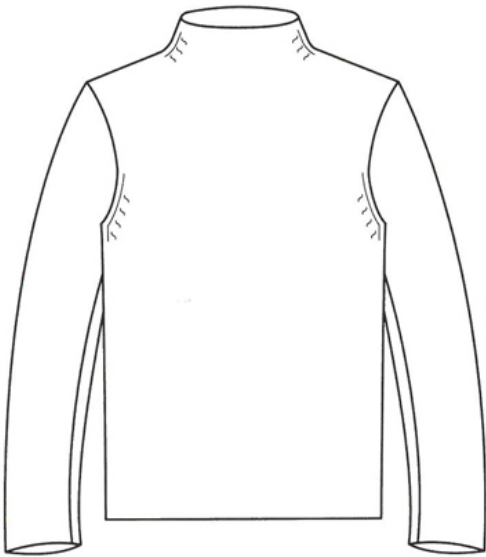
funnel-neck sweater with zip and wide ribbed cuffs and waistband



roll-neck sweater with turn back cuffs



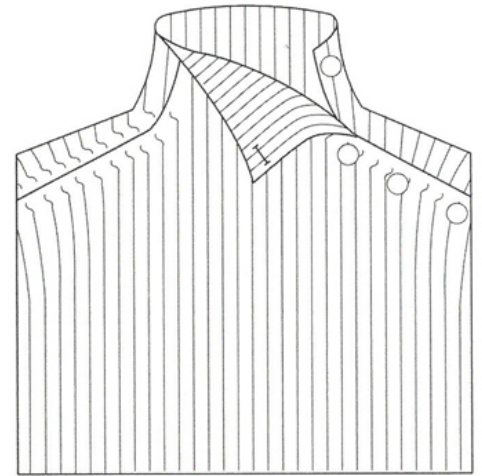
straight sweater with hammer sleeves, ribbed front and collar



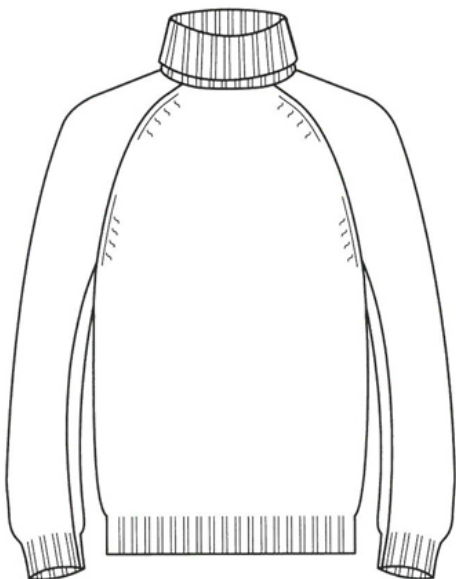
straight sweater with one-piece collar



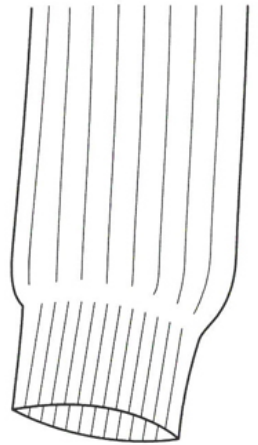
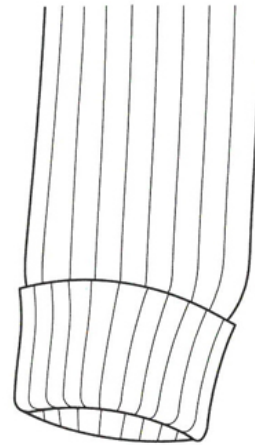
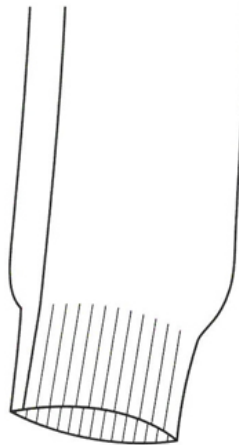
sailor's sweater



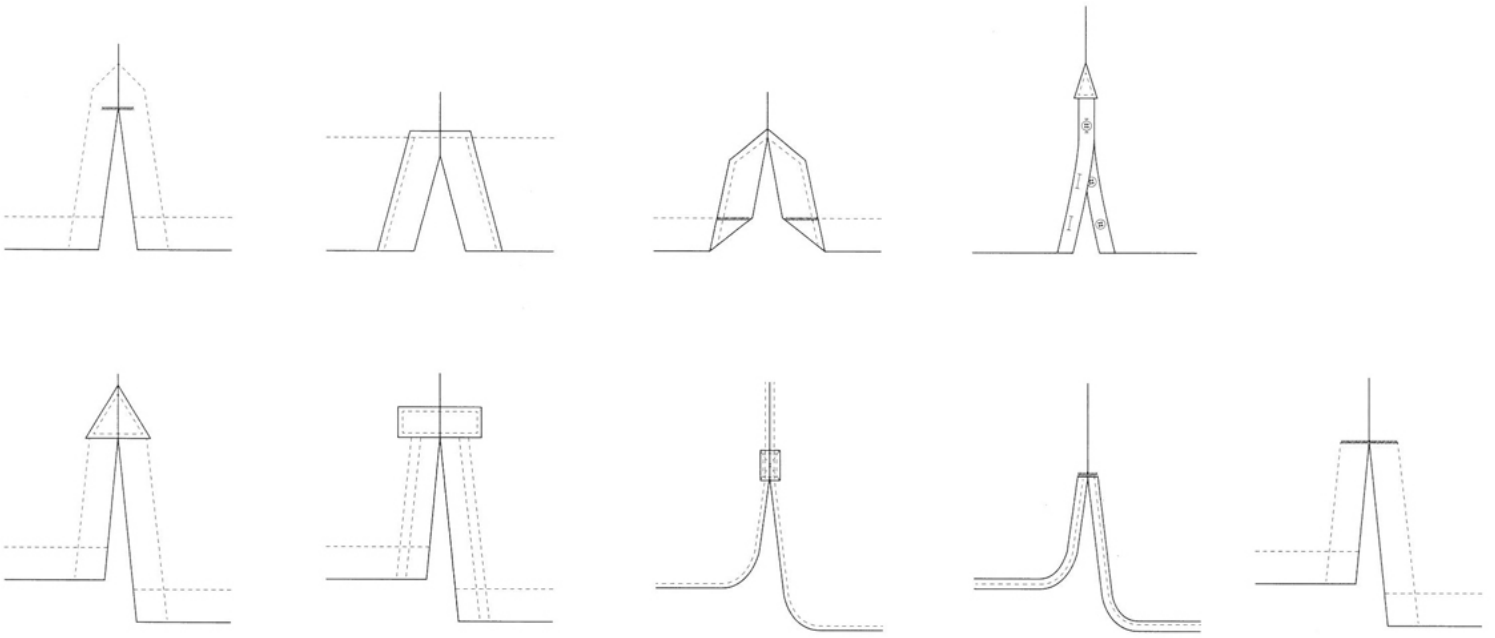
collar detail of a sailor's sweater



roll-neck sweater with raglan sleeves



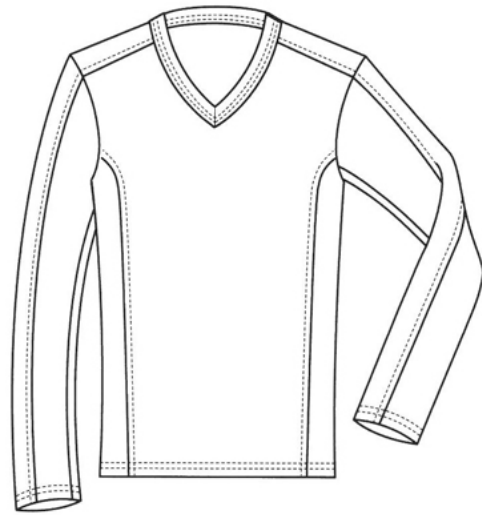
types of ribbed cuffs



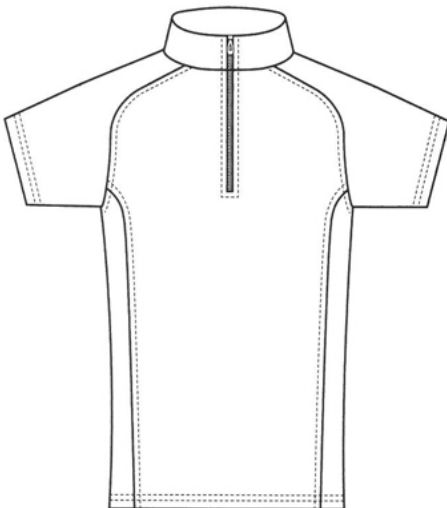
types of side vents for sweatshirts and T-shirts



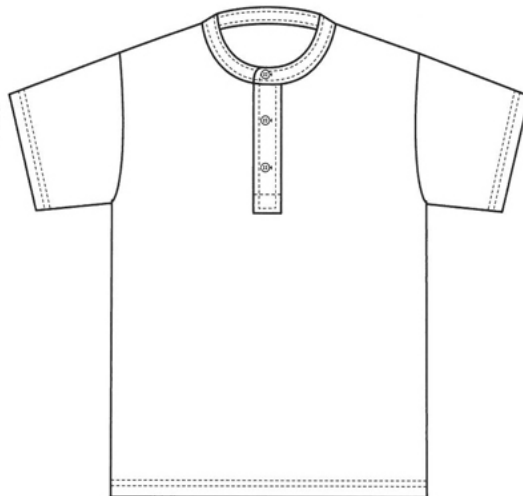
funnel neck shirt with side seams



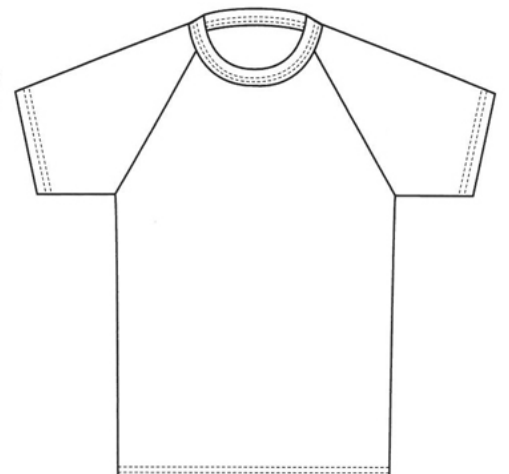
shirt with sportswear seams



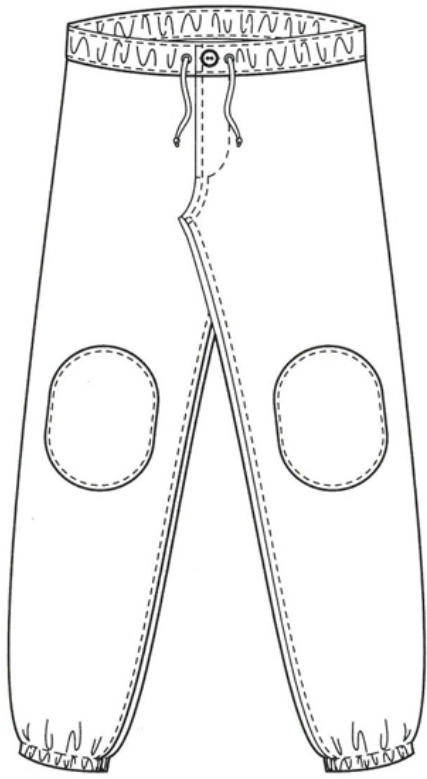
Lycra cycle shirt



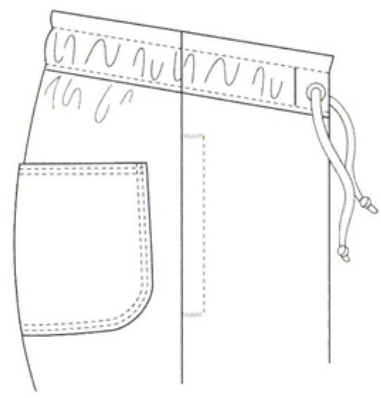
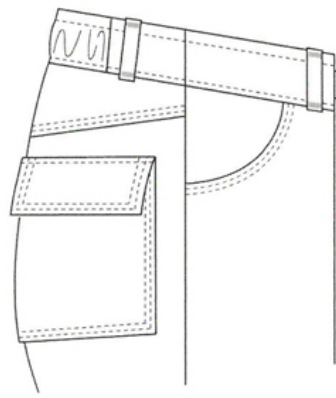
round-neck T-shirt with placket



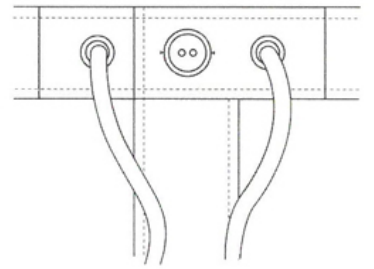
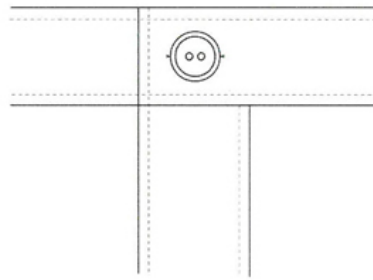
round-neck T-shirt with raglan sleeves



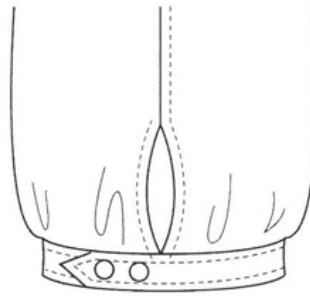
front



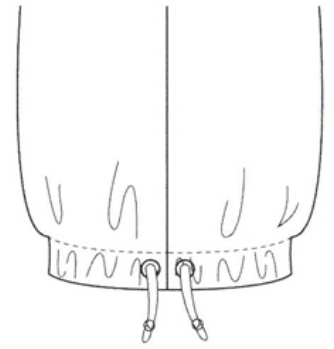
various pockets



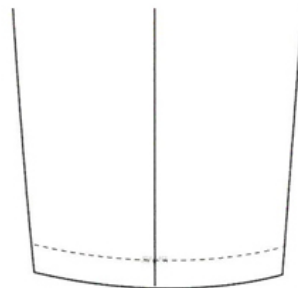
various waistband closures



adjustable strap



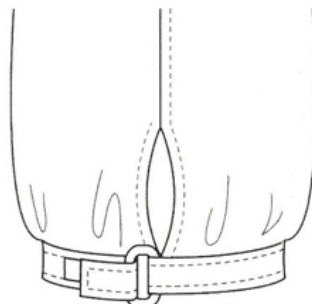
drawstring



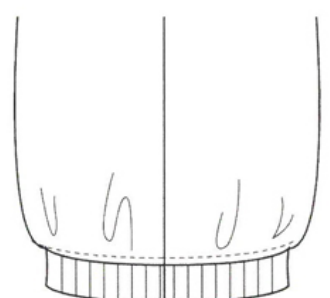
stitched hem



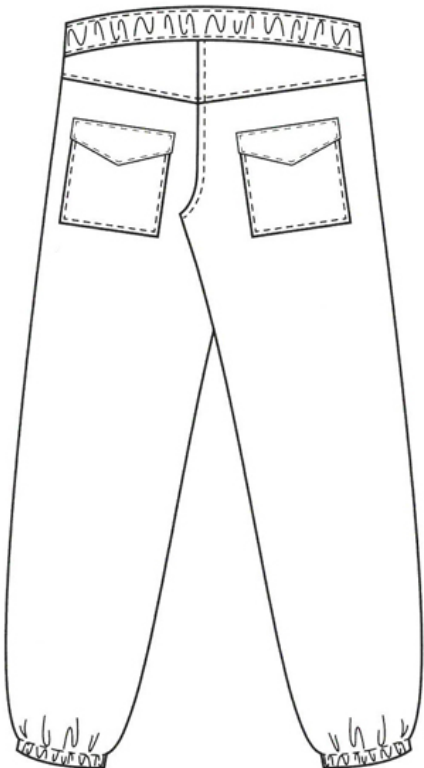
elasticated cuff



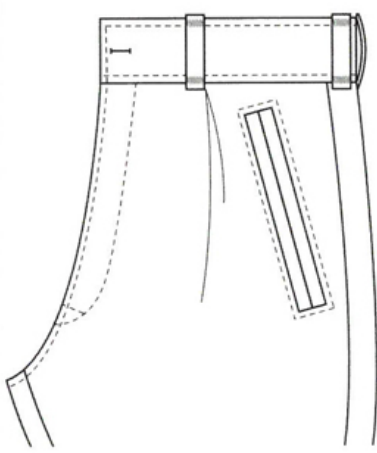
Velcro strap



ribbed cuff



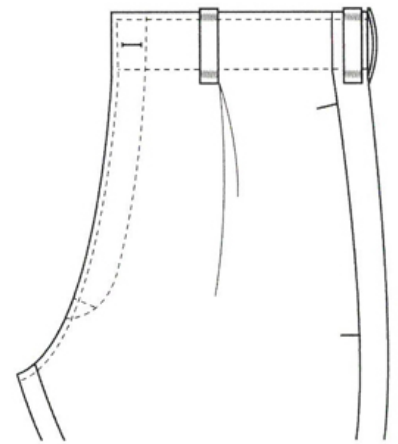
back



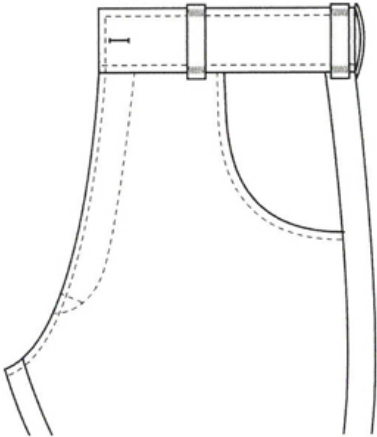
single pleat and jetted pocket



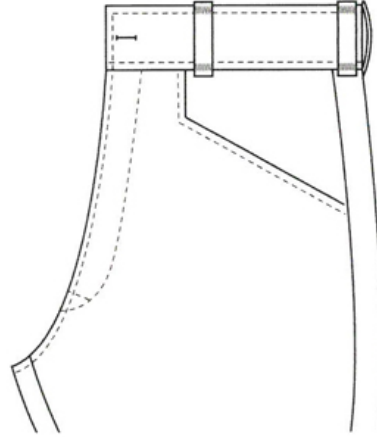
single pleat and welt pocket



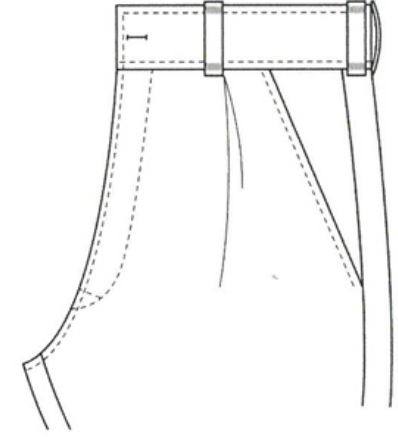
single pleat and in-seam pocket



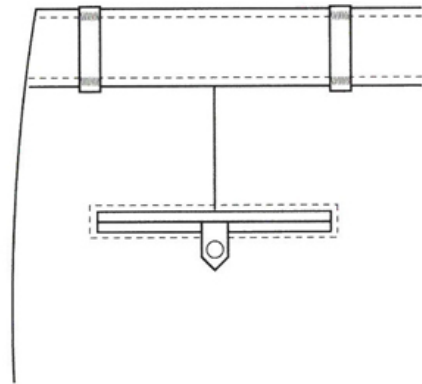
round pocket



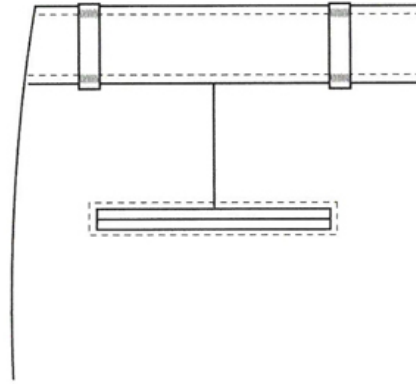
diagonal pocket



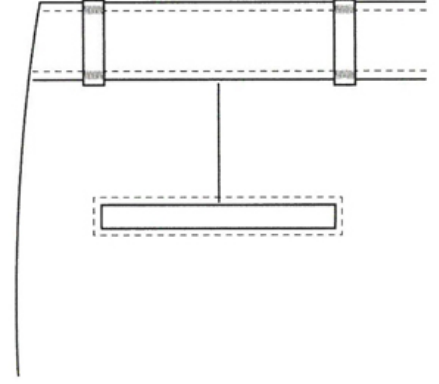
single pleat and slash pocket



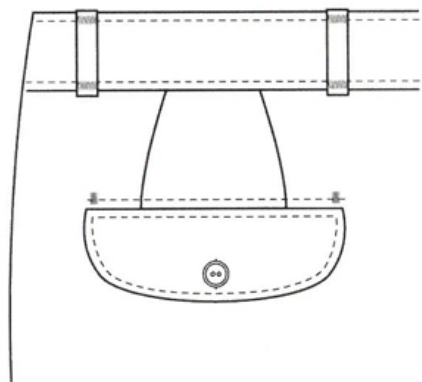
back dart and jetted pocket with tab and button



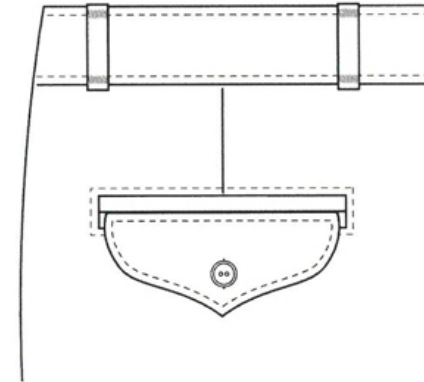
back dart and jetted pocket



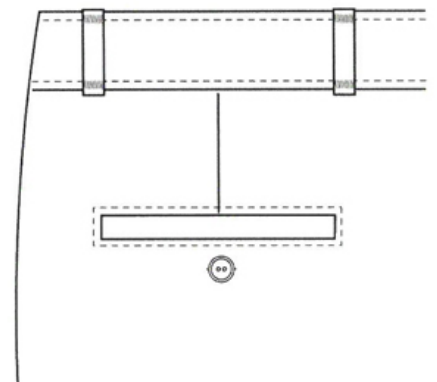
back dart and welt pocket



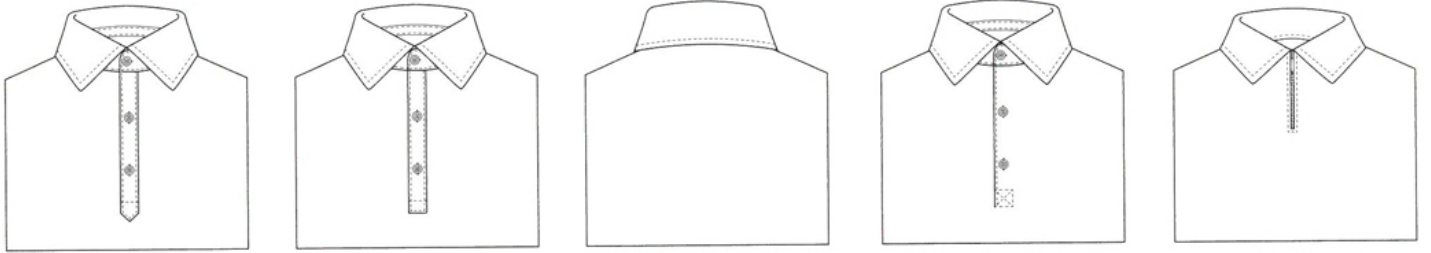
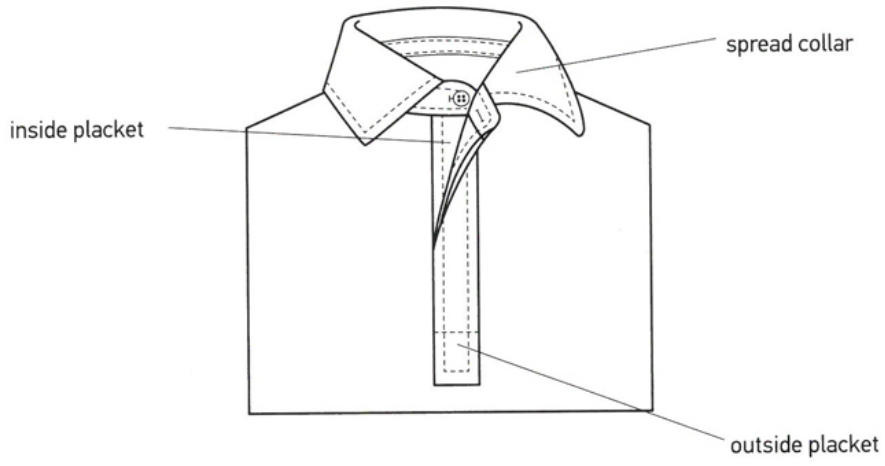
two back darts and rounded flap pocket with button



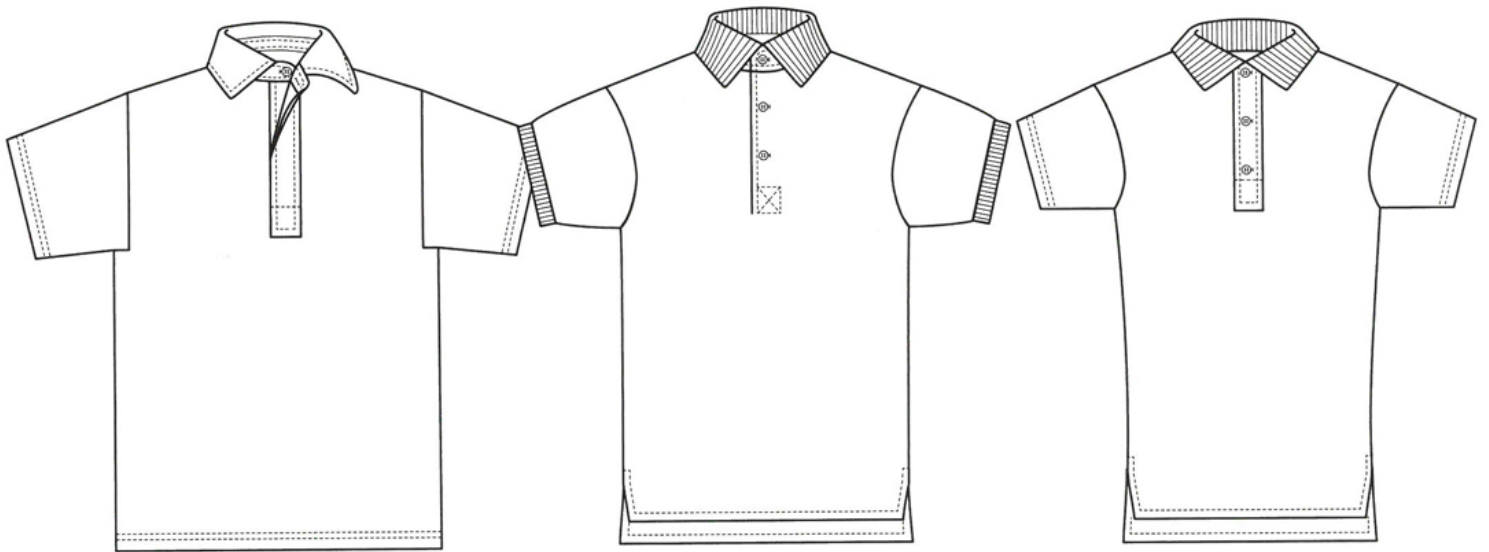
pointed rounded flap with button



back dart and welt pocket with button



types of polo shirt collars



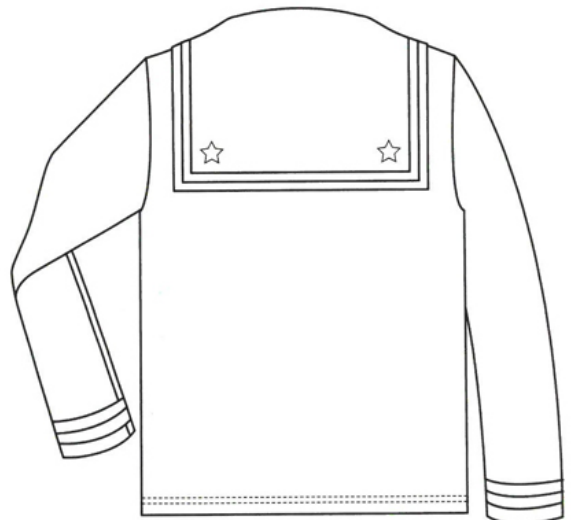
loose fitting polo shirt

slim-fitting polo shirt with ribbed collar and cuffs

slim-fitting polo shirt



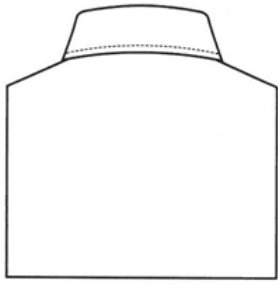
sailor shirt front



sailor shirt back



front



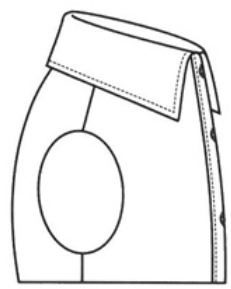
back



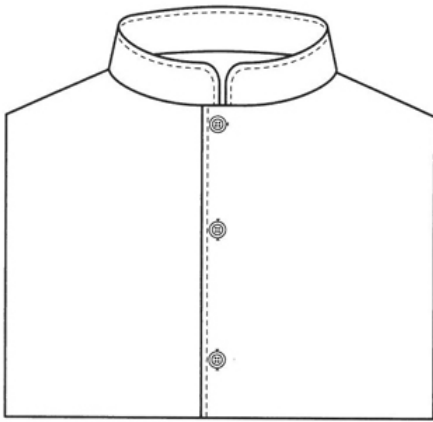
three-quarter



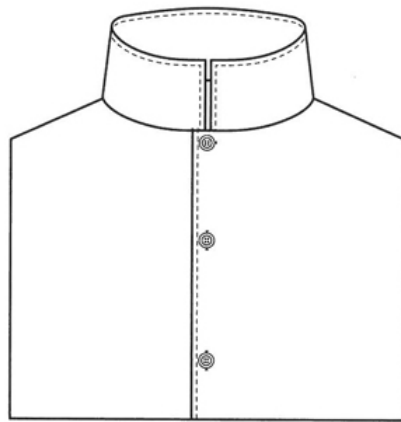
unbuttoned



profile



Mandarin collar



stand collar



spread collar



1970s style collar with long collar points



button-down collar



cutaway collar



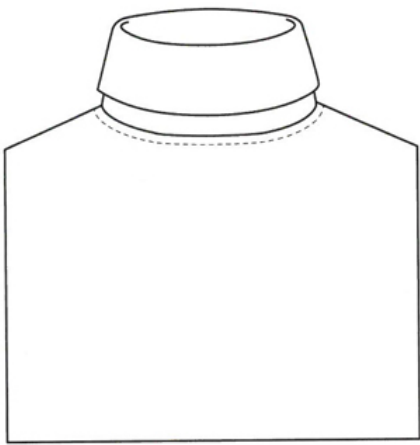
tab collar



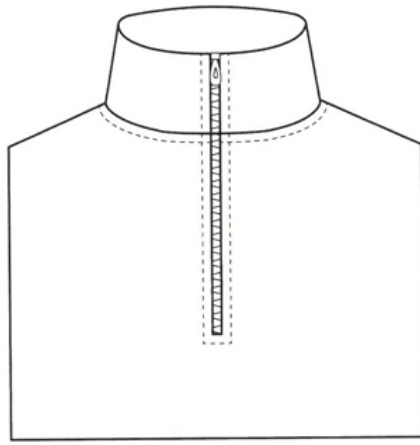
straight point or turndown collar



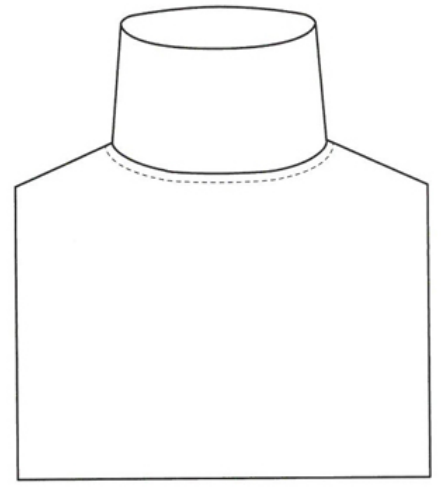
pin collar



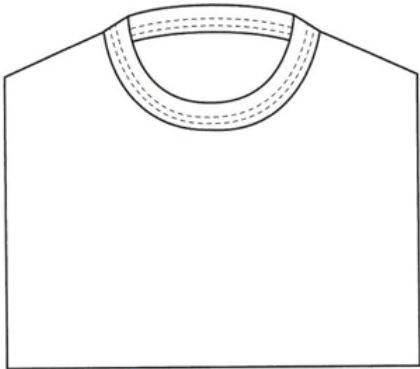
polo neck



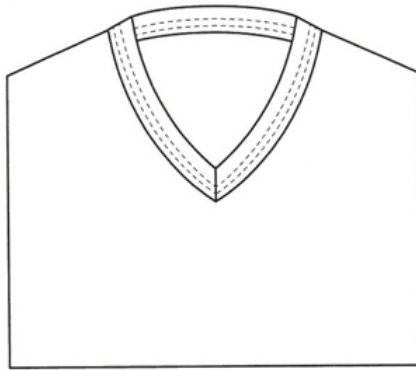
stand-up collar with zip



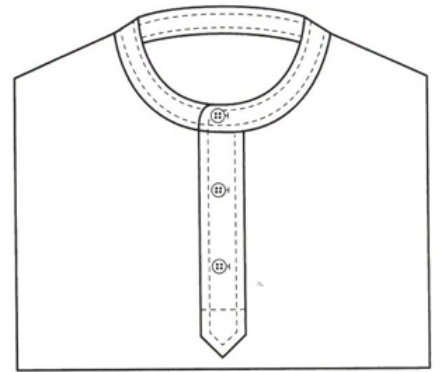
high roll neck



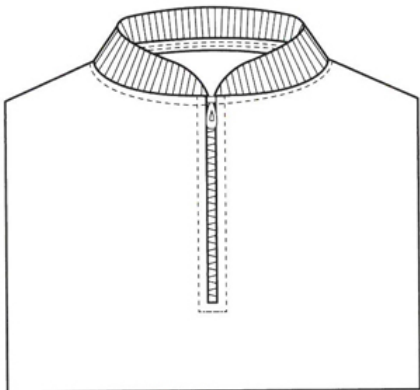
round neck



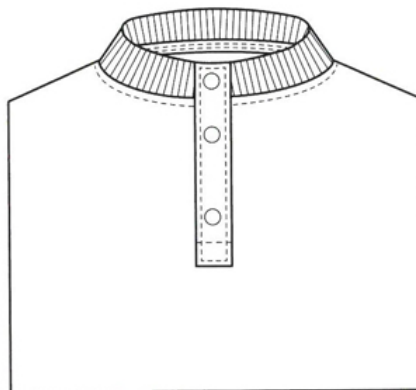
standard V-neck



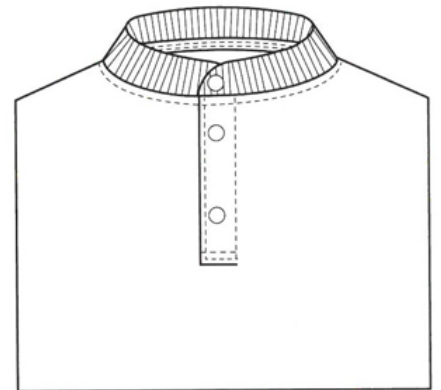
round neck with pointed placket



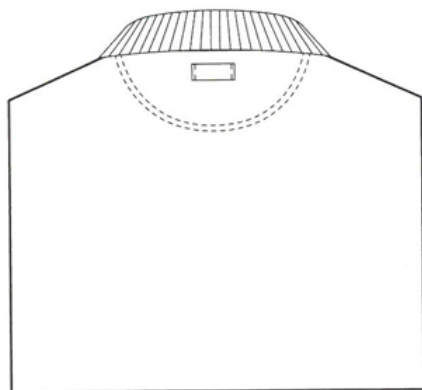
ribbed collar with zip



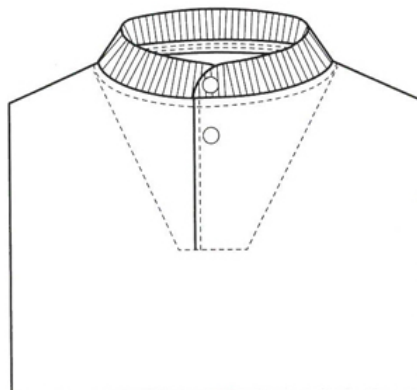
ribbed collar with standard placket



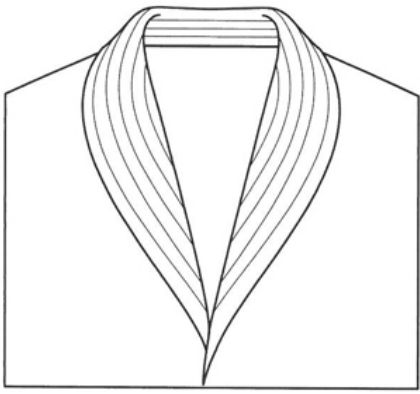
ribbed collar with seamless placket



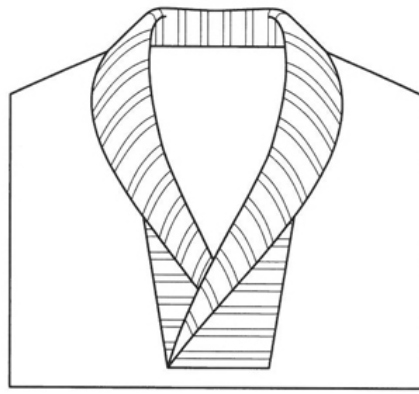
back with topstitched section



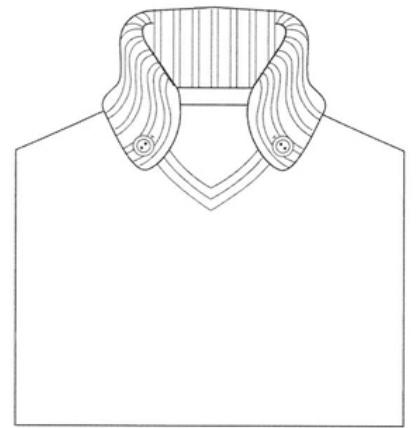
ribbed stand collar with topstitched section and concealed placket



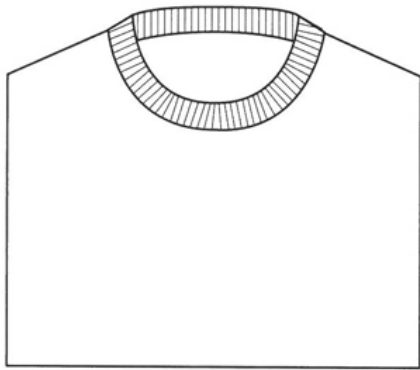
short shawl collar



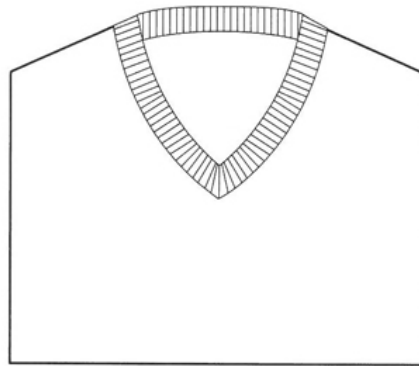
overlapping shawl collar



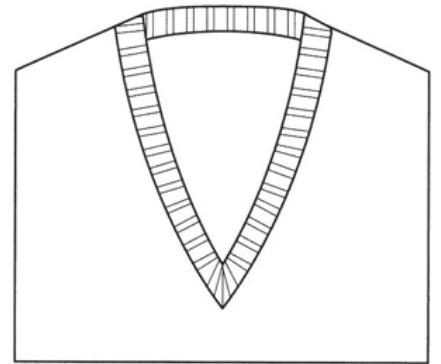
ribbed button-down collar



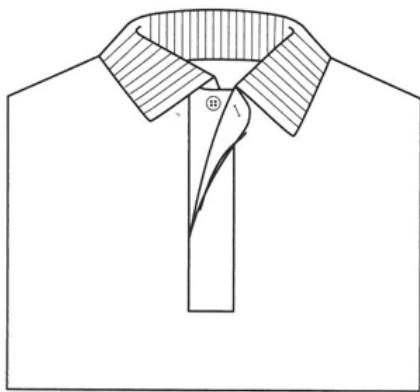
round neck



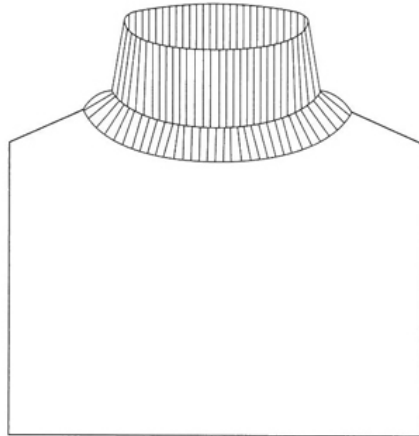
standard V-neck



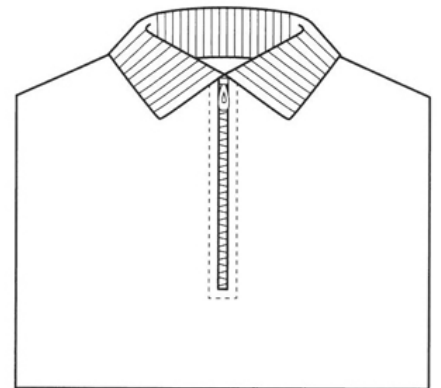
deep V-neck



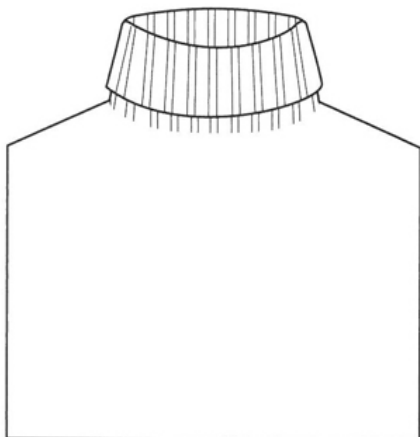
polo shirt collar with concealed placket



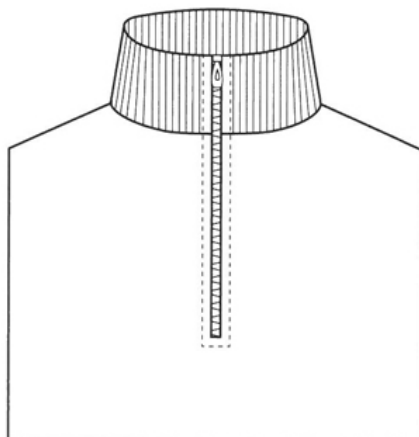
turtleneck



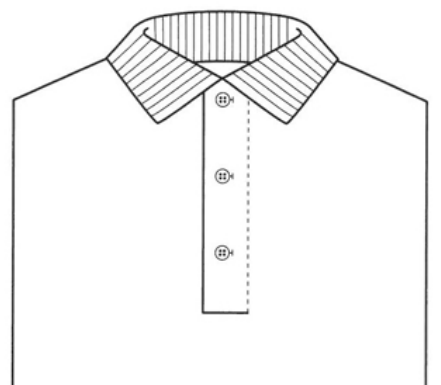
polo shirt collar with zip



roll collar



funnel neck with zip



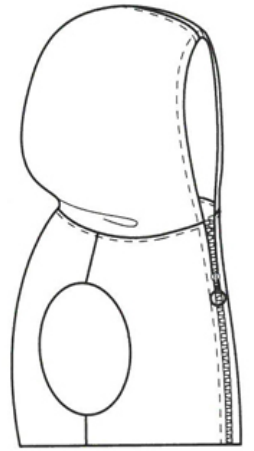
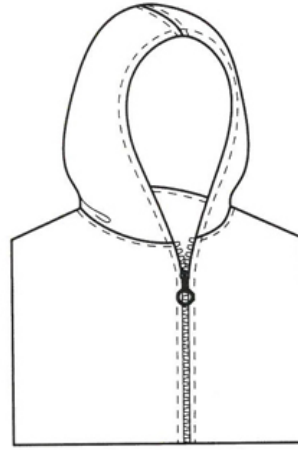
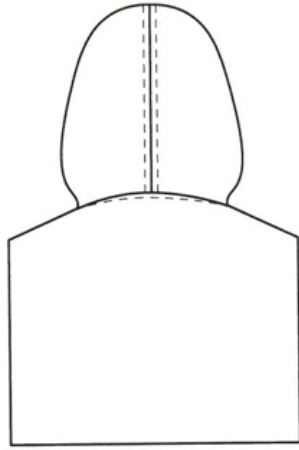
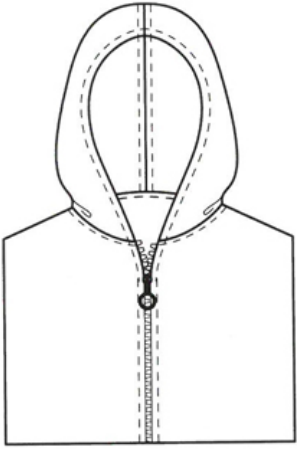
classic polo shirt collar with three buttons

front view

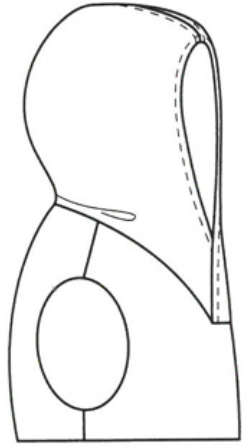
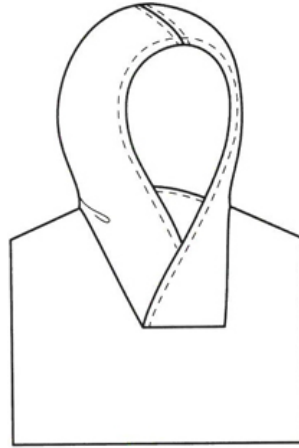
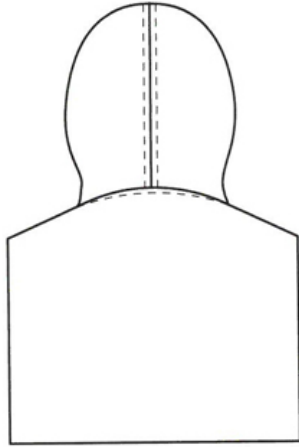
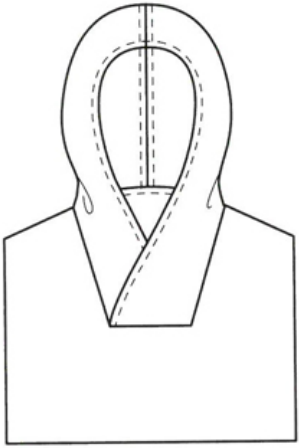
back view

three-quarter view

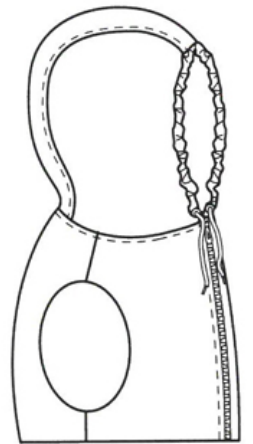
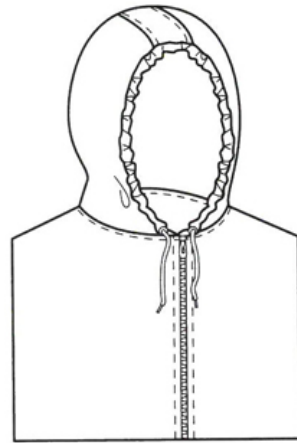
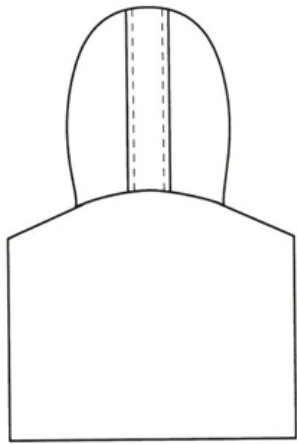
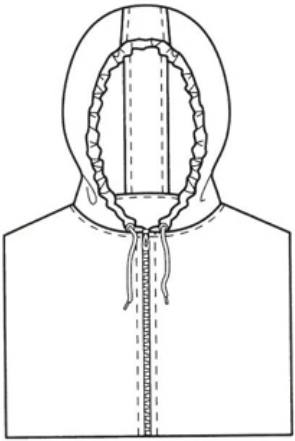
profile



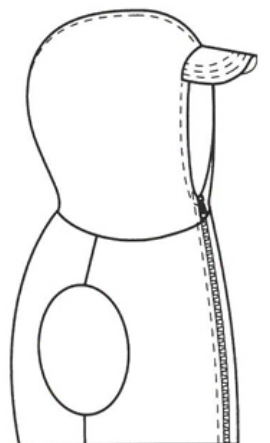
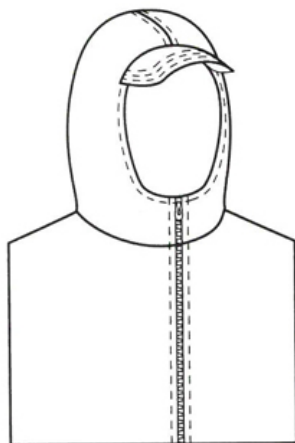
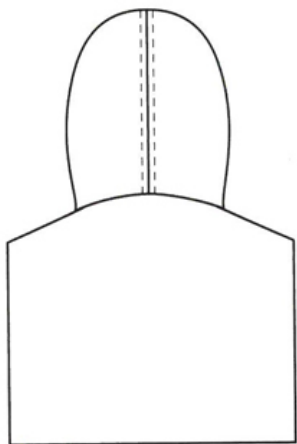
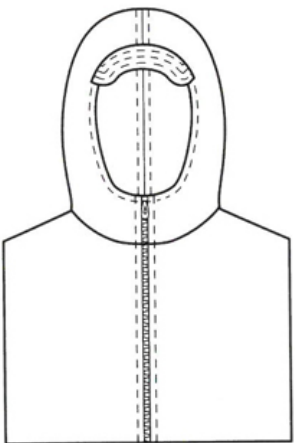
hood with zip



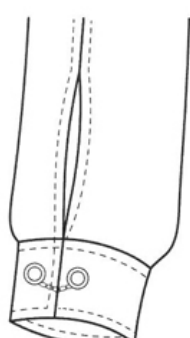
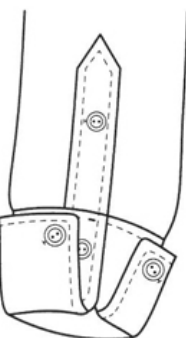
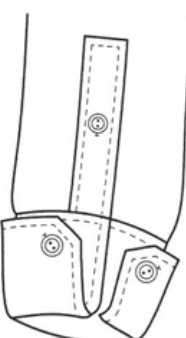
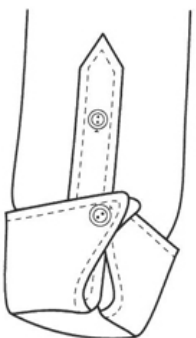
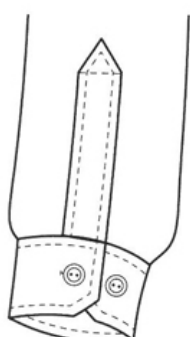
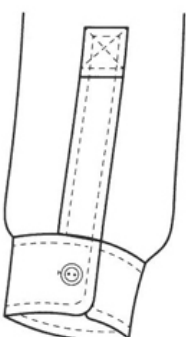
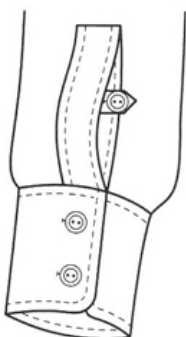
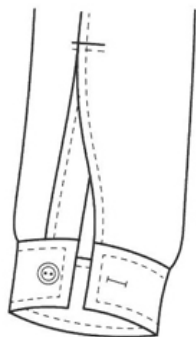
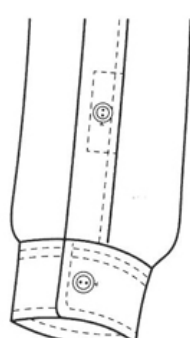
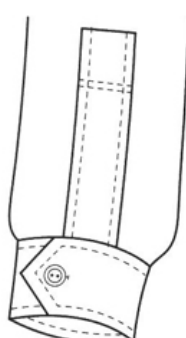
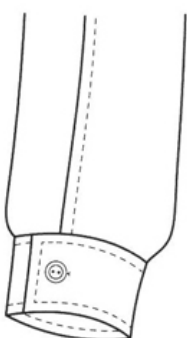
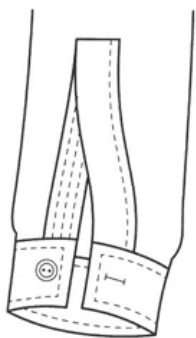
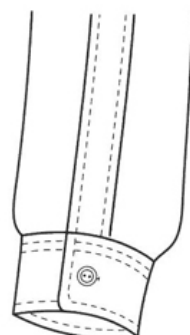
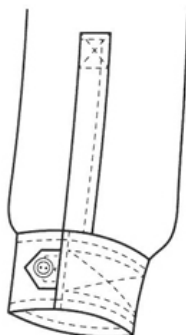
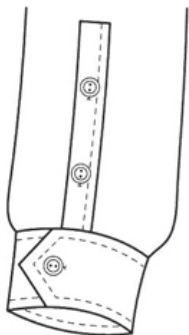
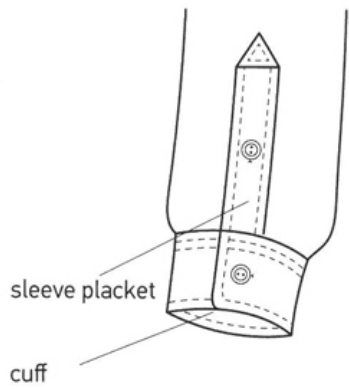
hood with wrap

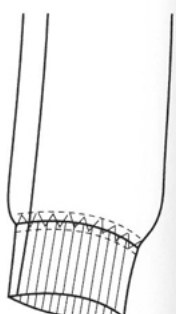
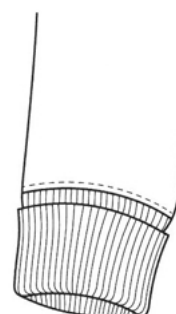
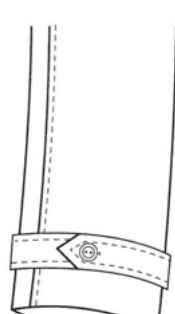
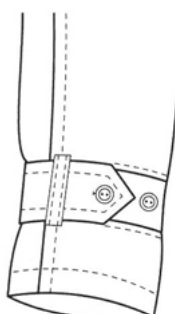
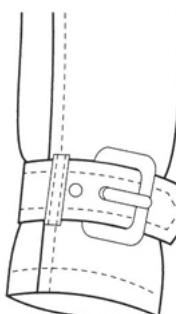
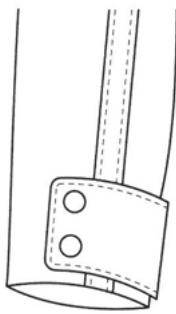
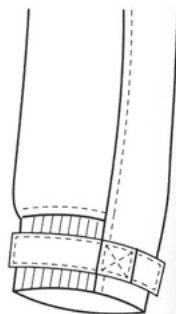
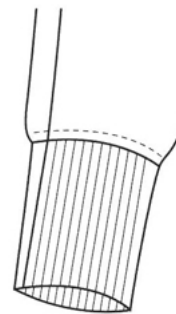
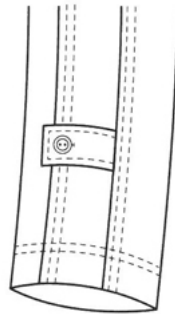
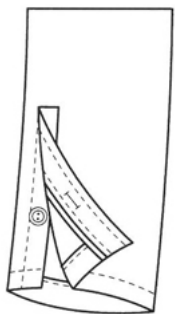
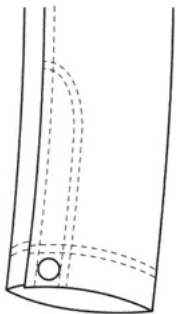
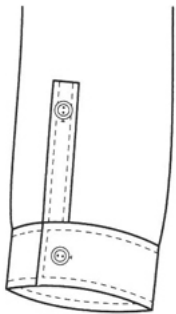
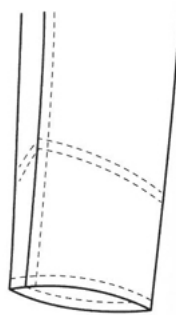
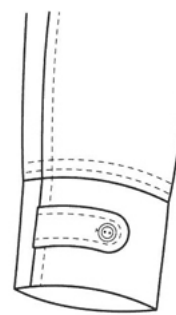
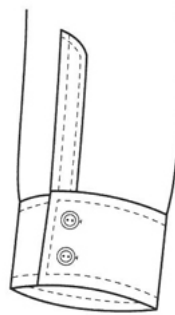
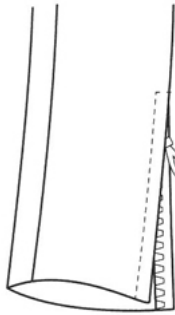
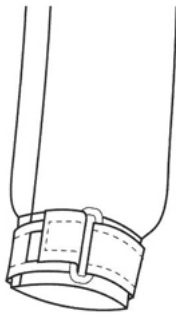
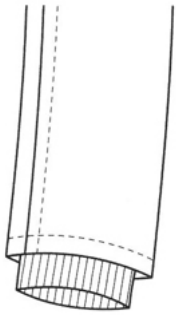
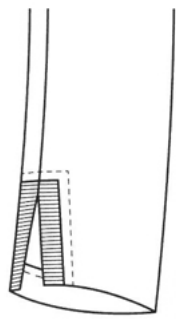
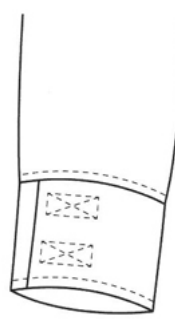
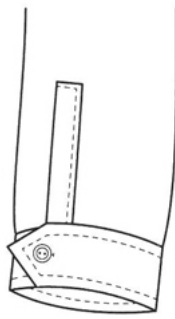
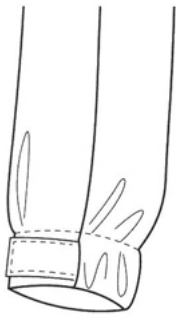
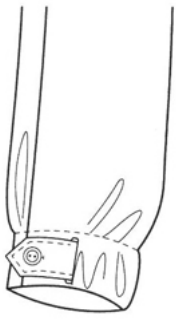


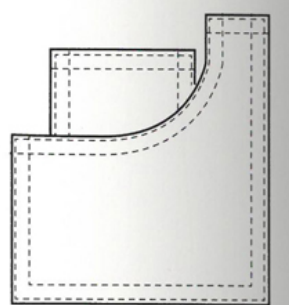
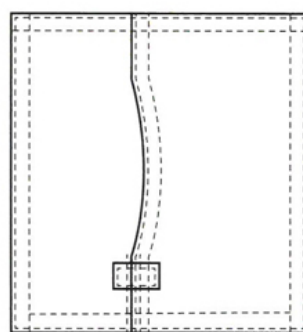
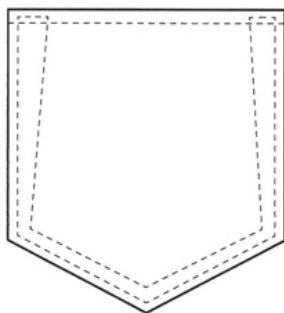
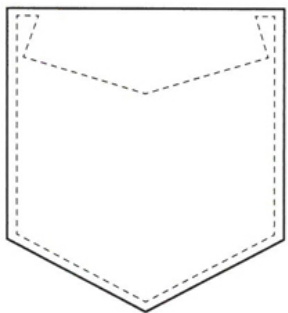
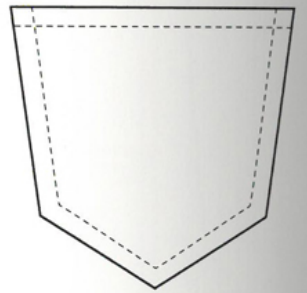
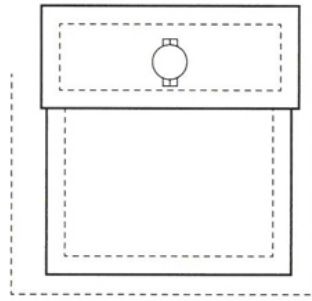
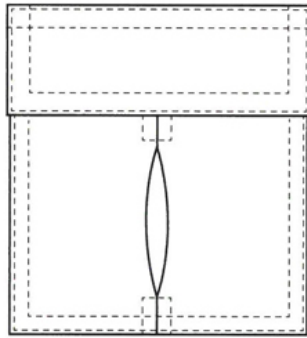
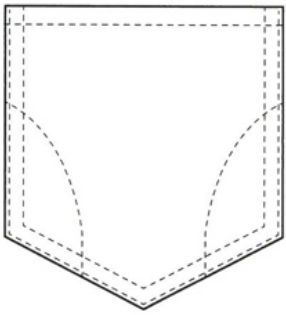
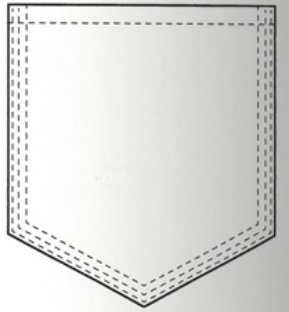
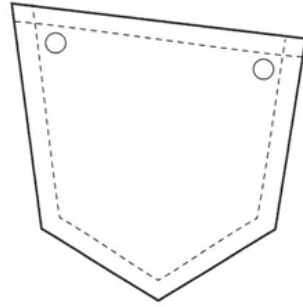
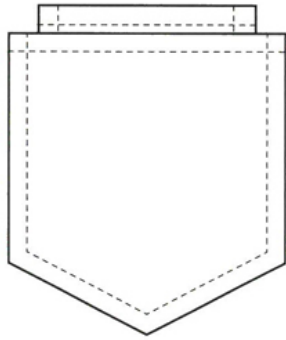
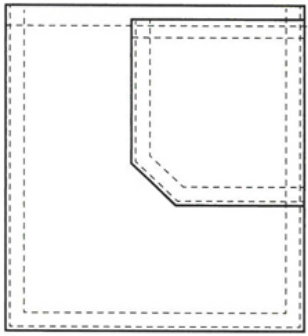
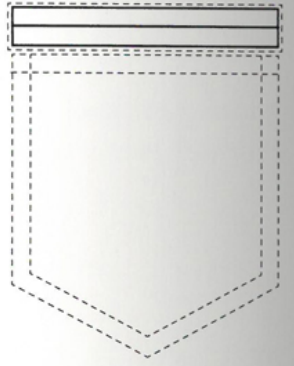
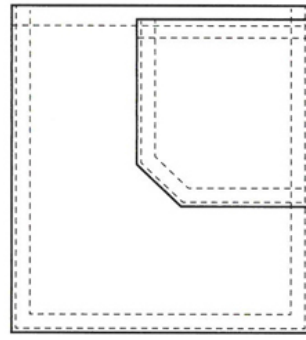
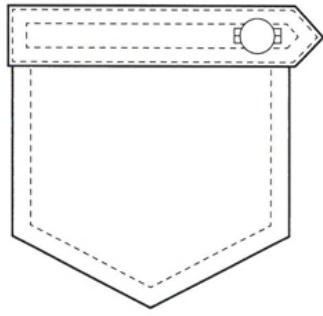
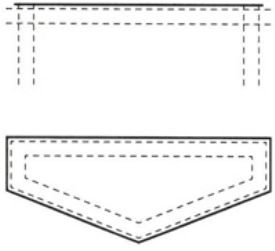
hood with drawstring

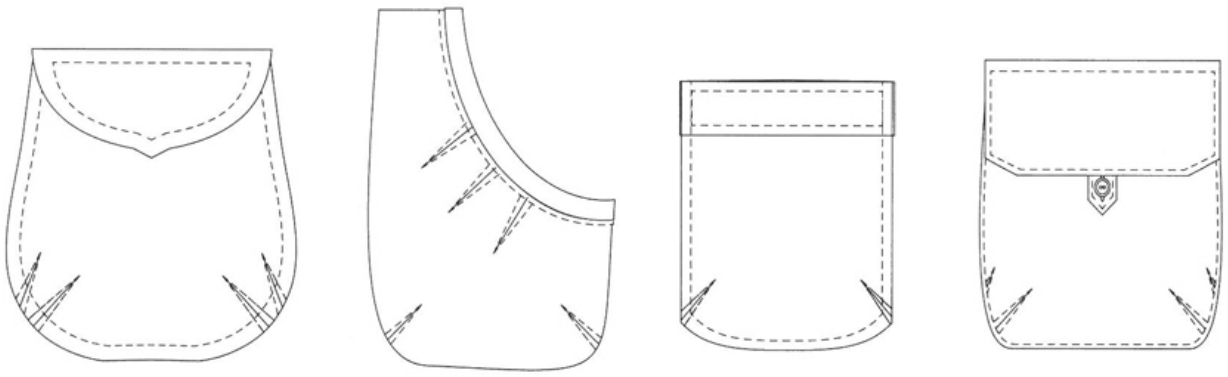


hood with cap

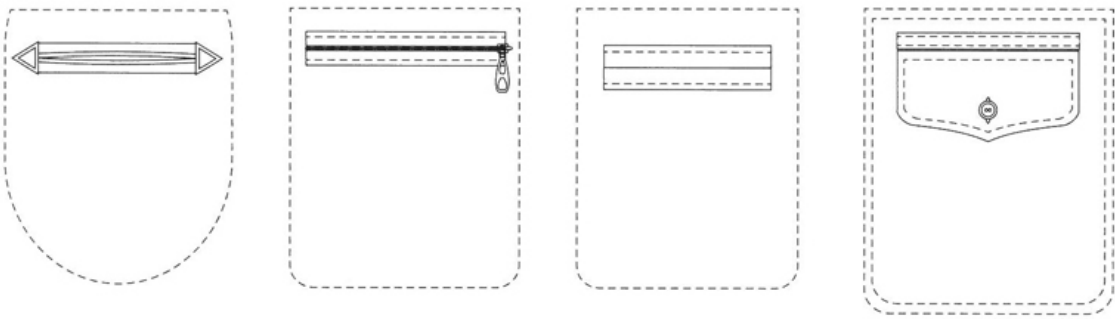
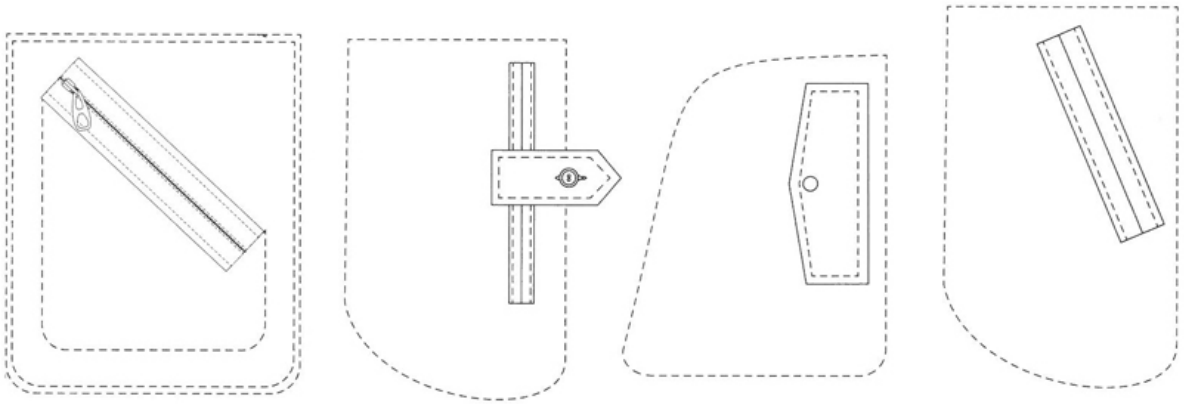




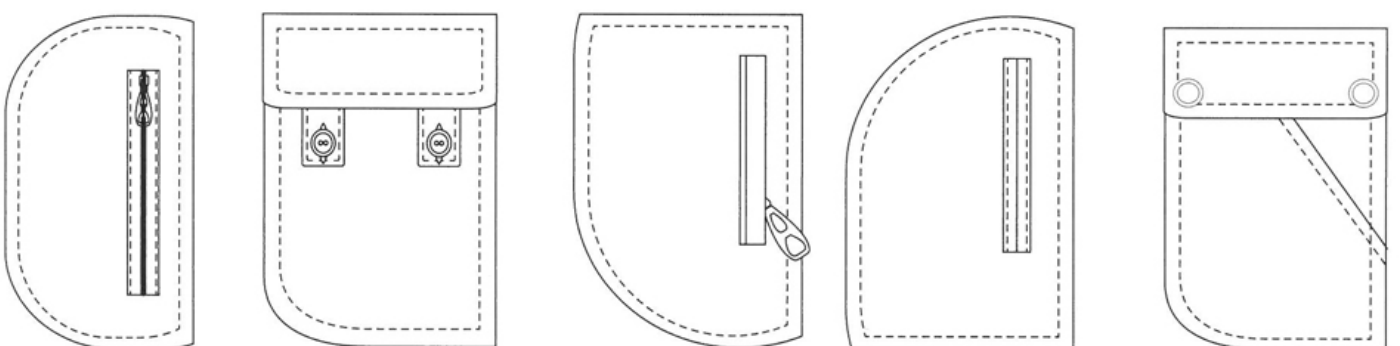
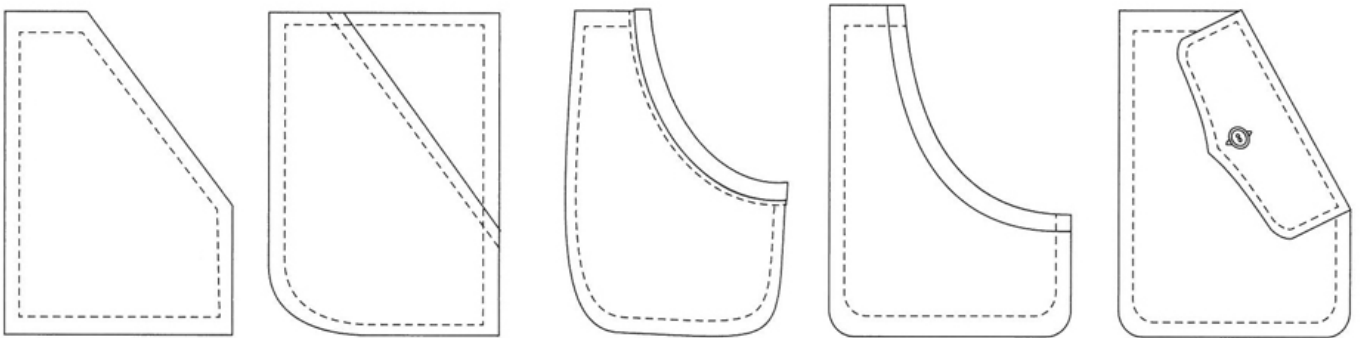




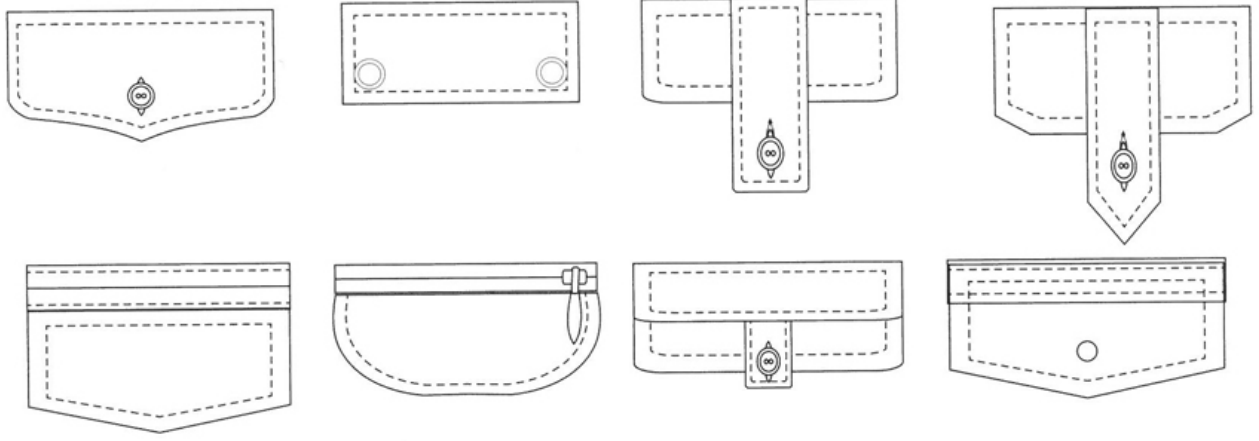
patch pockets with darts



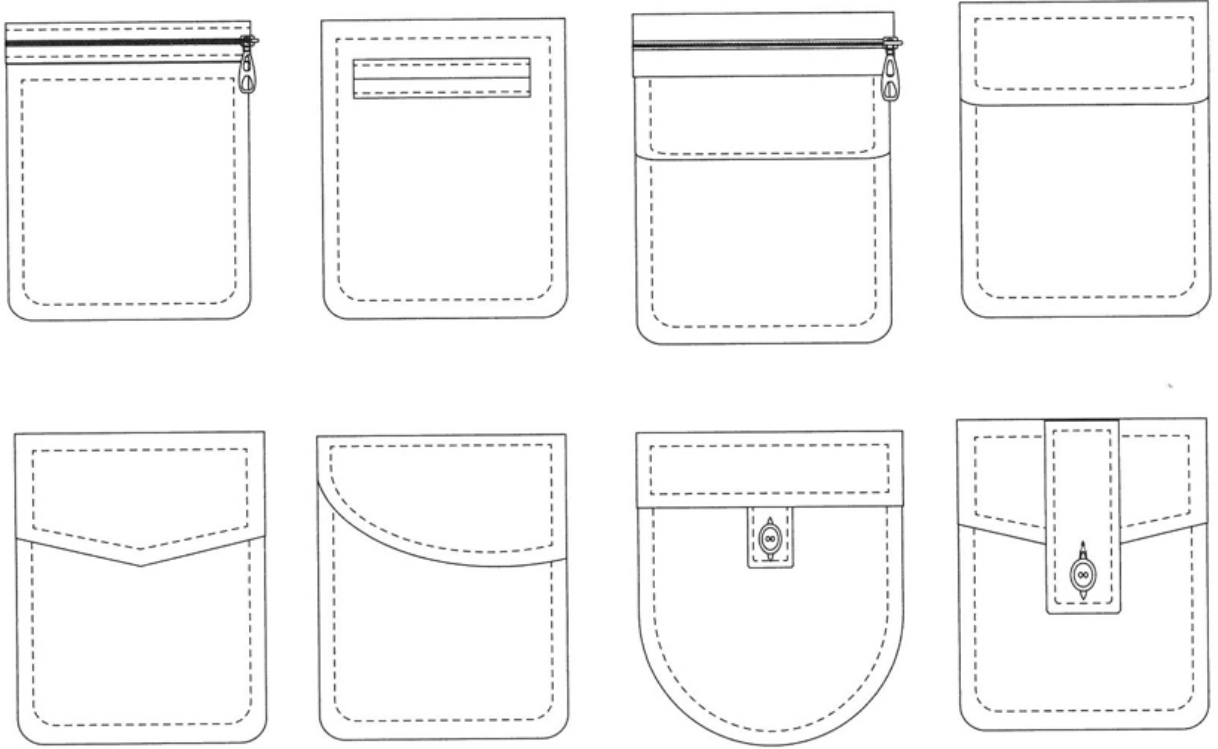
inside pockets with topstitching to show the shape of the pocket



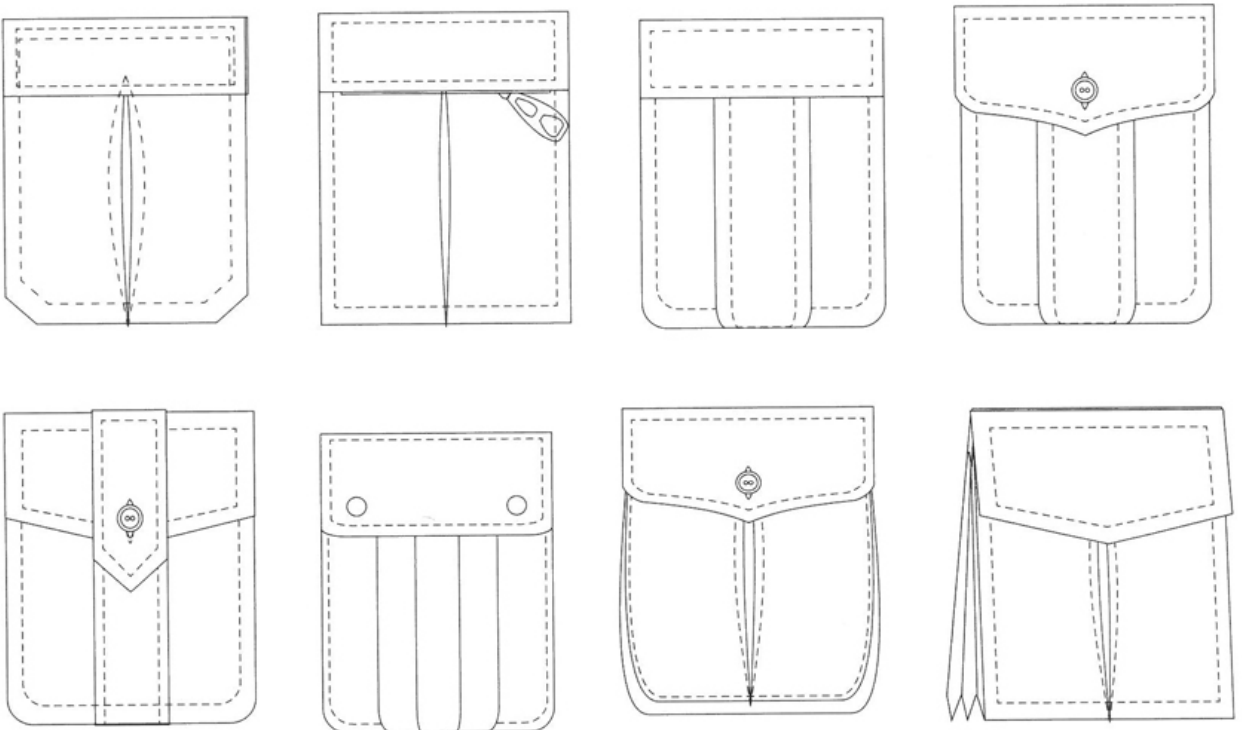
asymmetric topstitched patch pockets



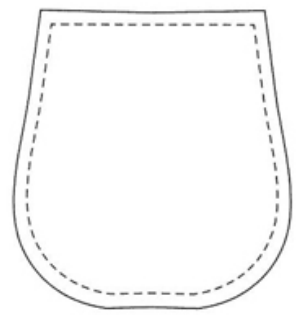
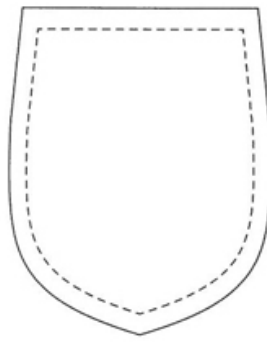
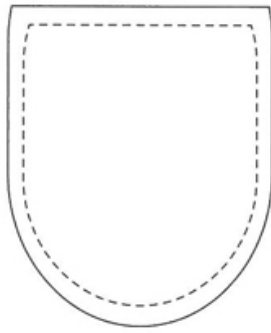
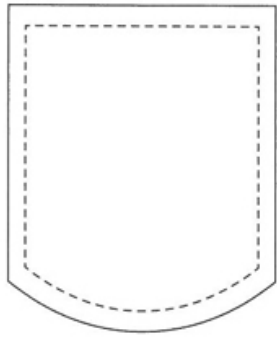
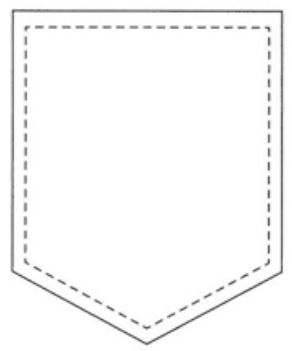
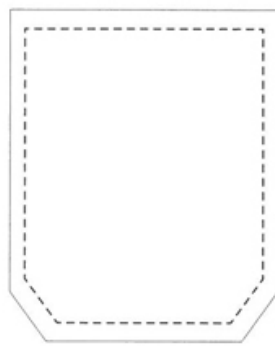
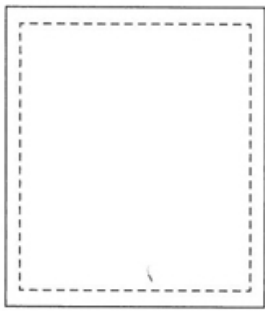
pocket flaps with buttons, tabs and zips



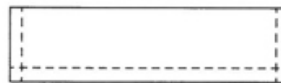
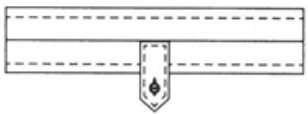
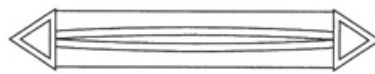
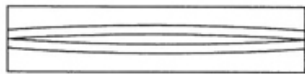
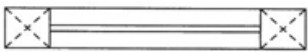
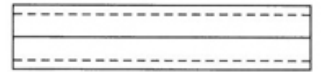
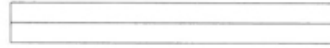
patch pockets with zips, flaps, buttons and tabs



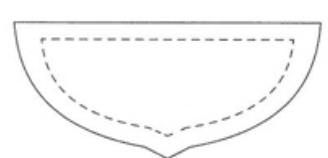
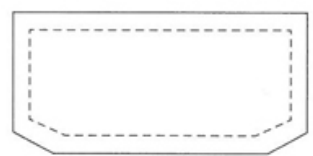
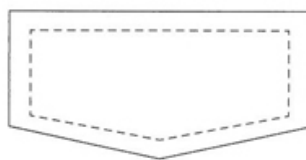
patch pockets with inverted and regular box pleats, flaps, zips, buttons and accordion pleats on the side



patch pockets

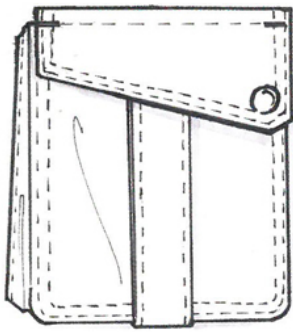


jetted and welt pockets

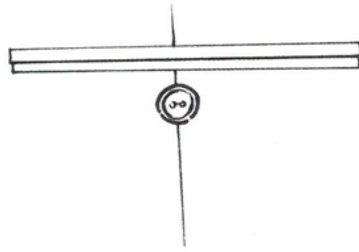


pocket flaps

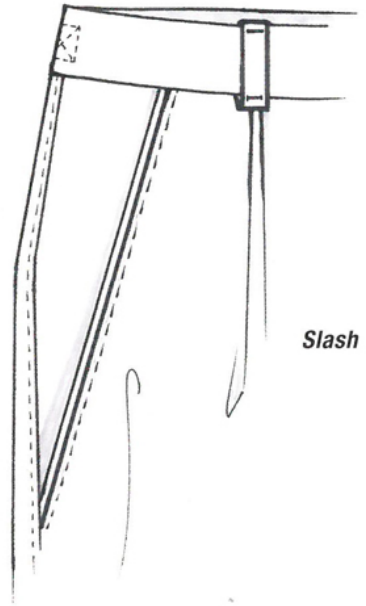
POCKETS



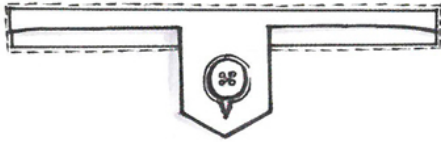
Bellows



Button-through double welt/besom



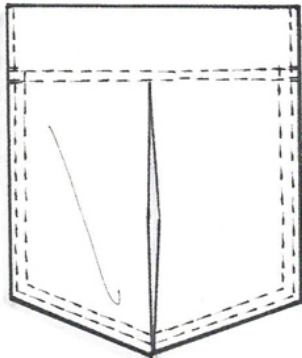
Slash



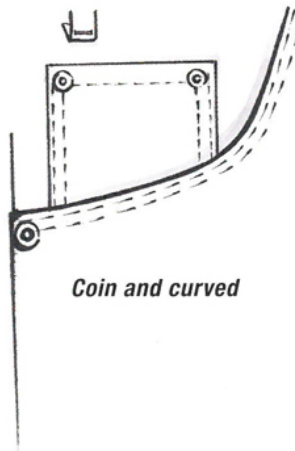
Welt with tab



Smile/Crescent



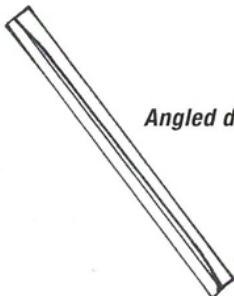
Patch



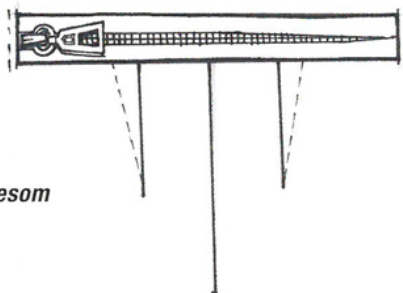
Coin and curved



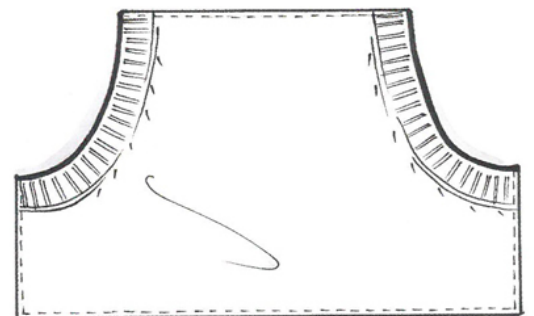
Onseam



Angled double-welt/besom

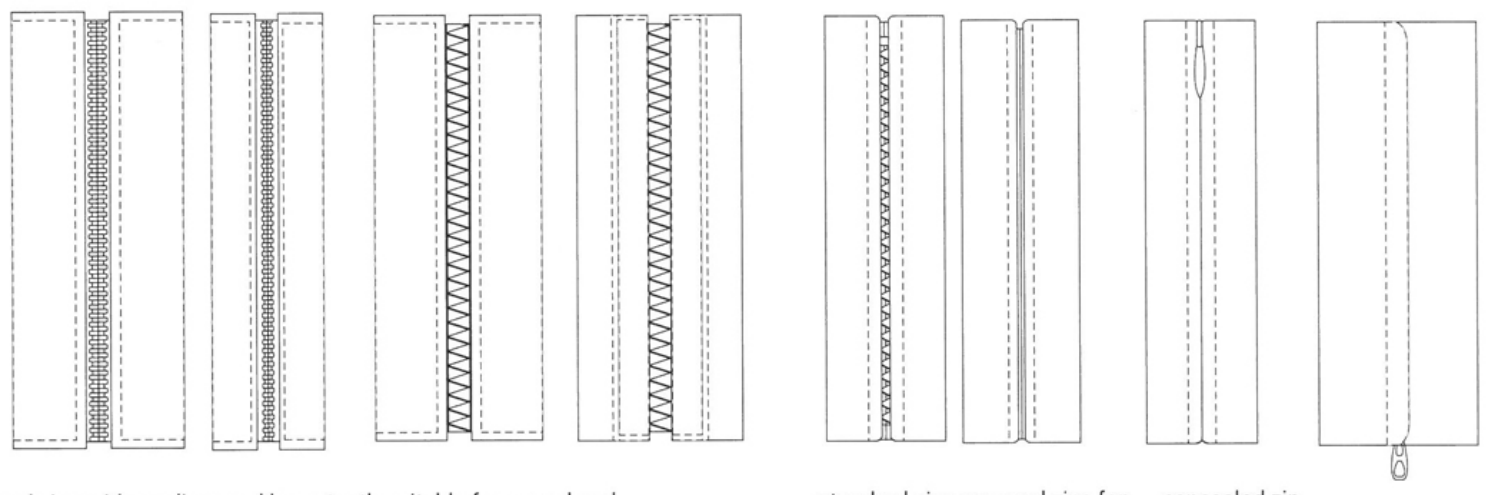


Zipper



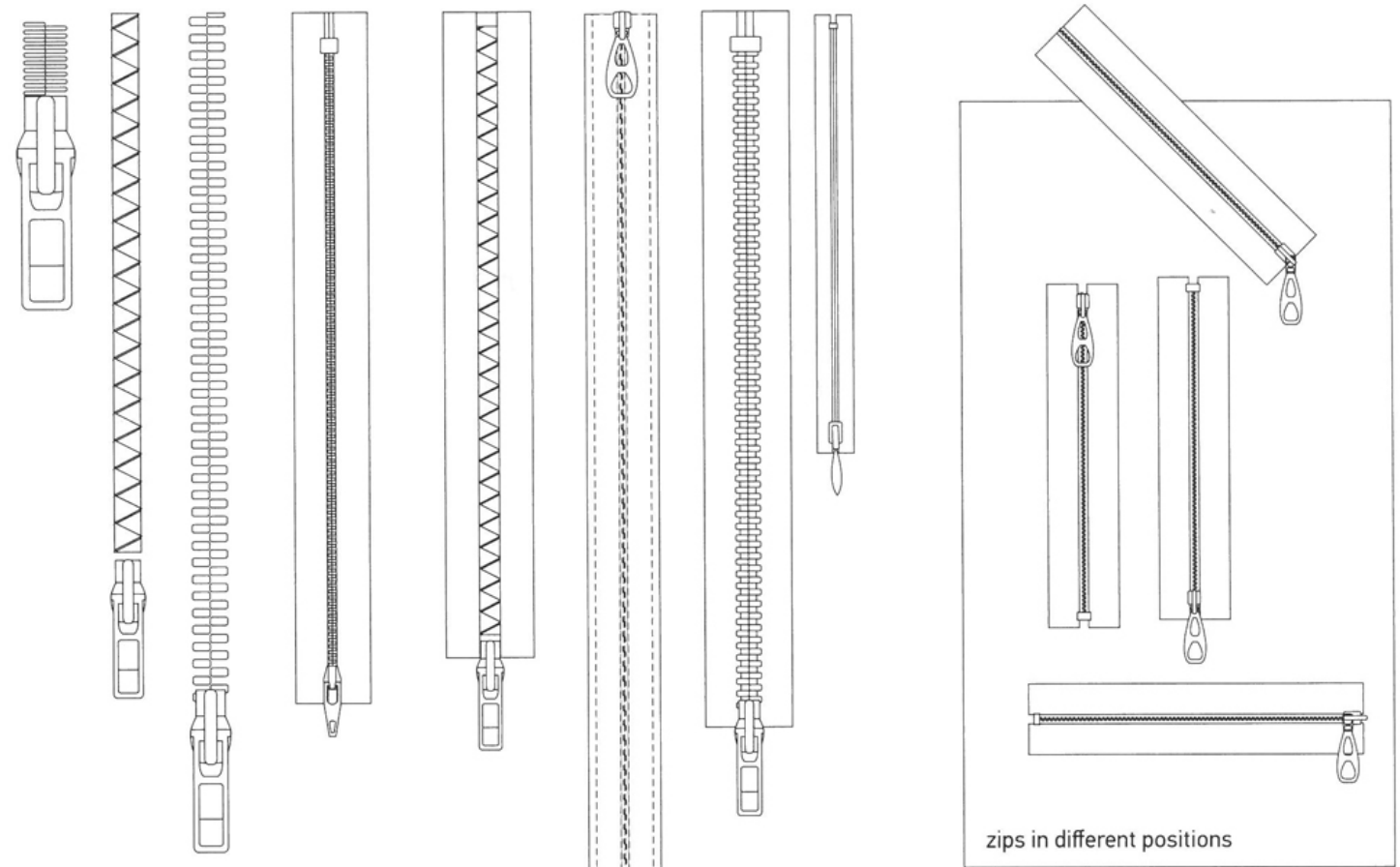
Kangaroo

Fasteners

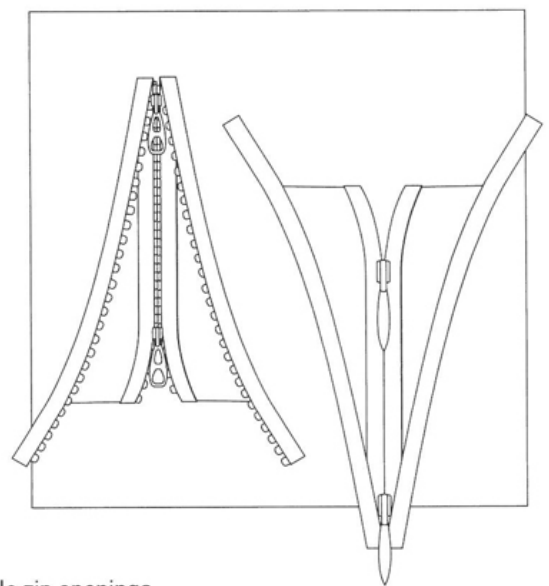


exposed zips with medium and large teeth suitable for casual and sportswear

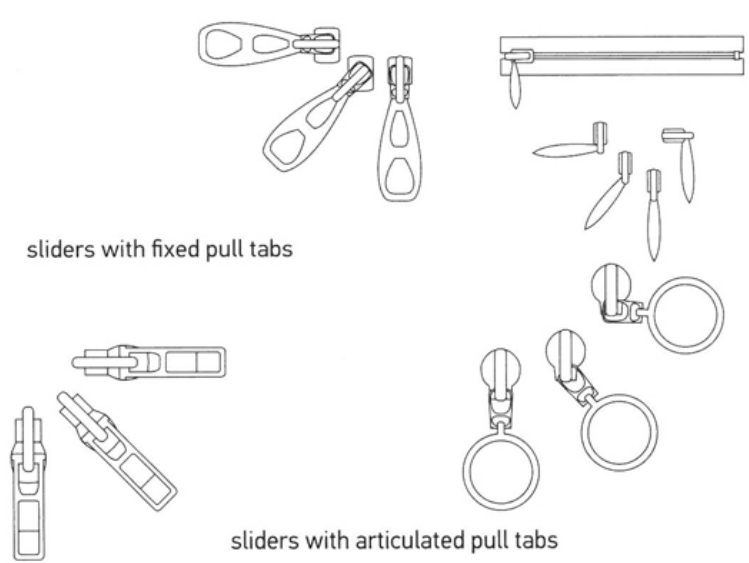
standard size exposed zips for classic clothing concealed zip covered zip



zips in different positions

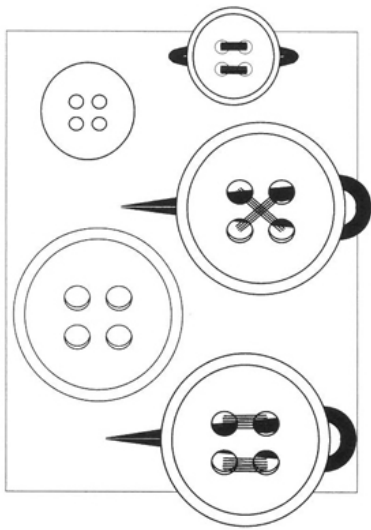


double zip openings

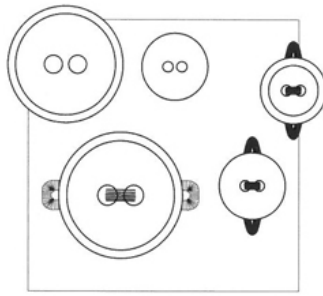


sliders with fixed pull tabs

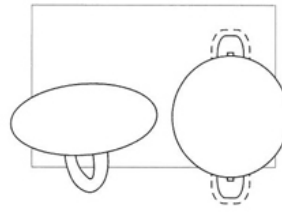
sliders with articulated pull tabs



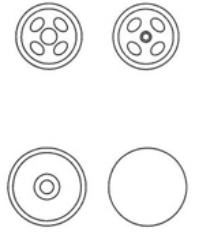
four hole buttons



two hole buttons



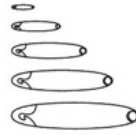
shank buttons



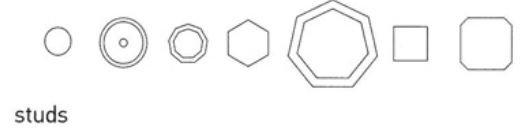
press studs



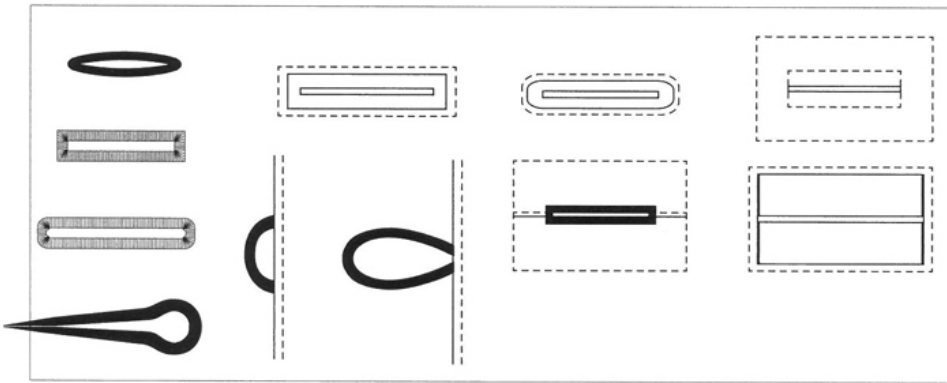
jewel button



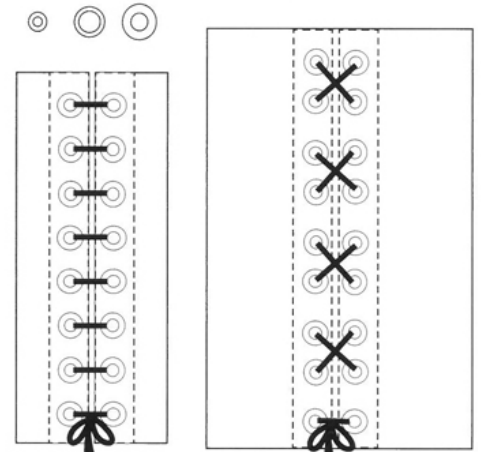
safety pins



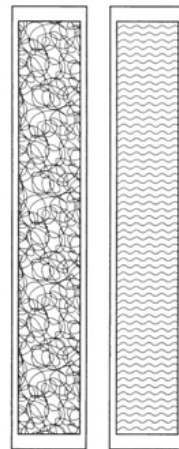
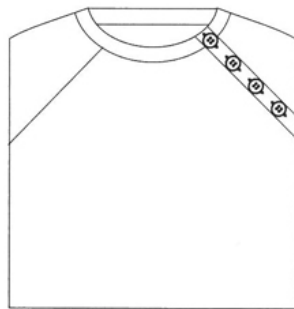
studs



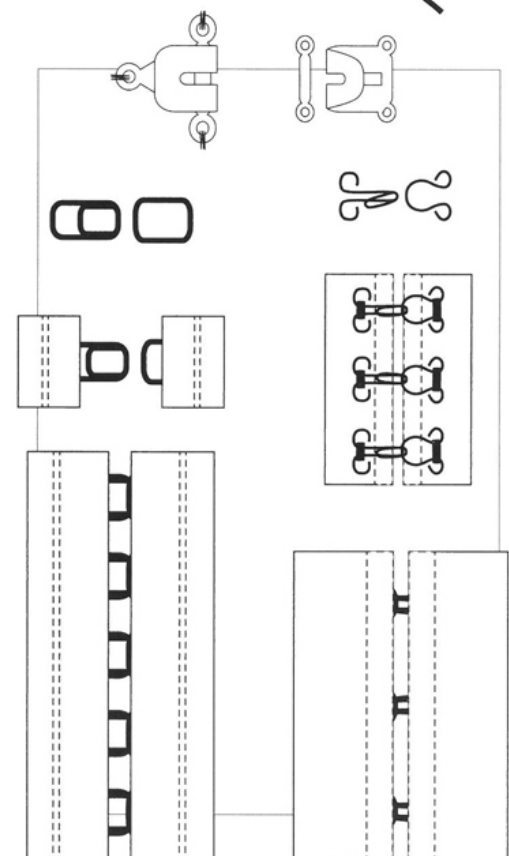
various types of buttonholes



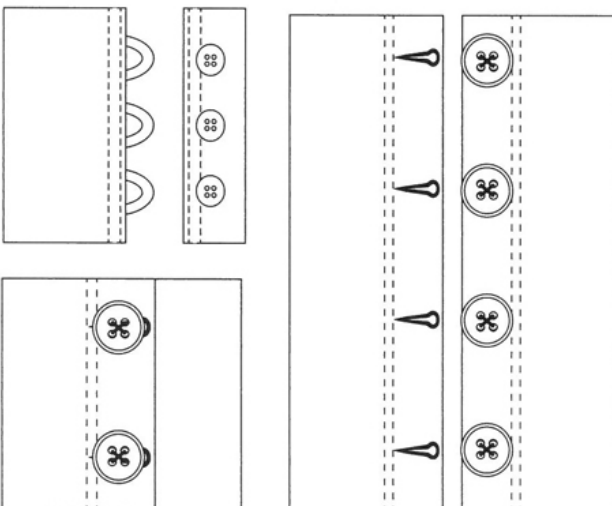
eyelets



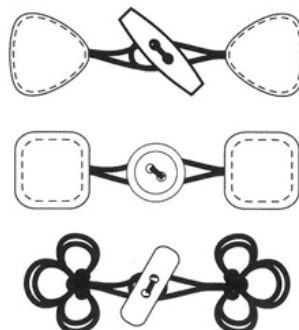
Velcro



hook-and-eye fasteners



different types of buttoning



toggles

Zdroje obrázků

publikace

[1] FASHION DRAWING, Michele Wesen Bryant ISBN 978 1 78067 834 4

[2] Figure Drawing for Men's Fashion, Elisabetta Drudi ISBN 9054961554