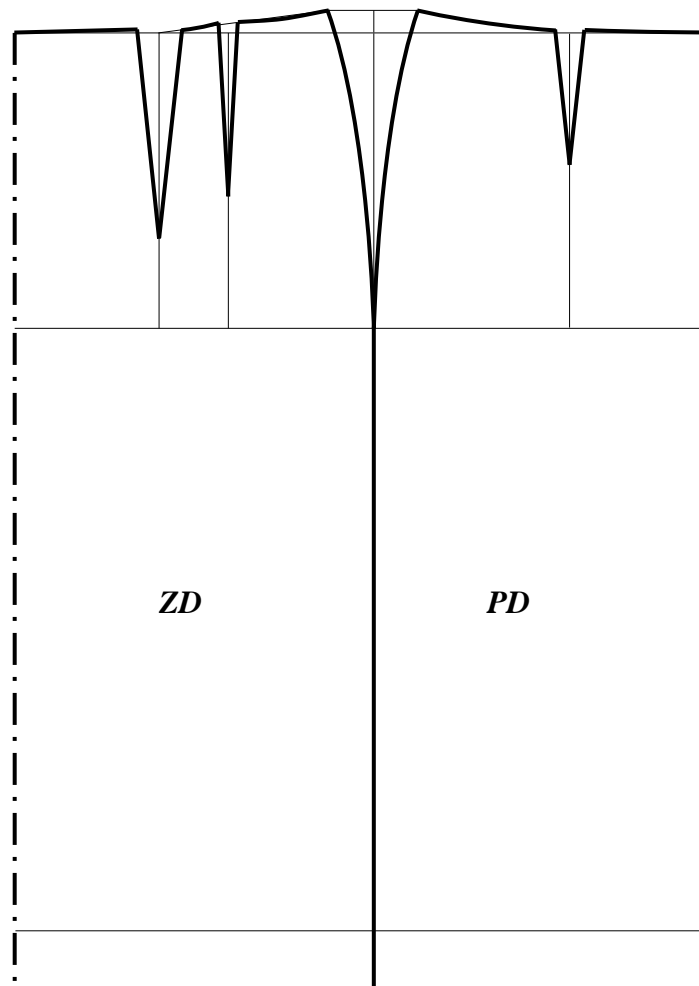




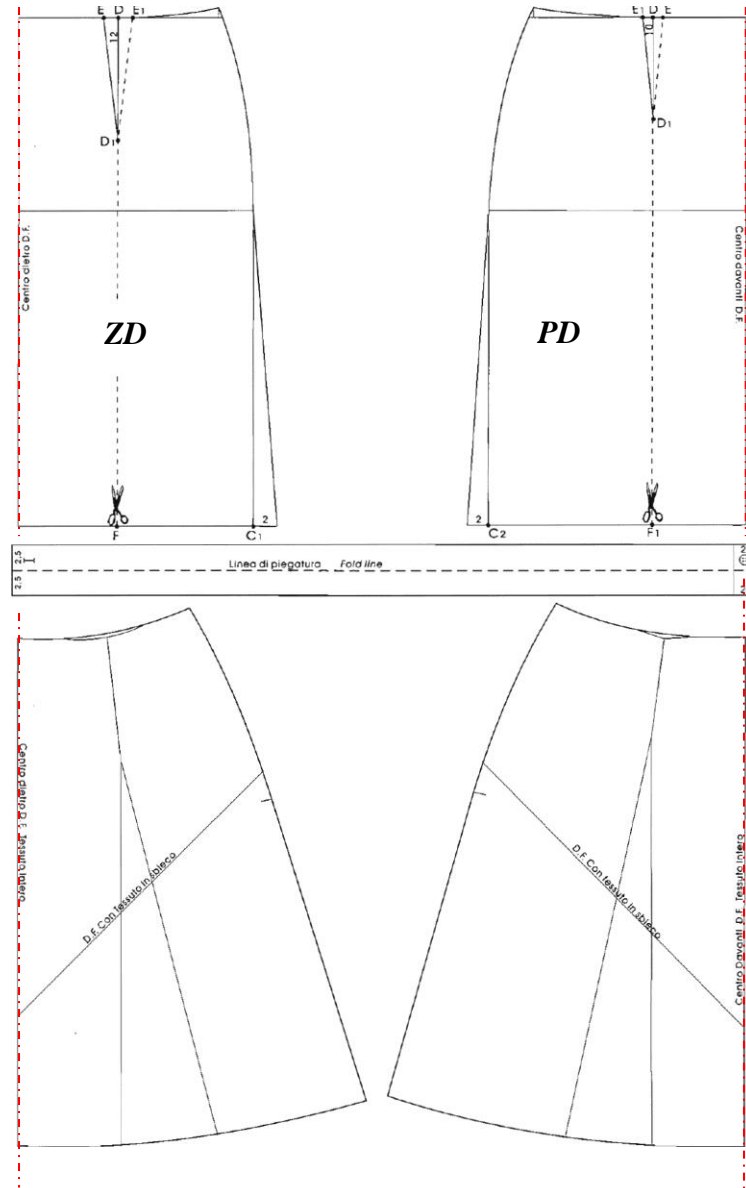
Vybrané stříhové manipulace dámské sukně

Stříhová konstrukce rovné sukně - základní tvar





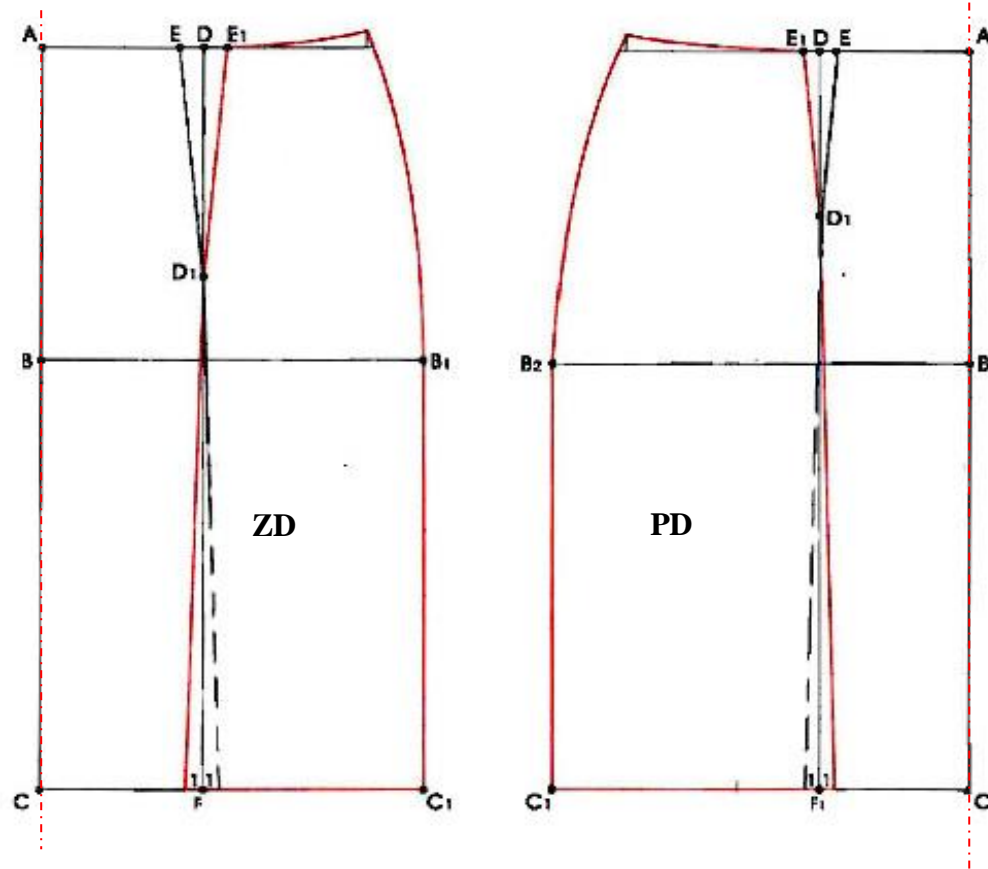
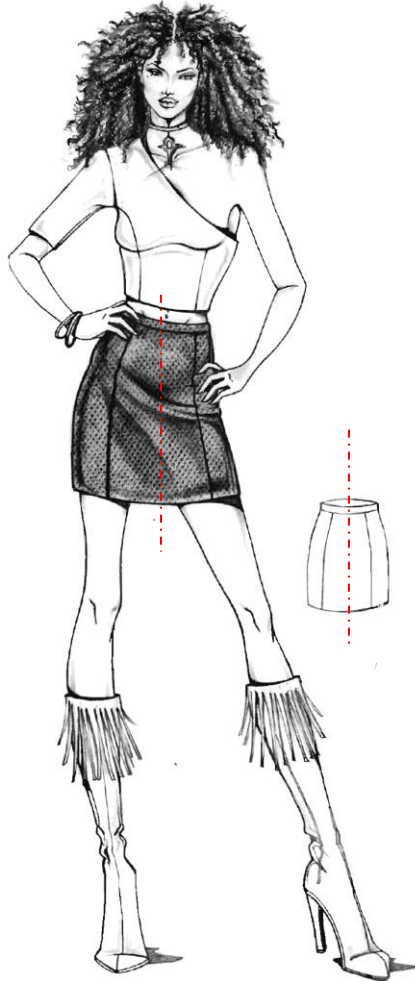
Zvonová sukně



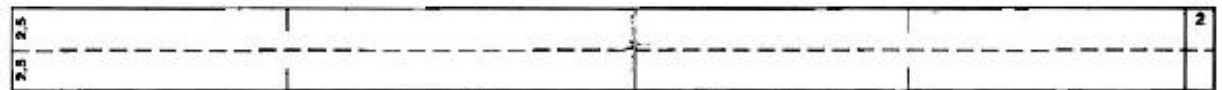
Lit. zdroj: Burgo, F. *Il Modellismo* „The pattern making book for the pattern makers“, Publisher: IST. DI MODA BURGO, Italian 2008, ISBN-10: 8890010150.



Podélně členěná sukně

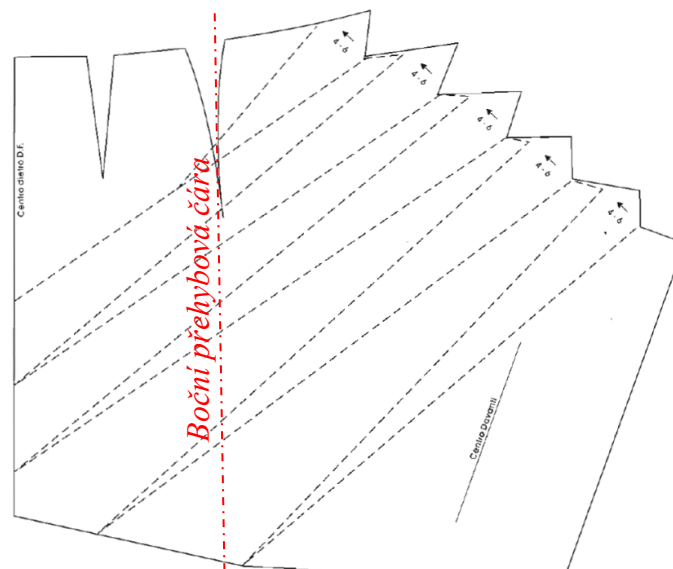
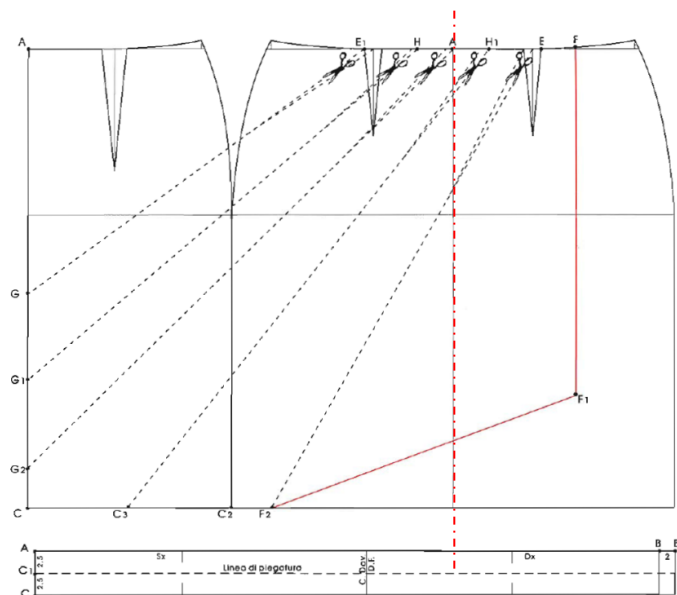
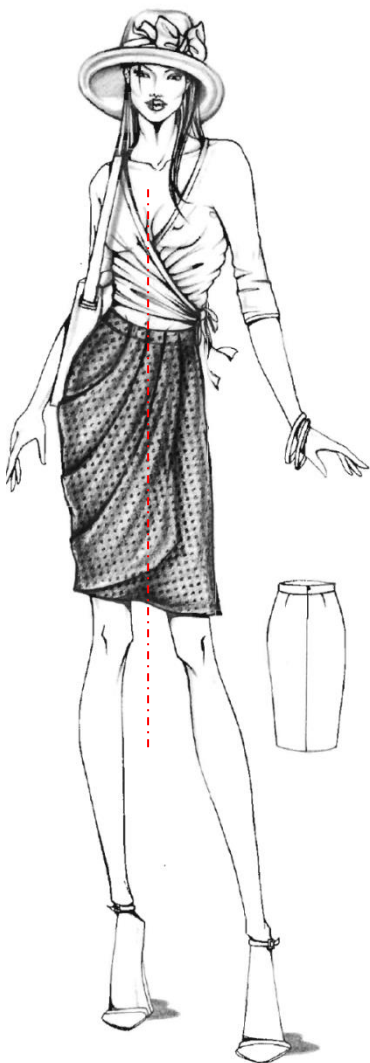


Pasový límec



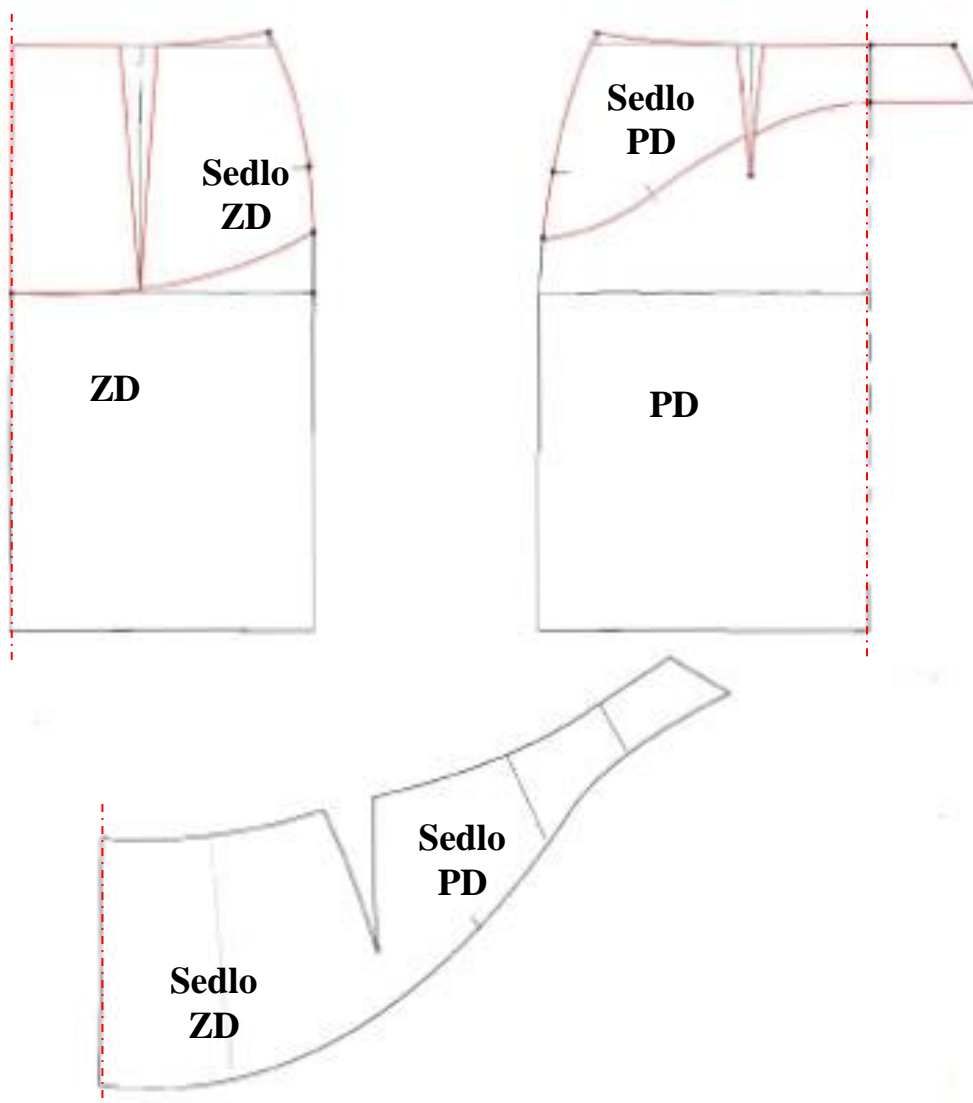


Asymetrická sukně s klínovými záhyby



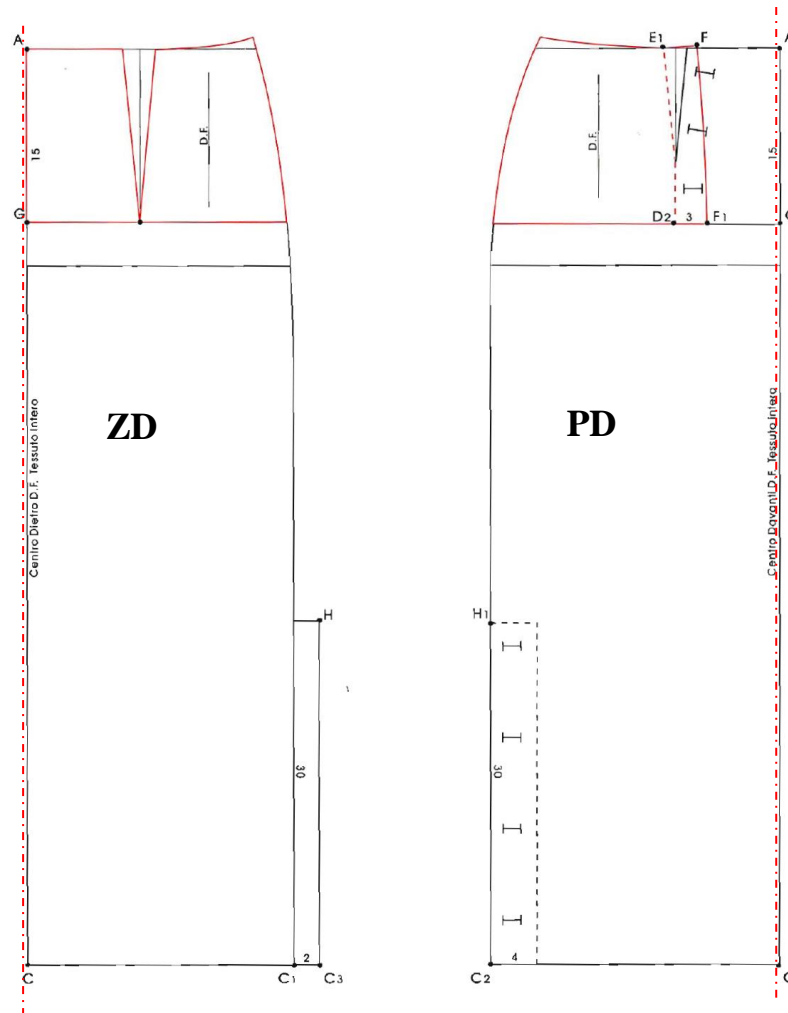


Sukně s tvarovaným sedlem





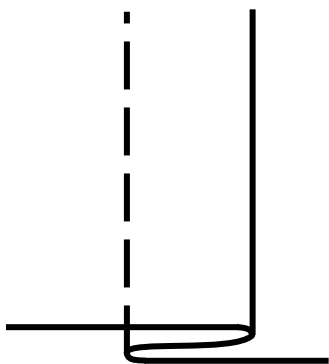
Dlouhá sukně se sedlem a rozparky na předním dílu sukně



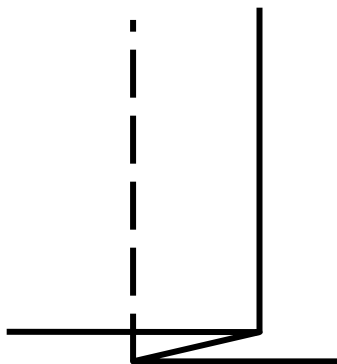


Záhyby: terminologie

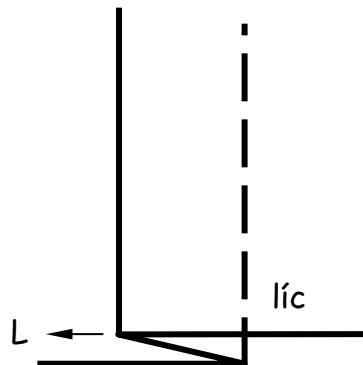
Ohyb oděvního materiálu



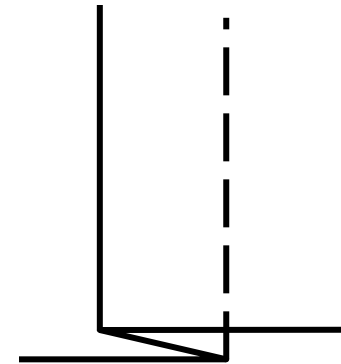
Přehyb oděvního materiálu



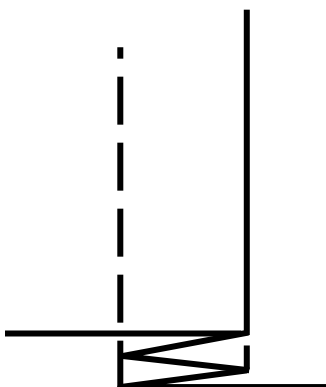
Jednostranný záhyb levostranný



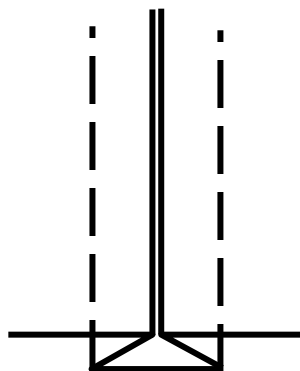
Rovný záhyb



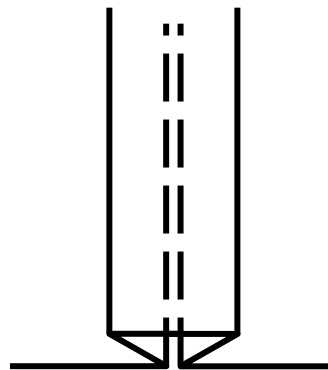
Dvojitý záhyb



Lícový protizáhyb



Rubový protizáhyb



Klínový záhyb

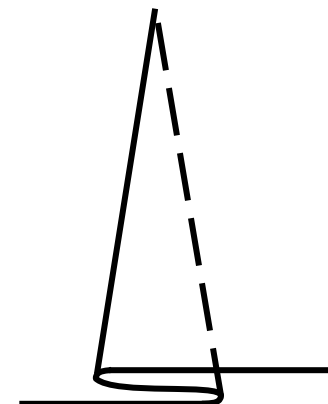
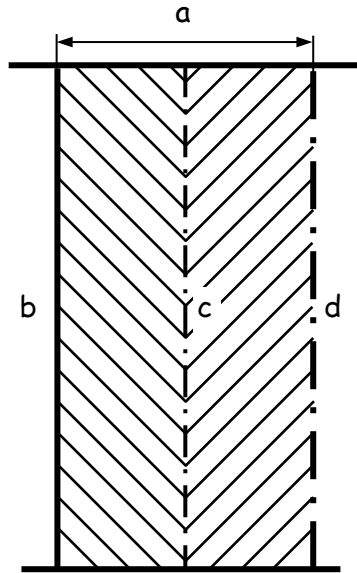




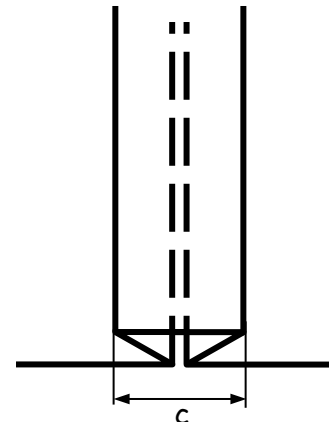
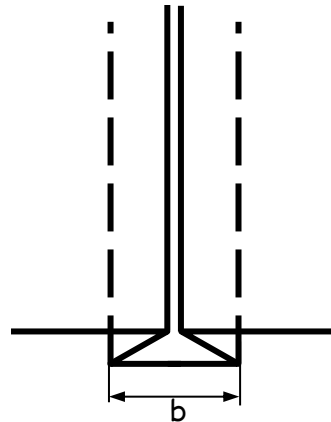
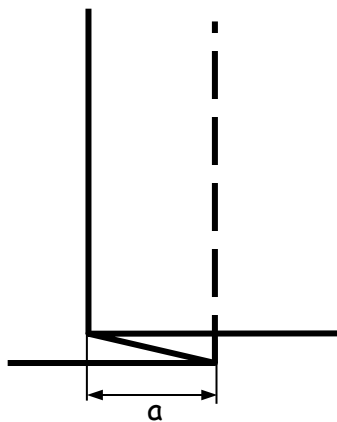
Schéma rozložení záhybu



- a) šířka záhybové plochy
- b) umístění záhybu
- c) rubový přehyb
- d) lícový přehyb

Šířka záhybu

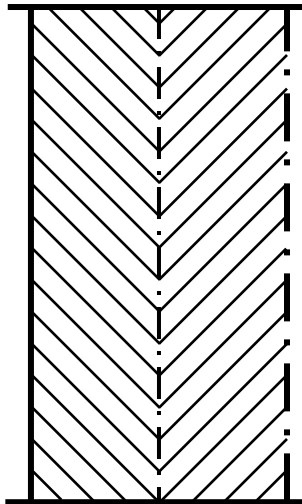
- a) jednosměrného
- b) lícového protizáhybu
- c) rubového protizáhybu



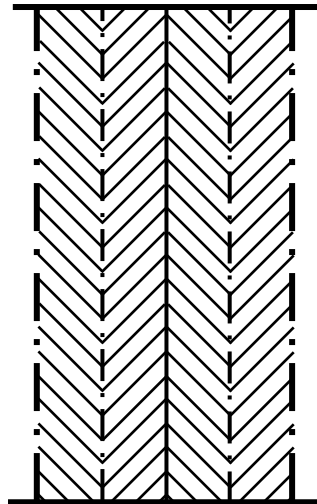


Zakreslení záhybů

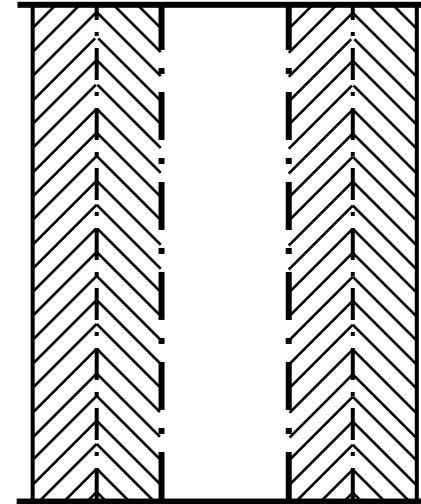
Zakreslení rovného
levosměrného záhybu



Zakreslení
lícového protizáhybu

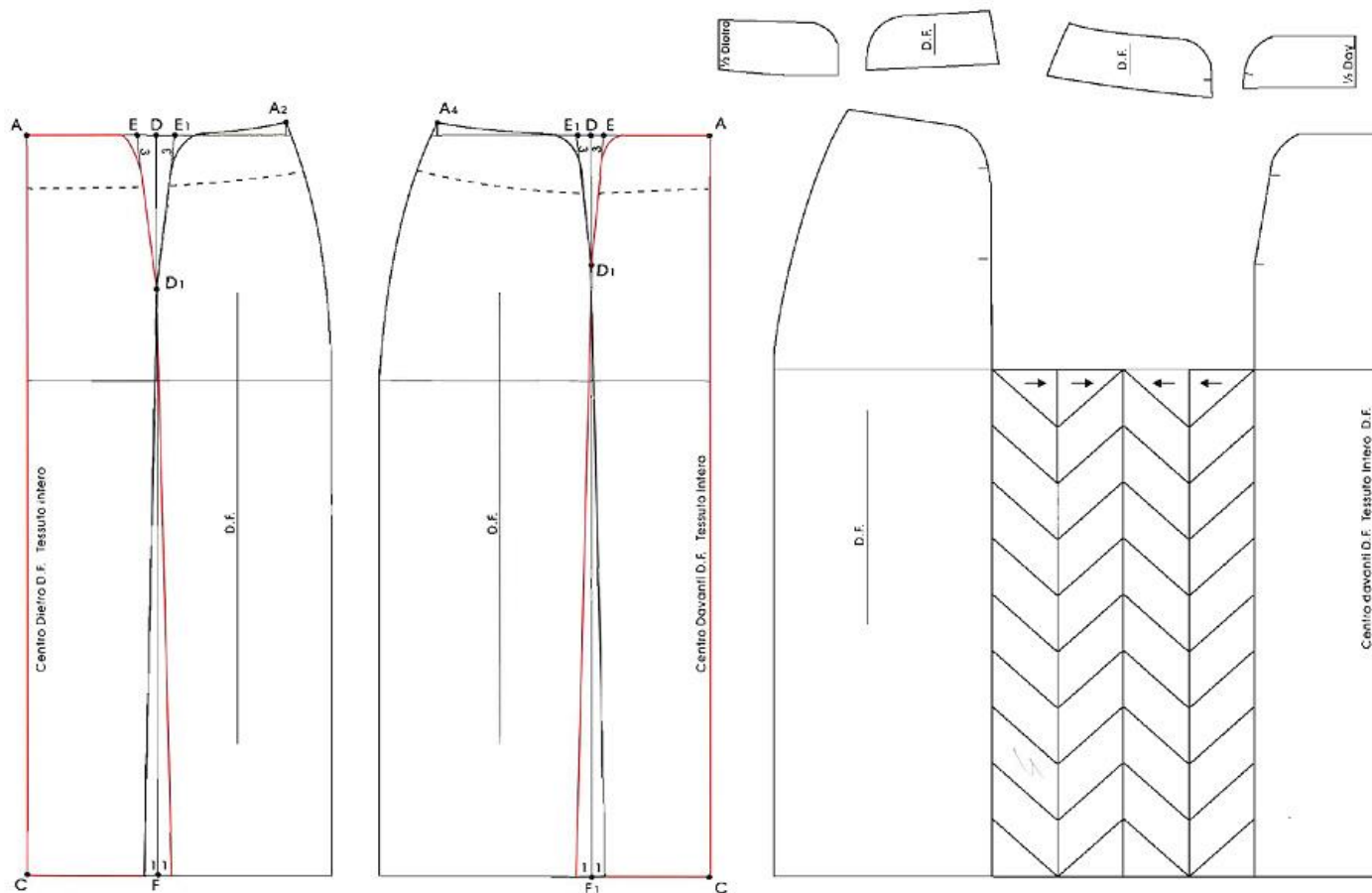


Zakreslení
rubového protizáhybu



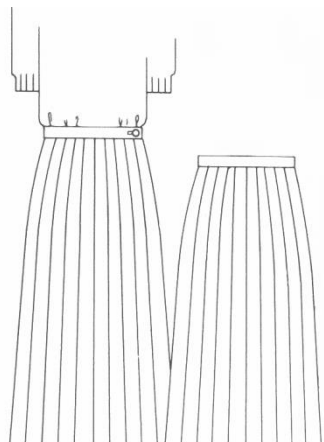


Sukně s protizáhyby na předním dílu



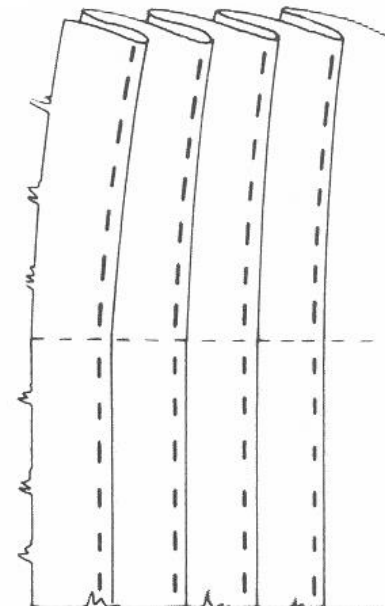
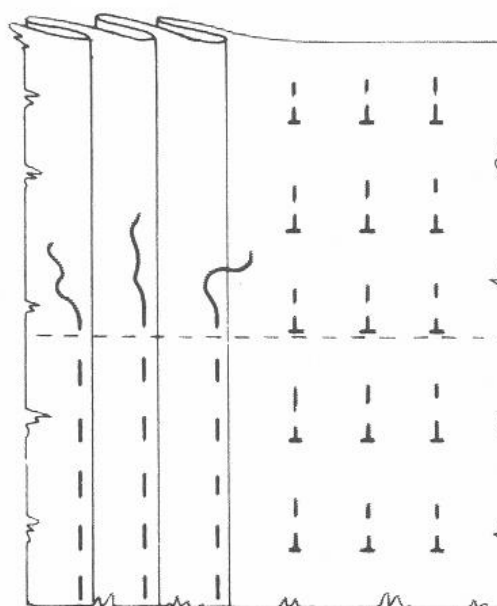
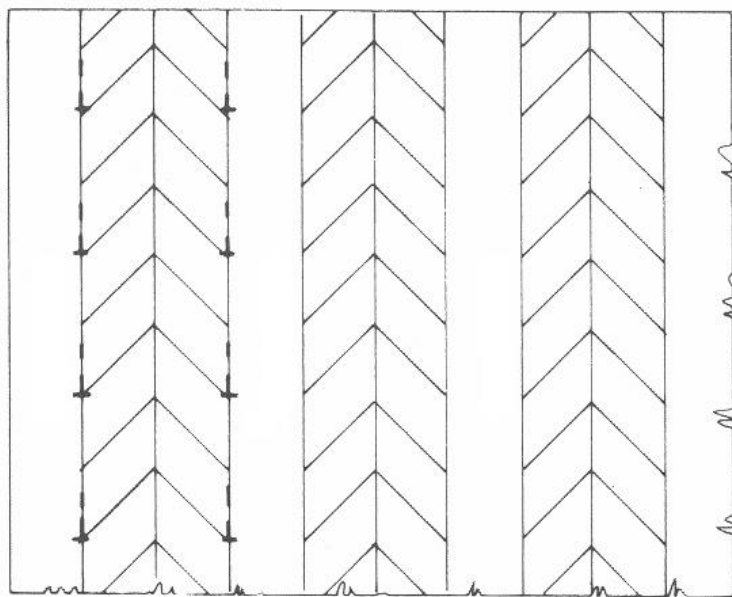


Sukně se záhyby po celém obvodu



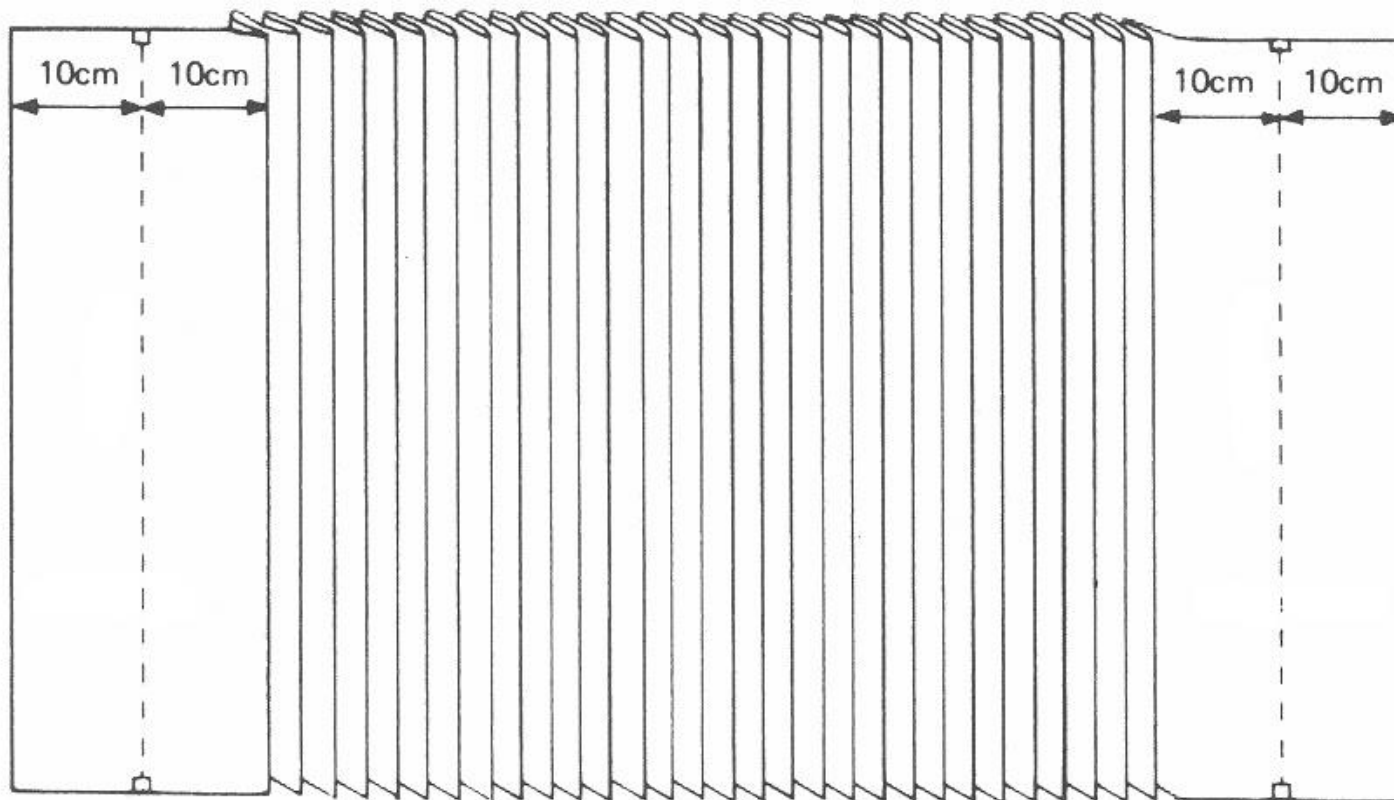
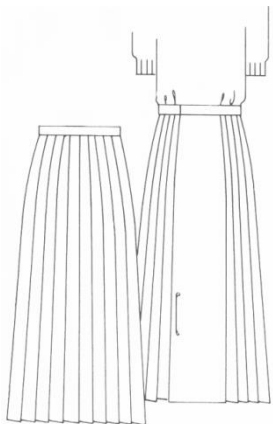
Pohled
zepředu

Pohled
zezadu



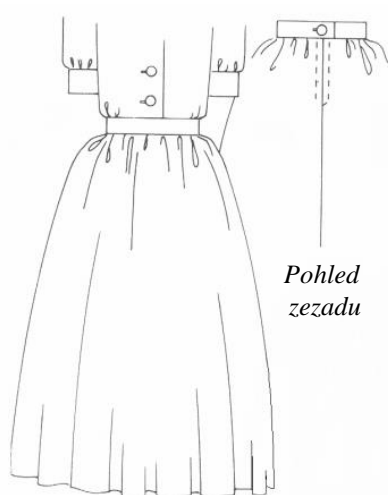


Kilt



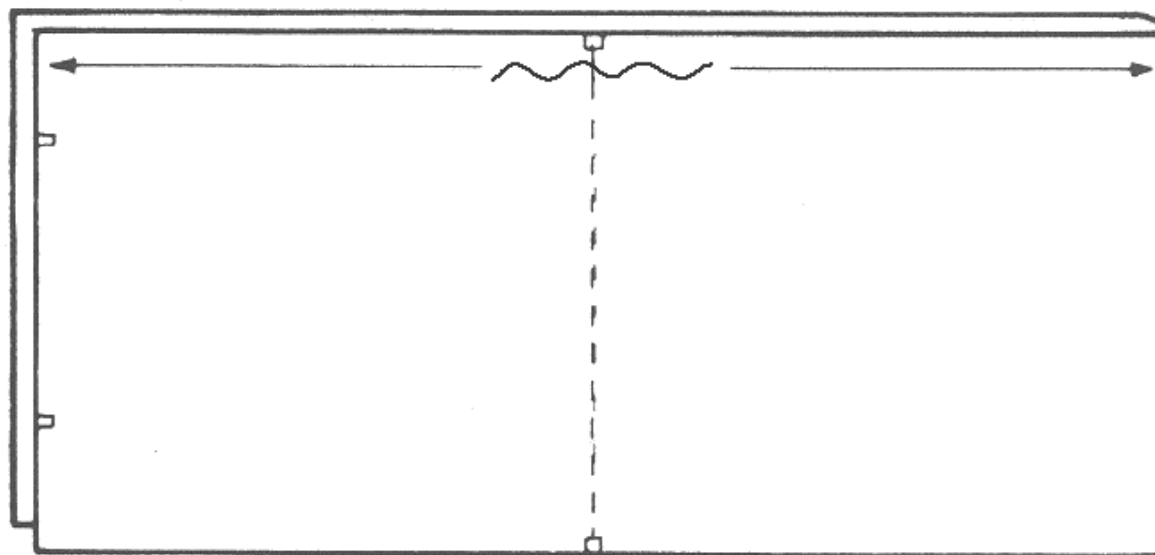
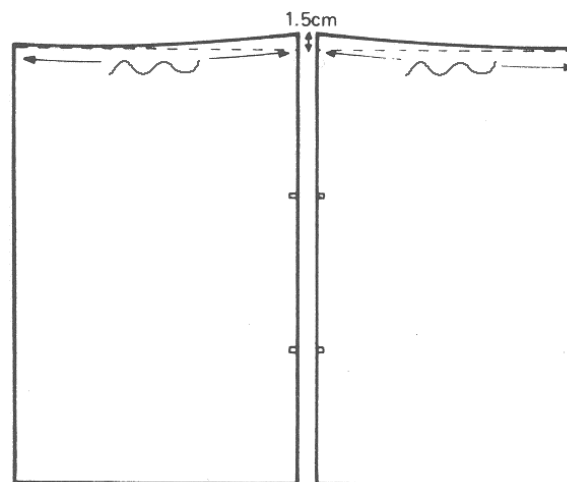


Sukně řasená v pasu



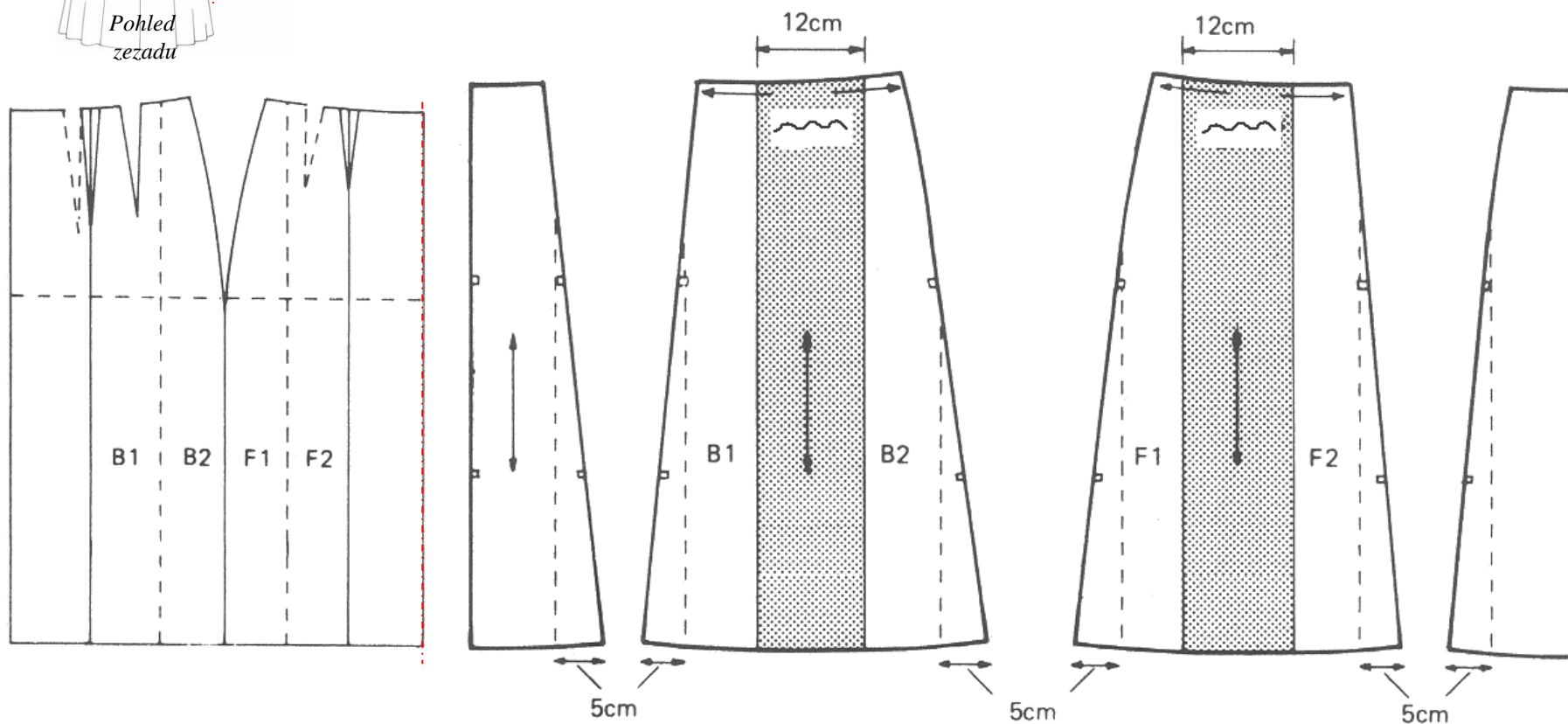
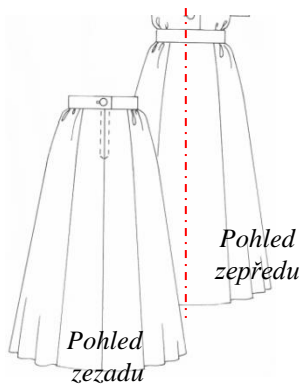
*Pohled
zezadu*

*Pohled
zepředu*



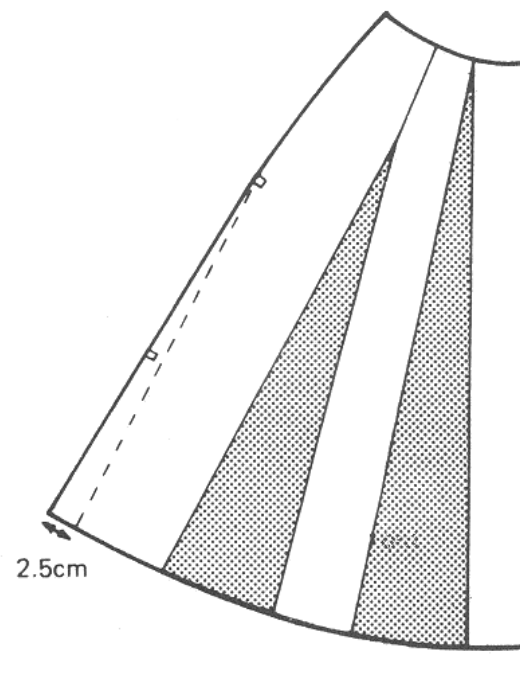
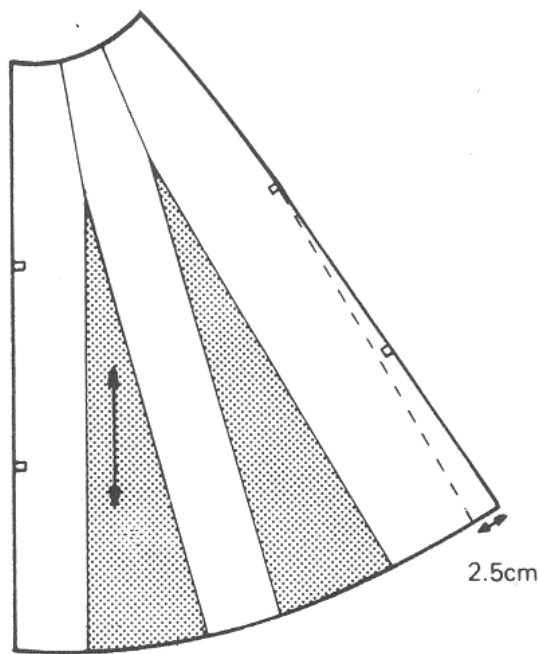
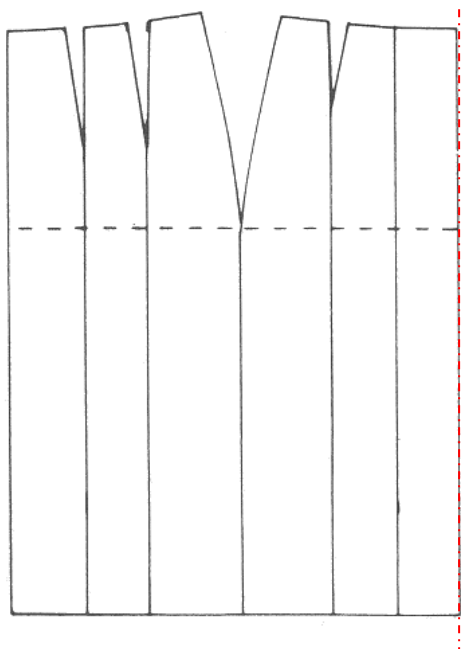
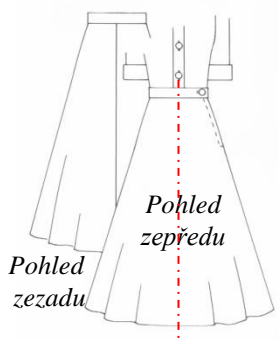


Dílová sukně s řasením v pasu



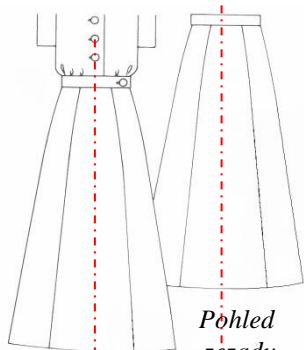


Extra rozšířená sukně siluety „A“



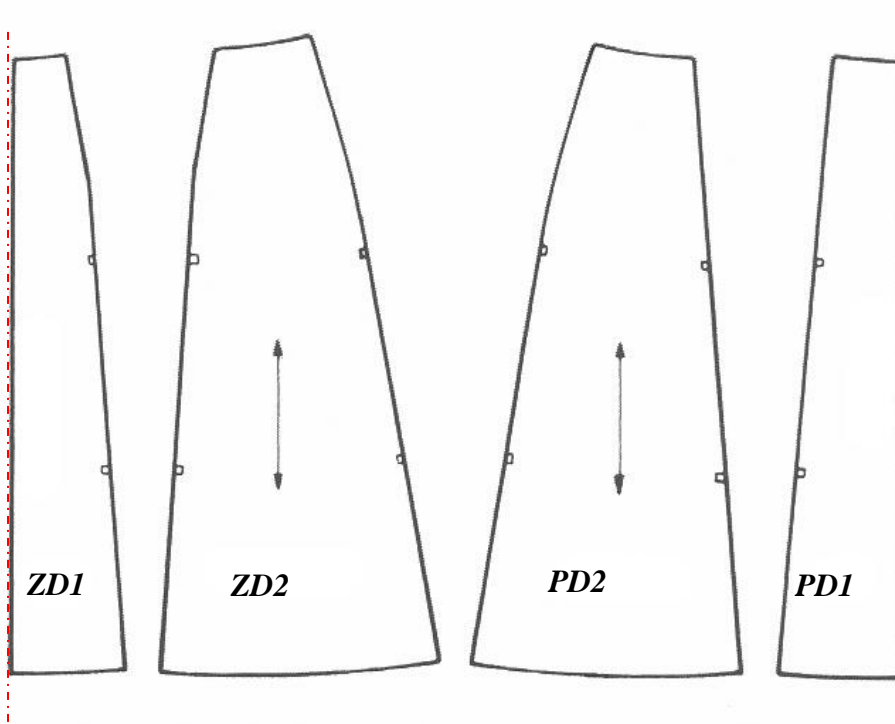
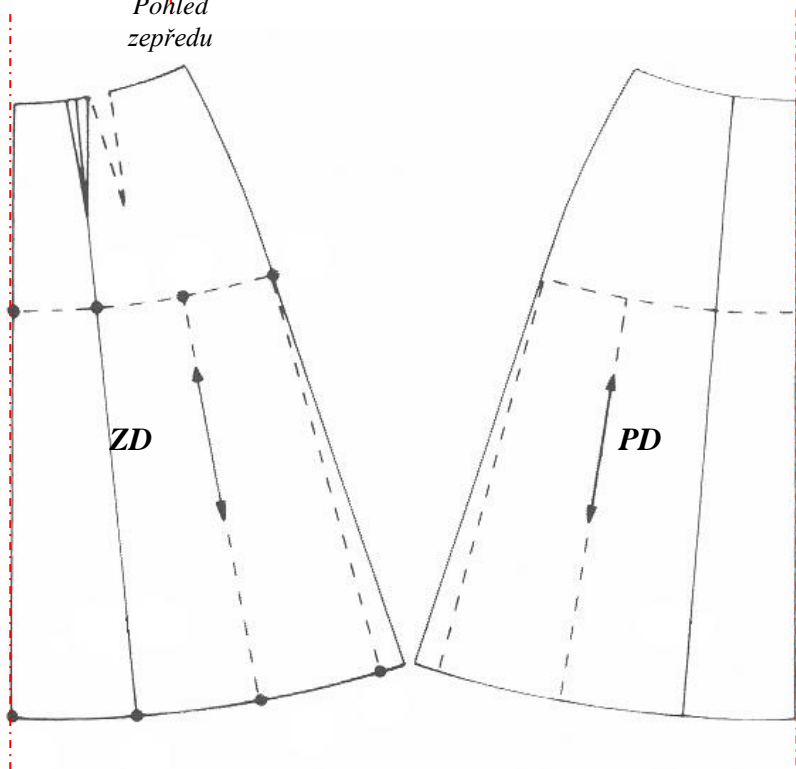


Rozšířená sukně siluety „A“ s podélným členěním



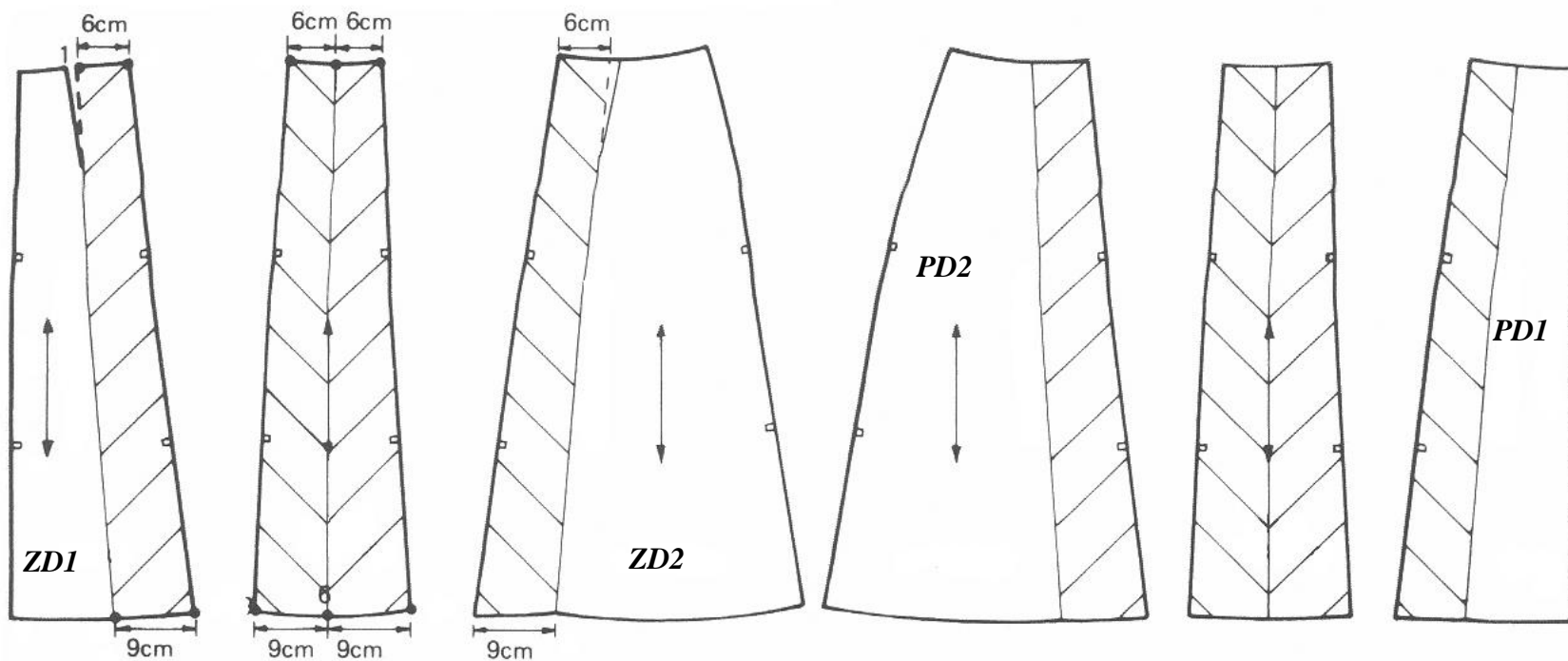
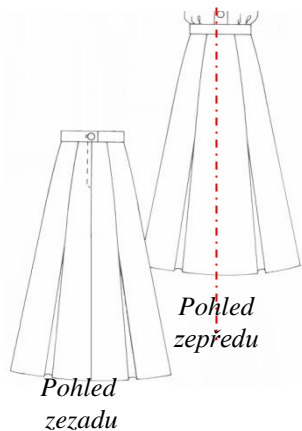
Pohled
zezadu

Pohled
zepředu



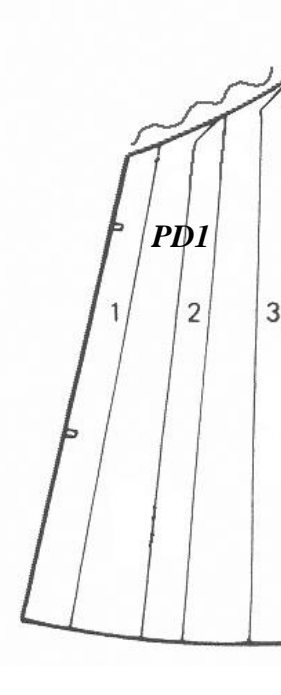
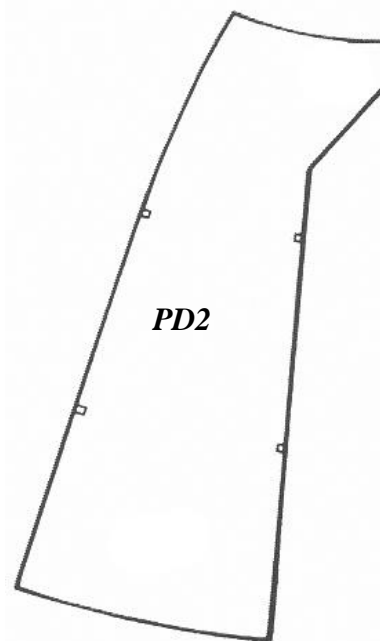
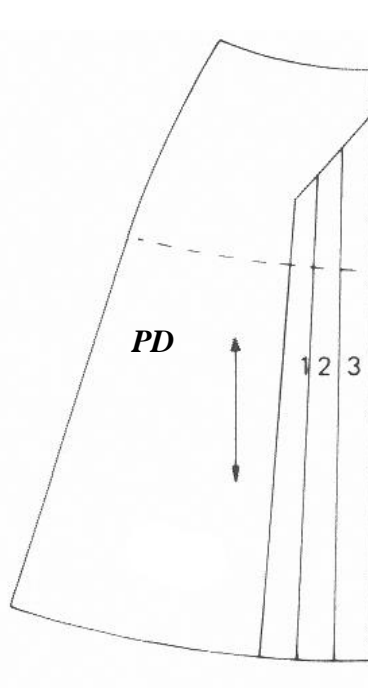
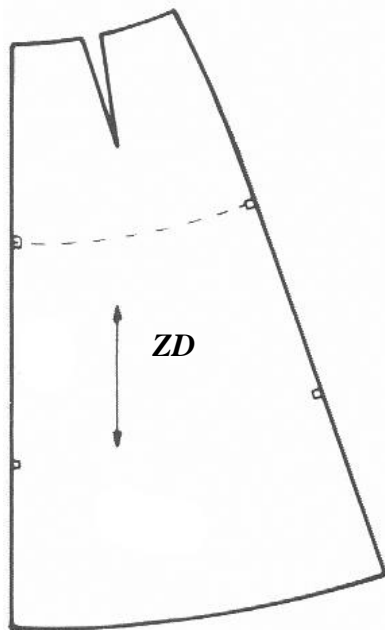
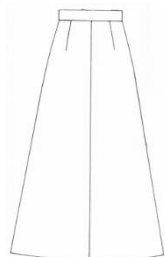
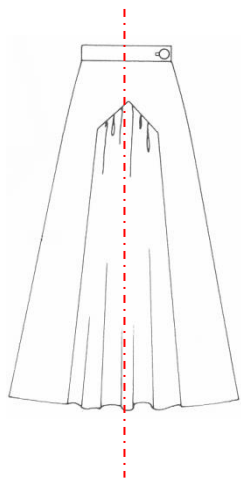


Rozšířená sukně siluety „A“ se záhyby v podélných členicích švech



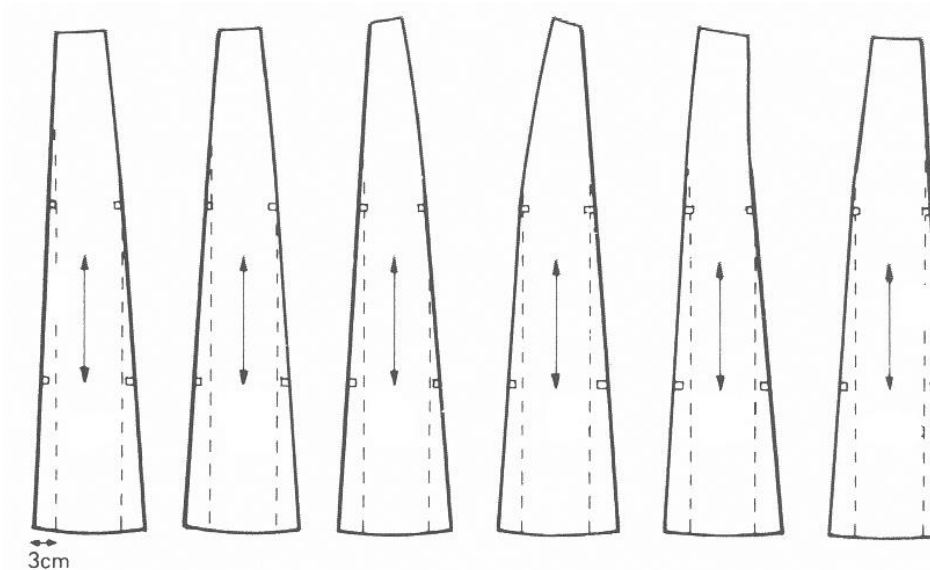
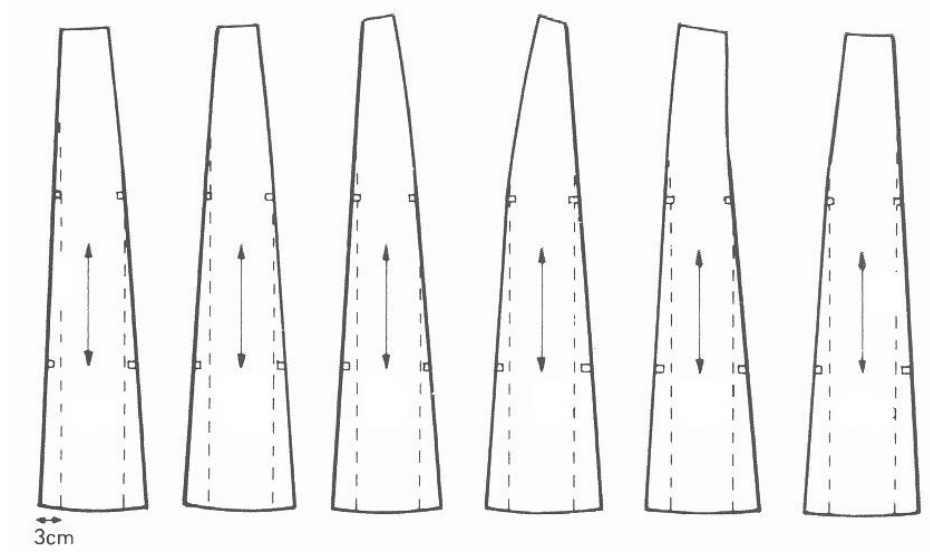
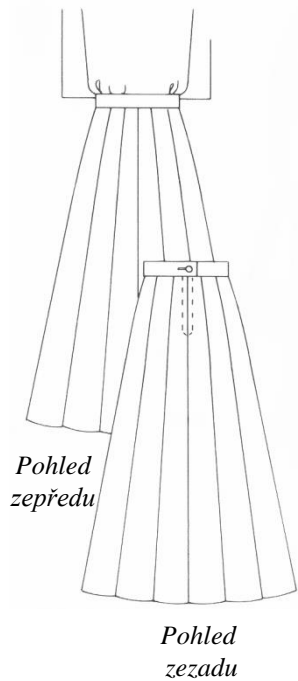


Sukně linie „A“ se vsazeným řaseným dílem na předním dílu





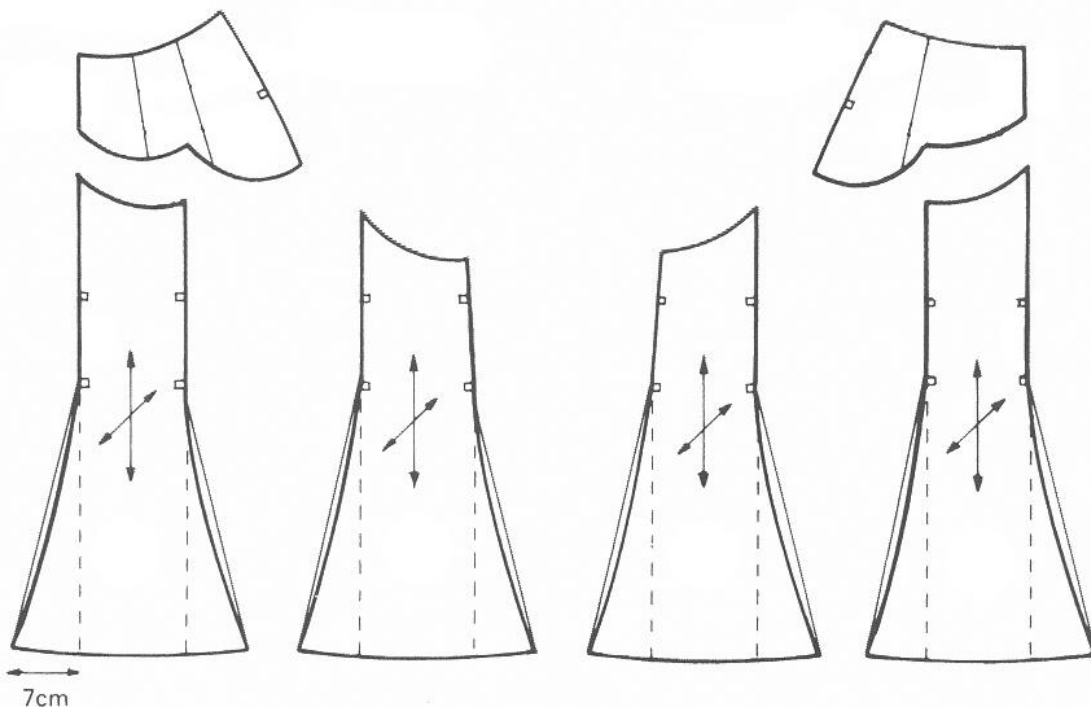
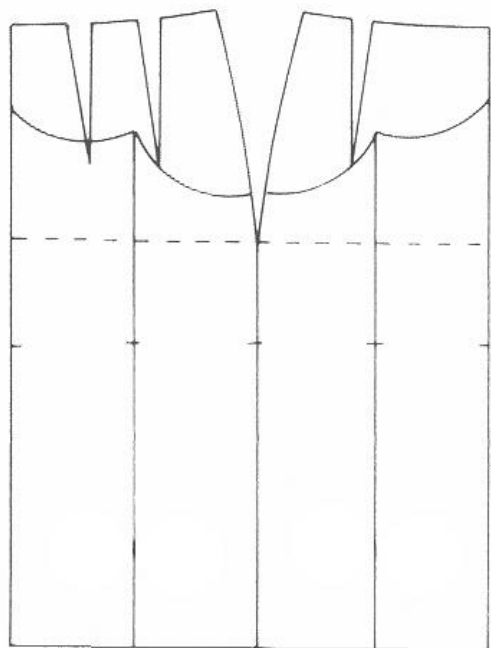
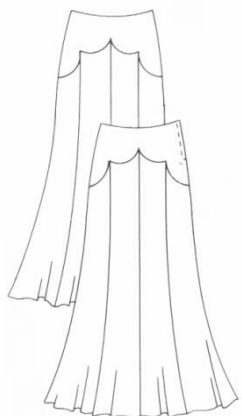
Vícedílná sukně



Lit. zdroj: Winifred Aldrich. Metric Pattern Cutting.
4th edition. Blackwell Publishing Ltd. 2006.
ISBN-10: 1405102780

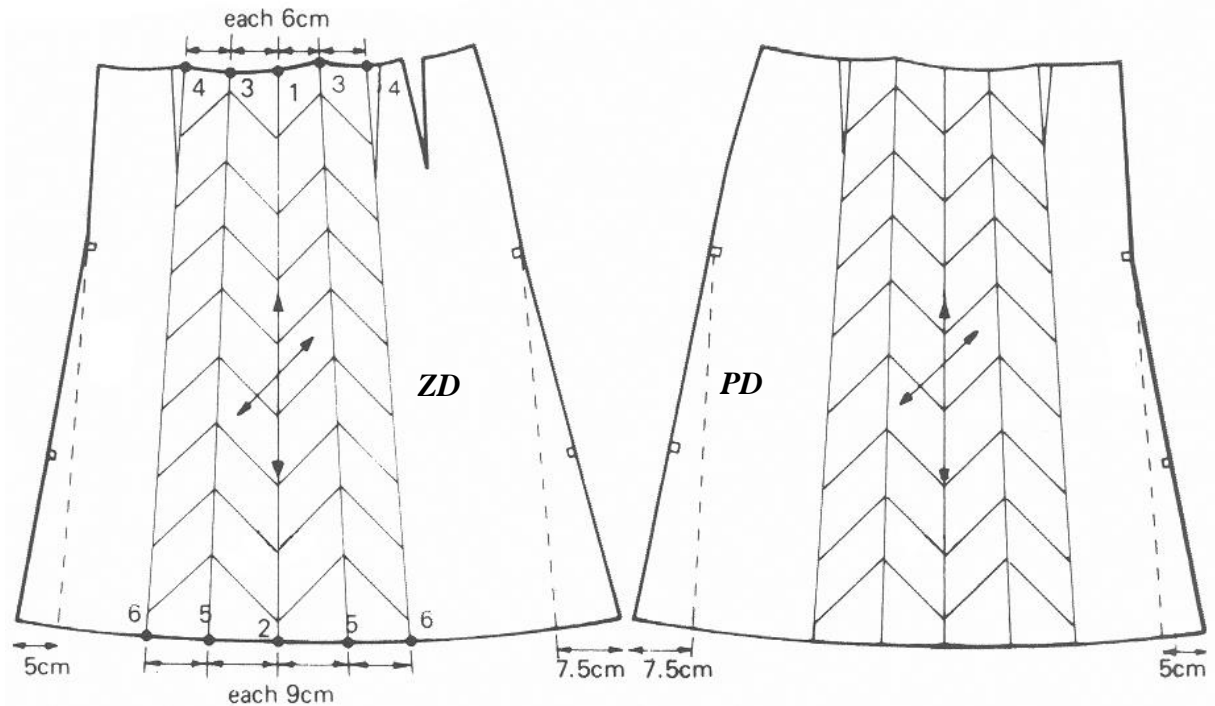
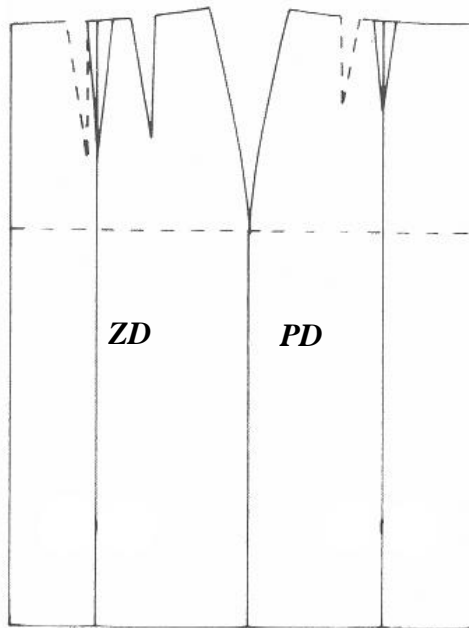
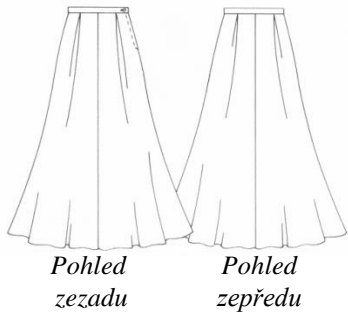


Sukně se sedlem na zadním a předním dílu.
V dolní části je podélně členěná,
členící díly se k dolnímu kraji rozšiřují.



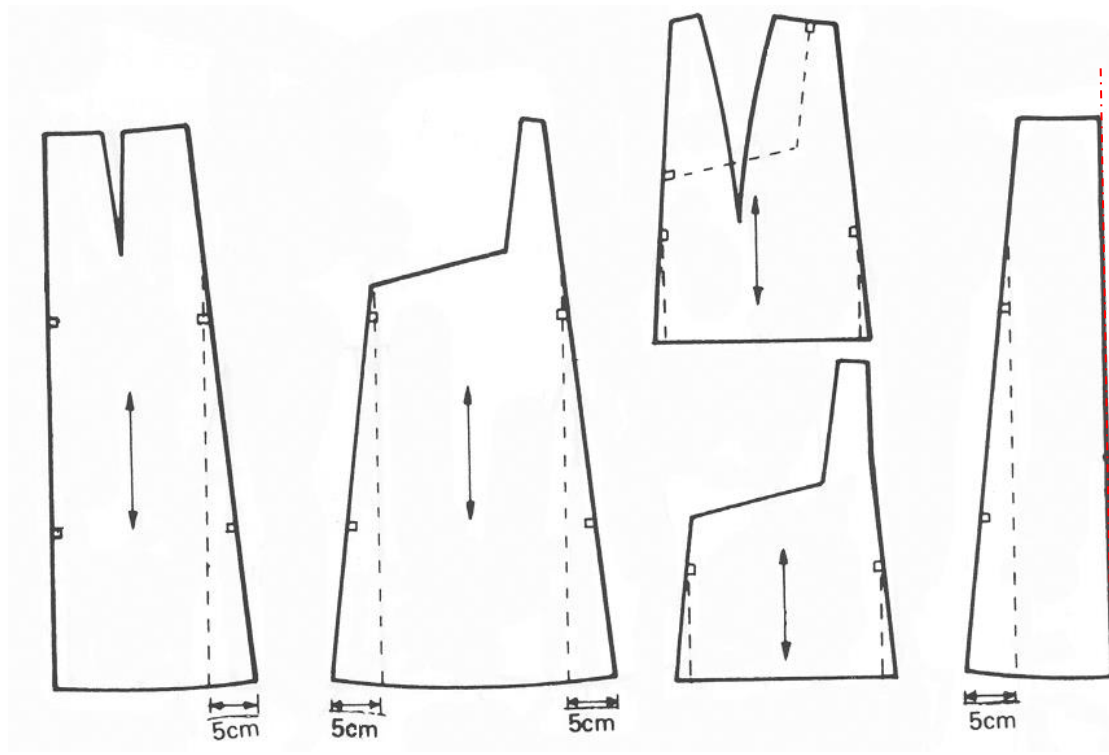
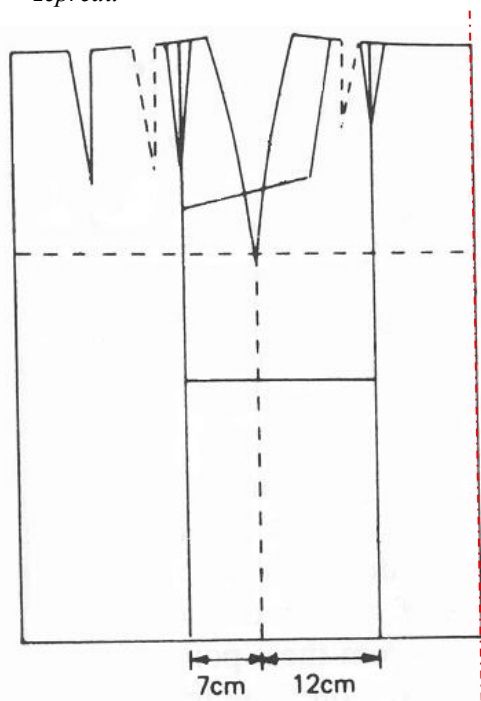
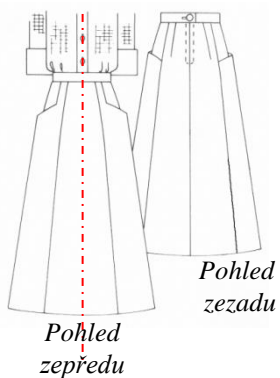


Sukně linie „A“ se nesežehlenými protizáhyby



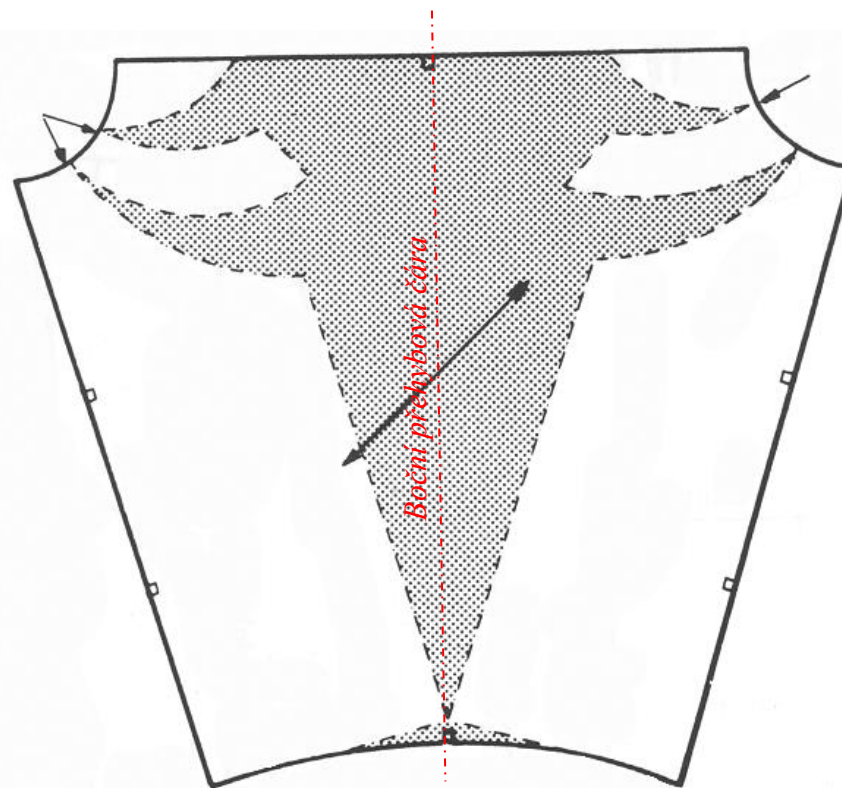
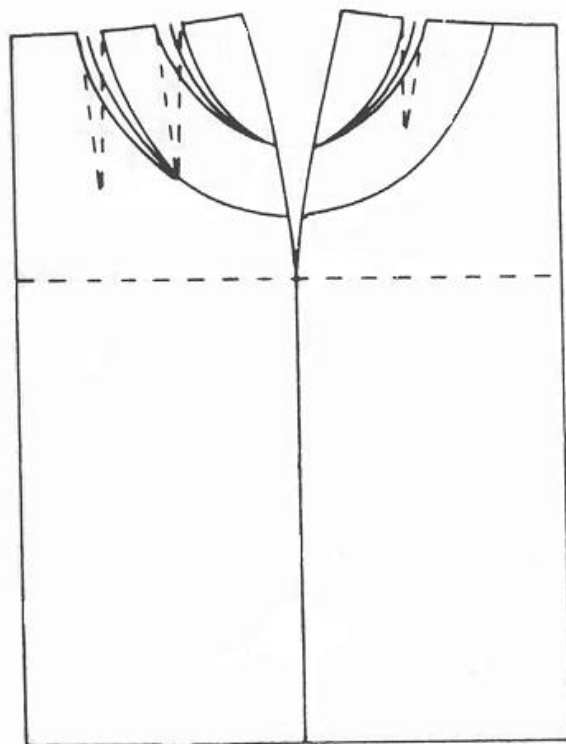
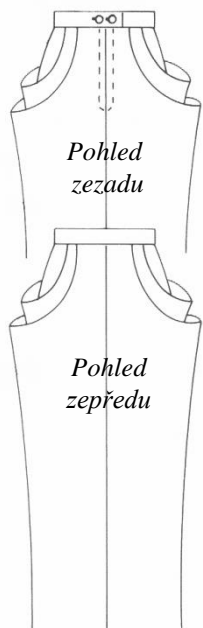


Sukně linie „A“ s bočními včleněnými kapsami



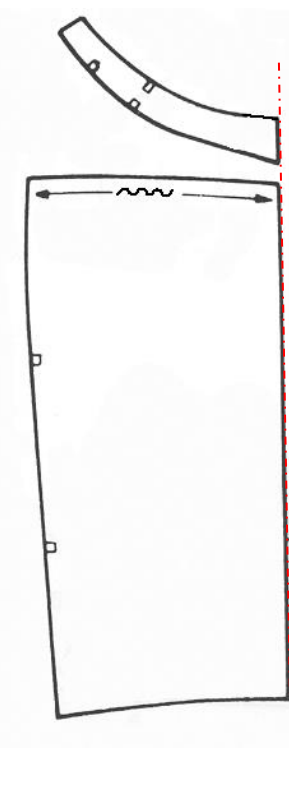
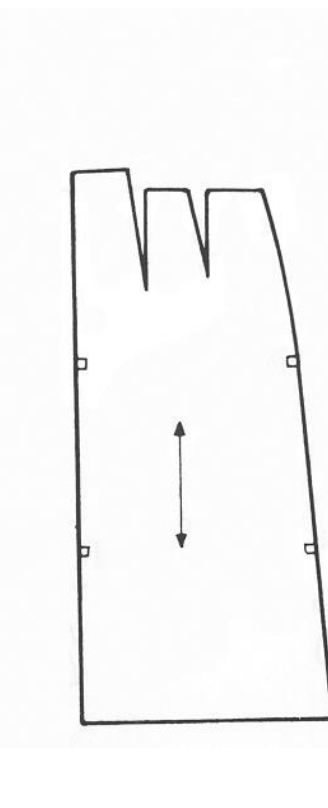
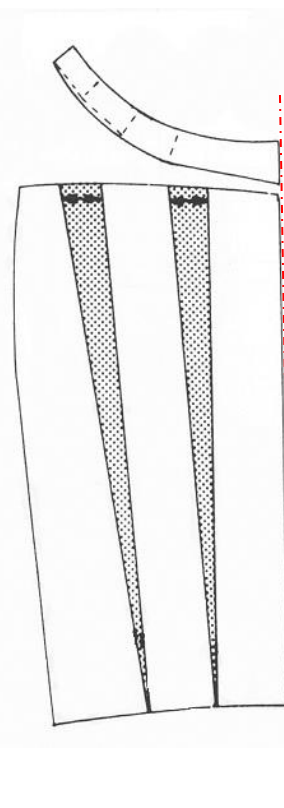
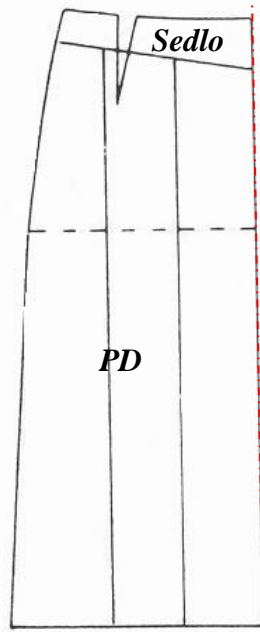
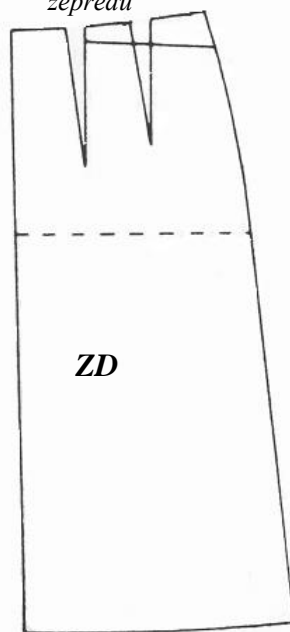
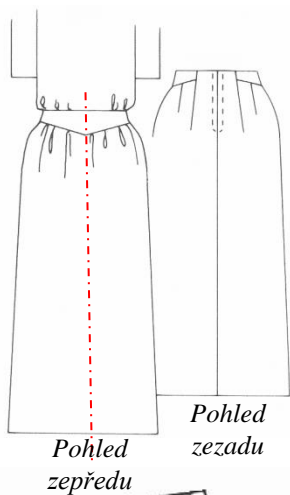


Sukně zúžená k dolnímu kraji typu „Cowl“



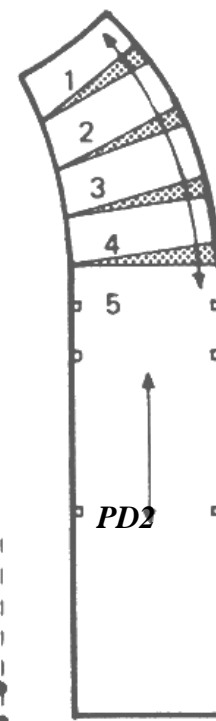
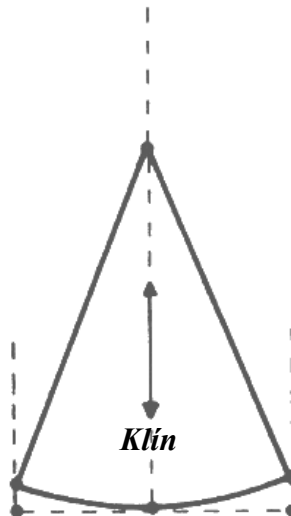
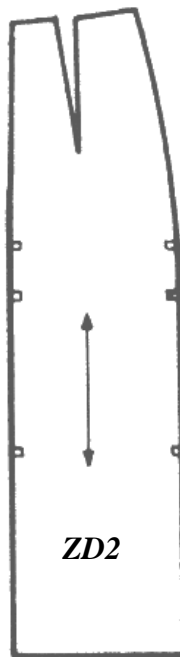
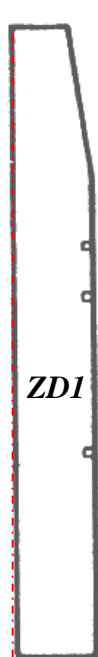
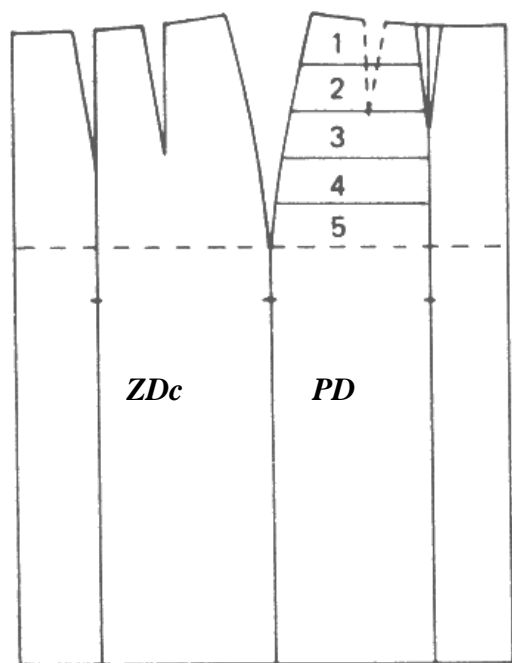
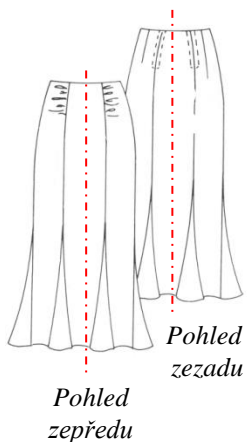


Sukně s tvarovaným pasem a řasením v členícím švu



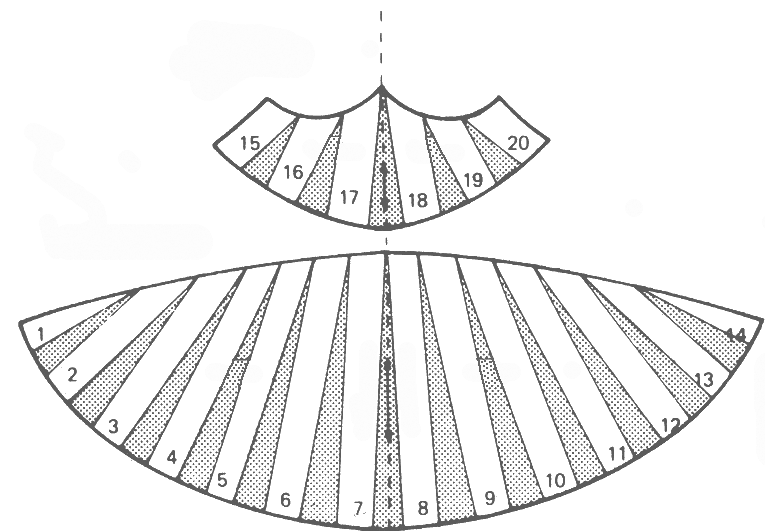
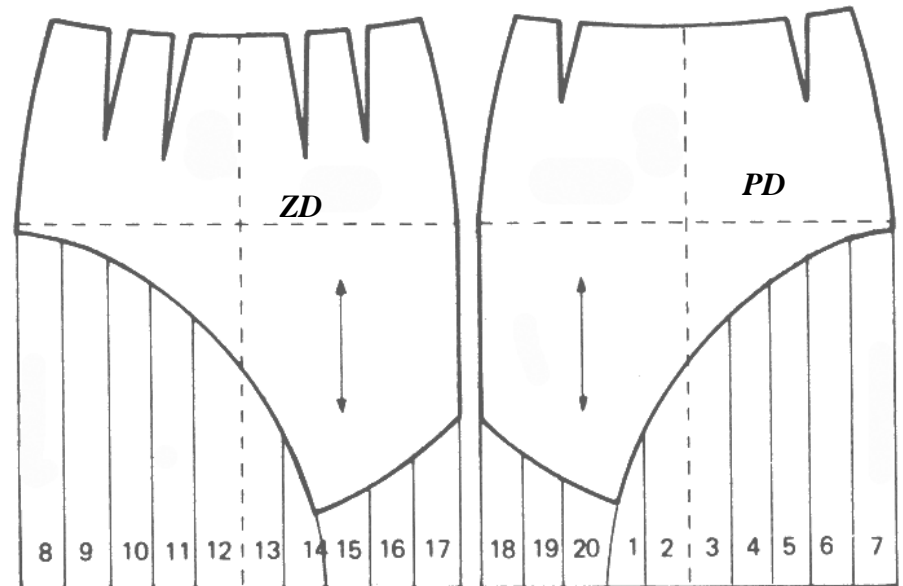
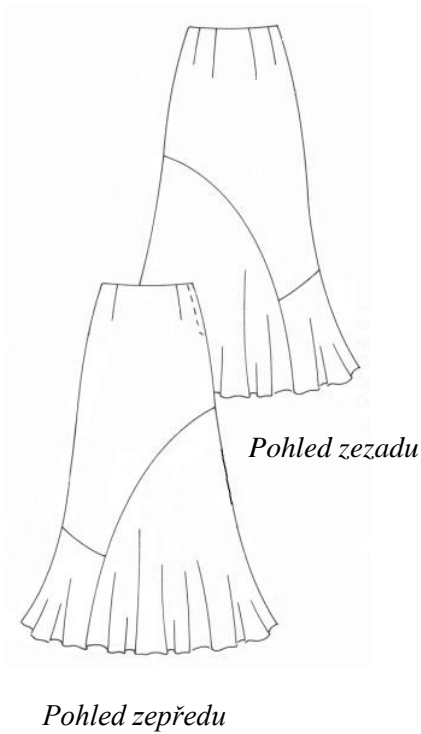


Sukně se vsazenými zvonovými klíny v dolním kraji a řasením v členicím švu





Asymetricky členěná sukně s volánem v dolním kraji

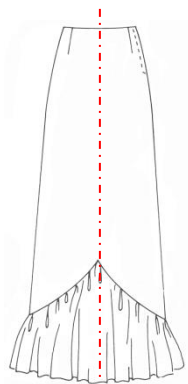


Volány v bočních krajích

Lit. zdroj: Winifred Aldrich. Metric Pattern Cutting.
4th edition. Blackwell Publishing Ltd. 2006.
ISBN-10: 1405102780



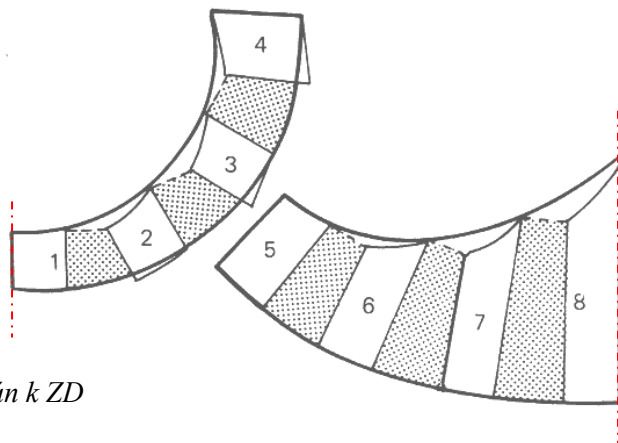
Sukně s volánem v dolním kraji



Pohled zepředu



Pohled zezadu



Volán k ZD

Volán k PD

