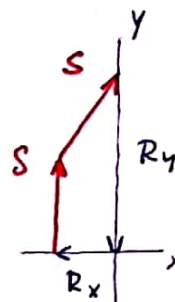
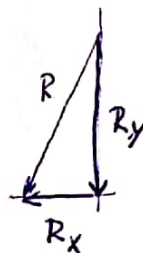
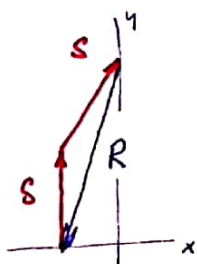
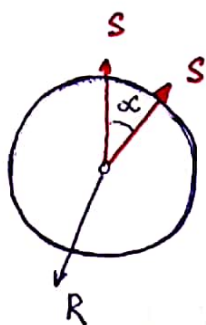
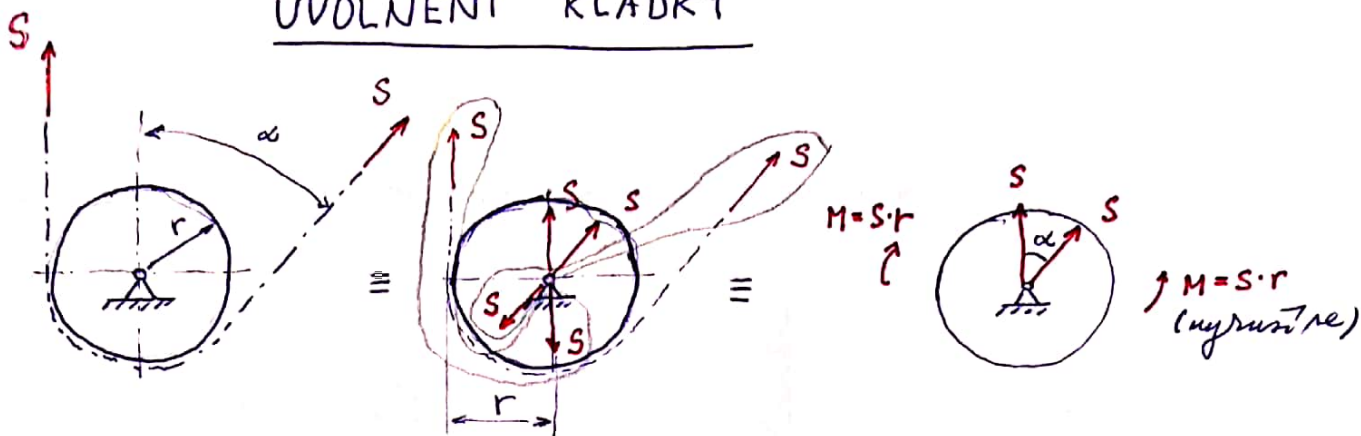


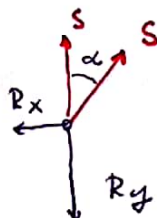
# UVOLNĚNÍ KLADKY



Příčinné věty:

$$(1) \quad x: S \cdot \sin \alpha - R_x = 0$$

$$(2) \quad y: S + S \cos \alpha - R_y = 0$$



$$(1) \quad R_x = S \cdot \sin \alpha$$

$$(2) \quad R_y = S (1 + \cos \alpha)$$