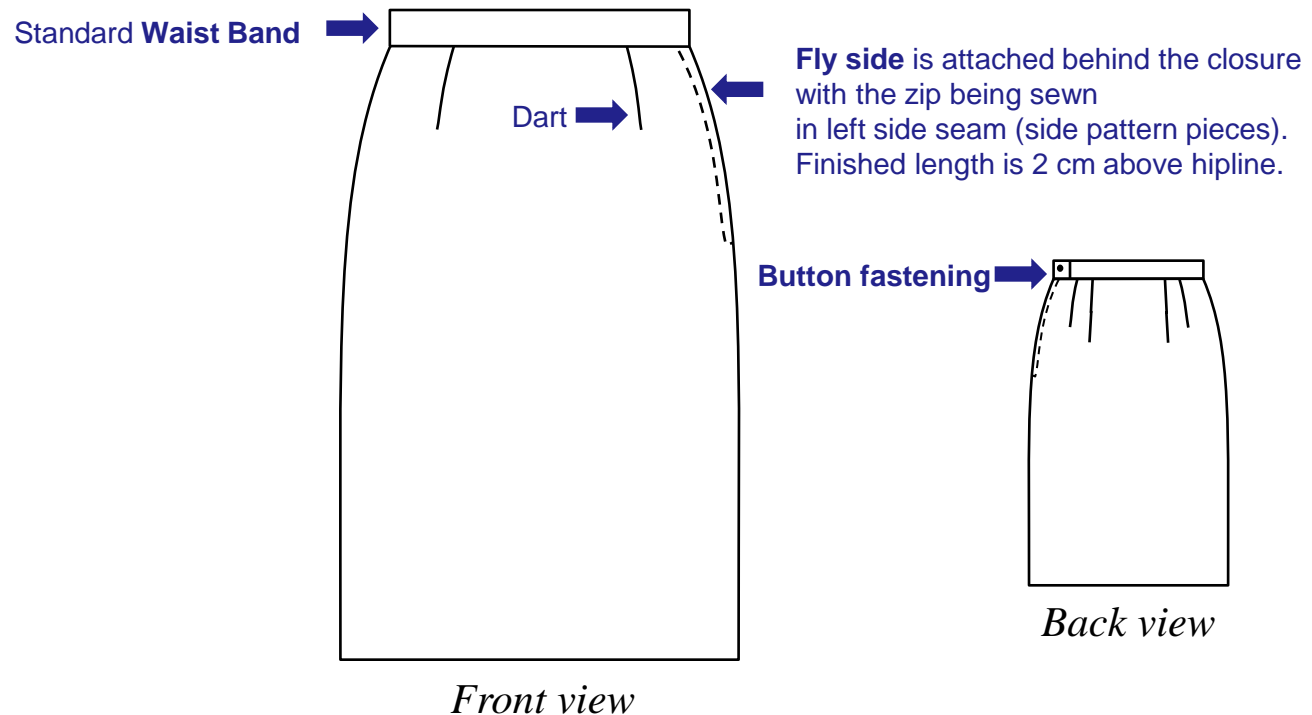




SKIRT BLOCK PATTERN



Fashion technical sketch



Straight skirt is constructed of simple woven rectangles wrapped around the body. The skirt is gathered at the waist, the straight skirt uses darts to eliminate the fullness, thus creating a smoother line. This slim-fitting garment can have a pleat or slit opening from the hem in the centre back for ease of movement.



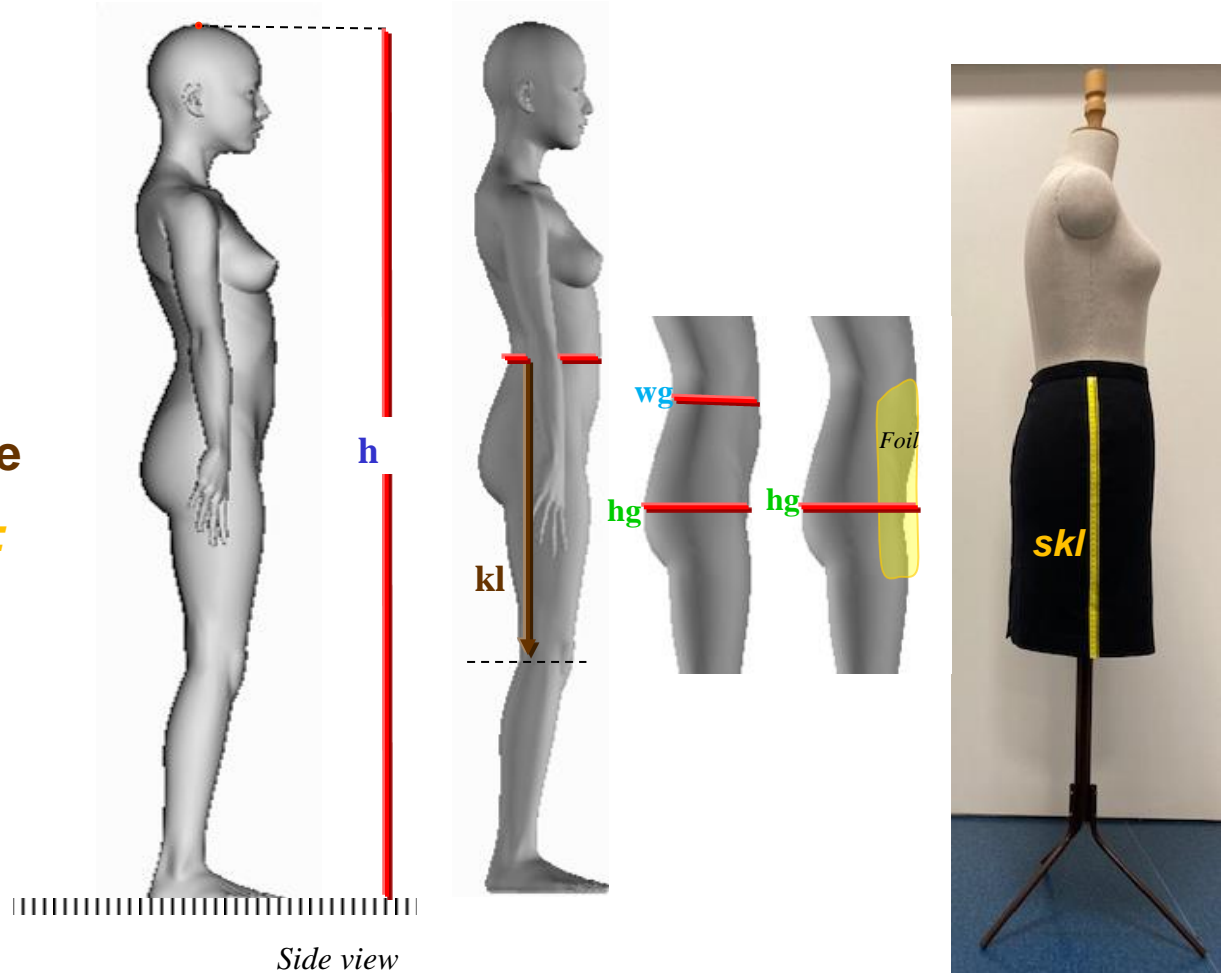
Measurements required

Body measurements:

- (h) – Body height
- (wg) – Waist girth
- (hg) – Hip girth
- (kl) – Length to knee

Garment measurements:

- (skl) – Skirt length





The **construction points** are named according to their place on the body surface and according to the number of construction steps and they are marked by letters and numbers e.g.

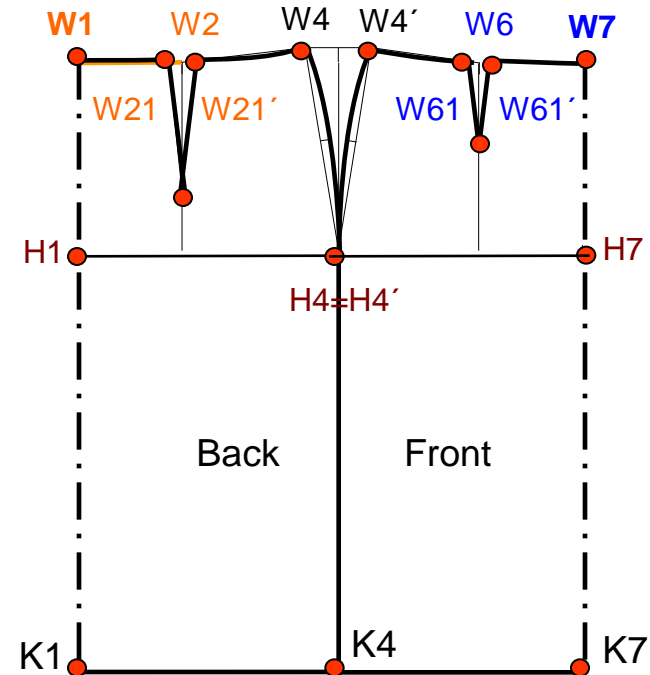
horizontal line **w** - **W1** - vertical line **1**

horizontal line **w** - **W7** - vertical line **7**

horizontal line **w** - **W2** - vertical line **2**

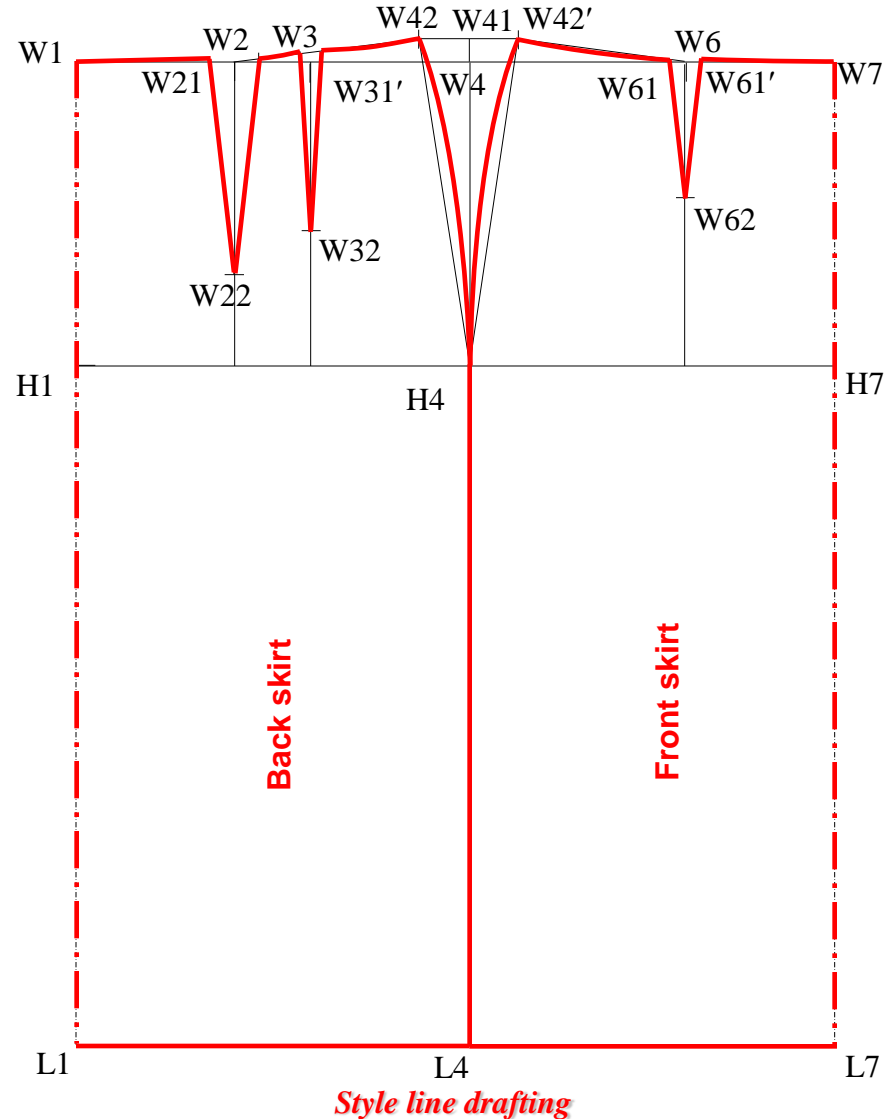
- **W21** - step **1th**

- **W21'** - the balance point relates to point **W21**



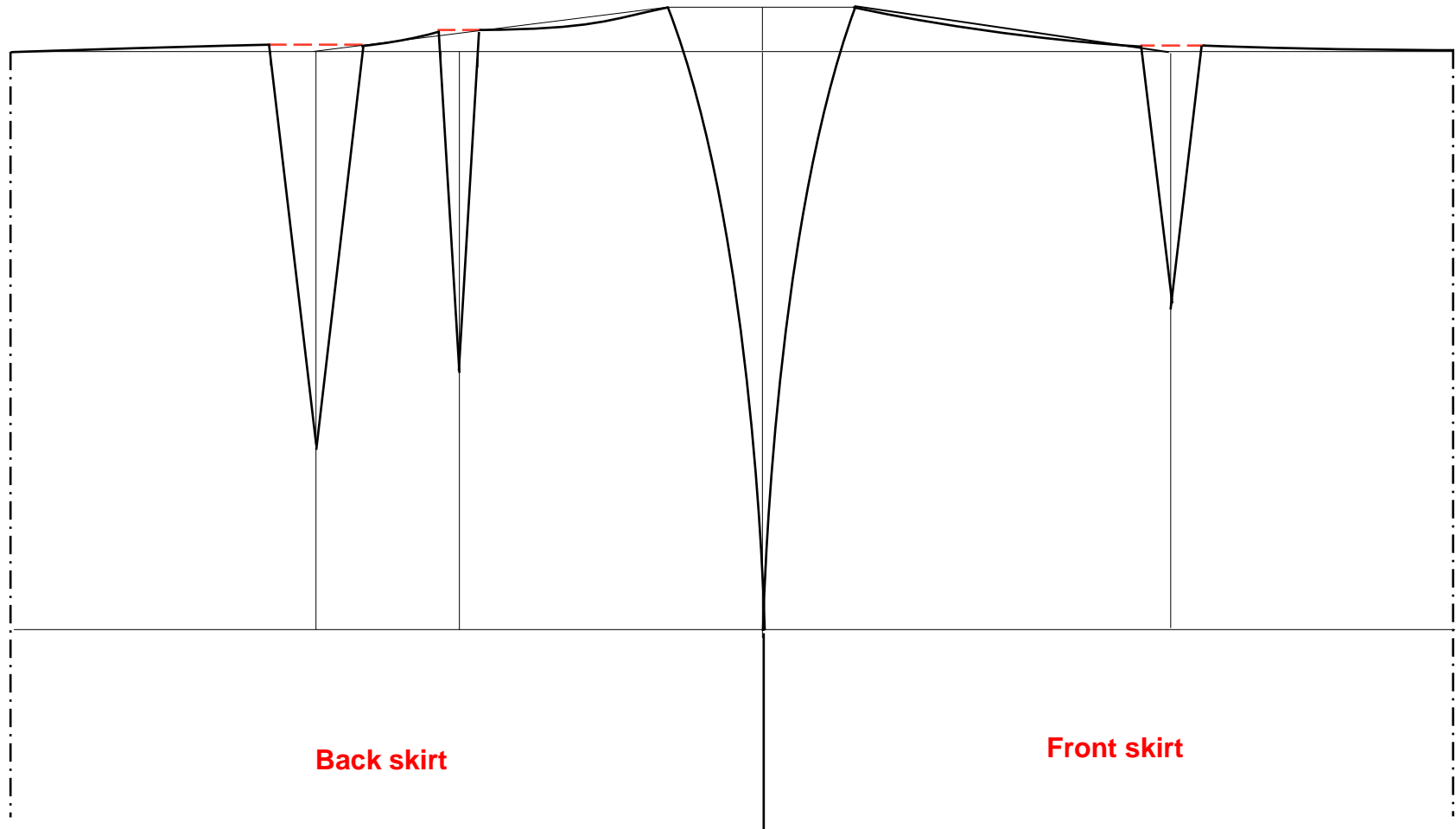
Construction steps - SKIRT BLOCK

1. back centre line 1
2. waist line $w \perp 1 \Rightarrow W1$
3. hip line $W1 H1$ $0.1h + 3$
4. skirt length $W1 L1$ skl
5. hip width $H1 H7$ $0.5hg + \text{easy allowance (1cm)}$
6. back skirt width $H1 H4$ $0.25hg + \text{easy allowance (1cm)}$
7. side line $4 \perp h \Rightarrow W4, L4$
8. increasing waist line $W4 W41$ $k = 1\text{cm to } 2\text{ cm}$
9. Balance factor =suppression
 $\text{Sup} = H1 H7 - (0.5wg + \text{easy allowance } 1\text{cm})$
10. side seam dart $W42 W42'$ 0.5 Sup
11. back dart positions $W1 W2$ $0.4 H1 H4$
 $W1 W3$ $0.6 H1 H4$
12. front dart position $W7 W6$ $0.4 H4 H7$
13. centre dart lines $2, 3, 6 \perp w$
14. waist line drafting $W42 W2, W42' W6$
15. back skirt dart $W21 W21'$ 0.24 Sup
 $W31 W31'$ 0.10 Sup
16. front skirt dart $W61 W61'$ 0.16 Sup
17. back dart lengths $W2 W22$ $k = 13\text{cm to } 15\text{cm}$
 $W3 W32$ $k = 8\text{cm to } 12\text{cm}$
18. front dart length $W6 W62$ $k = 7\text{cm to } 10\text{cm}$
19. auxiliary line $W42 H4 L4, W42' H4 L4$
20. back dart leg lengths
 correction $W31 W32 = W31' W32$
22. front dart leg lengths $W61 W62 = W61' W62$
23. auxiliary line $W2 W42$
24. auxiliary line $W6 W42'$





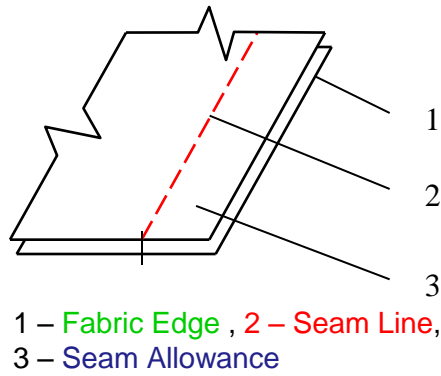
Correction of the lengths of dart legs





Final Pattern ...is the pattern from which the garment will be cut.

Grain line - the way that a pattern is cut out when it is laid out on a piece of fabric.



Technical sketch

