

Knowledge of Textile Goods

Teacher: Ing. Marie Havlová, Ph.D.

Lesson No. 8: [Knitted fabric colour patterns identification](#)

Colour motifs of pattern

The multicoloured pattern may be created by:

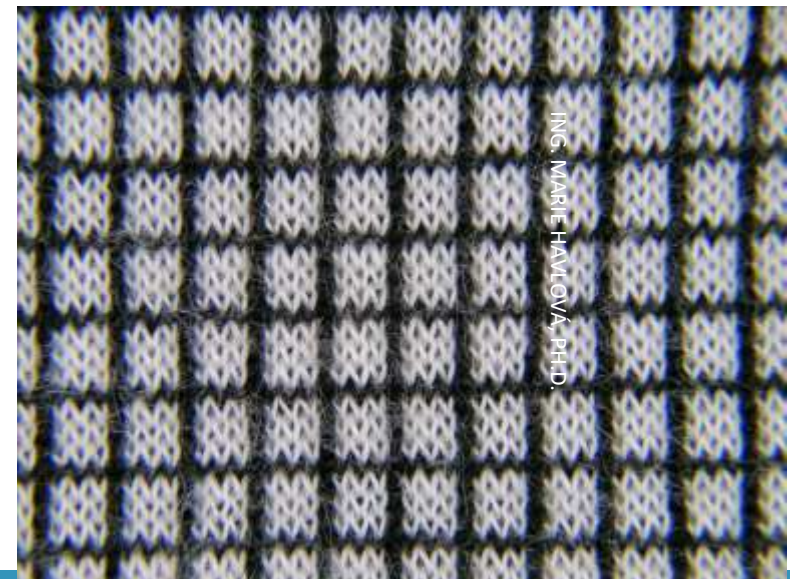
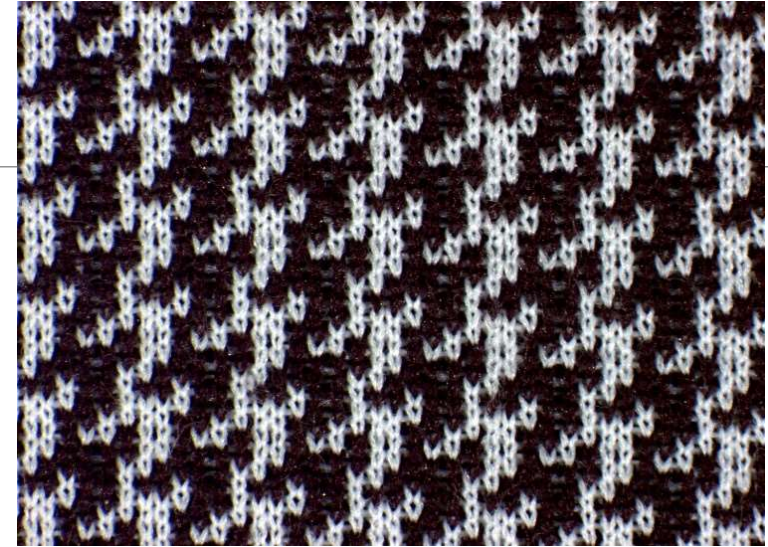
- Some structure of knitted fabric + by using different colored threads
- Textile printing

Then the patterns may be generated similar to the woven fabrics:

- Checks
- Houndstooth check
- Fishbone
- Diagonal
- Reversible pattern
- Paisley pattern
- Patchwork pattern
- ...



Definitions must be modified due to different fabric constructions.



Stripe

Alternating of two or more colors in the course or wale direction.

The width of the stripes can be regular or irregular.



Check

The pattern is characterized by transverse and longitudinal colored stripes grouped in the form of checks or rectangles.

The pattern can be created using colored threads or as the printed pattern.



Dogstooth check

Houndstooth check

The pattern imitates the characteristic pattern that was originally used on the woven fabrics.



Argyle pattern

It is a rhombic design motif in an intarsia fabric.

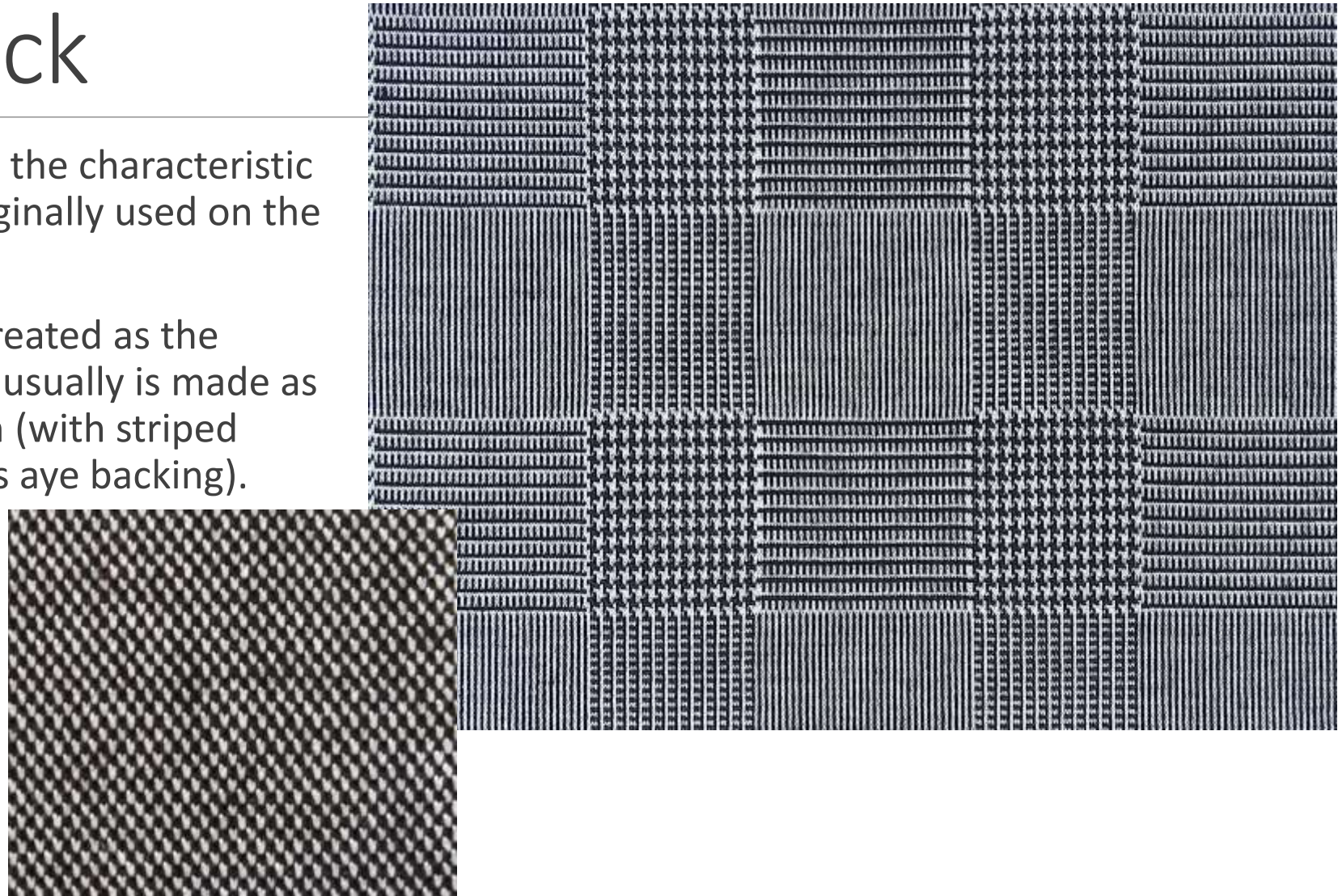
This pattern is composed of diamonds of various colours on a plain background, is used in knitted garments such as sweaters and socks.



Glen check

The pattern imitates the characteristic pattern that was originally used on the woven fabrics.

Glen check can be created as the printed pattern, but usually is made as the jacquard pattern (with striped backing or with birds eye backing).



Patchwork pattern



Norwegian pattern

It is two or more coloured pattern, which shows the winter motifs typical for the Nordic countries (snowflakes, reindeers, ...).



Bordure

Bordure – is a strip of the pattern that borders of the fabric or a final product.

In the pattern itself may be various motives – floral, geometric, norwegian, ...

Pattern may be printed or knitted.



Ombрэ

Ombрэ – is the striped pattern effect in which the alternation of individual stripes creates a shaded effect.

Usually is created using the self-patterning yarn.



Self-patterning sock yarn

It is a printed fancy yarn – flammé or shaded, that creates a pattern by itself when knitted.



Reversible pattern

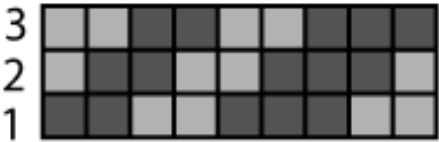
The pattern is created as positive on the face side of the fabric and negative on the back side of the fabric.

Usually is created as the [reverse jacquard fabric](#) that is weft-knitted rib-based fabric in which the design on the effect side is reversed on the other side by alternation of the two component threads between the two sides.

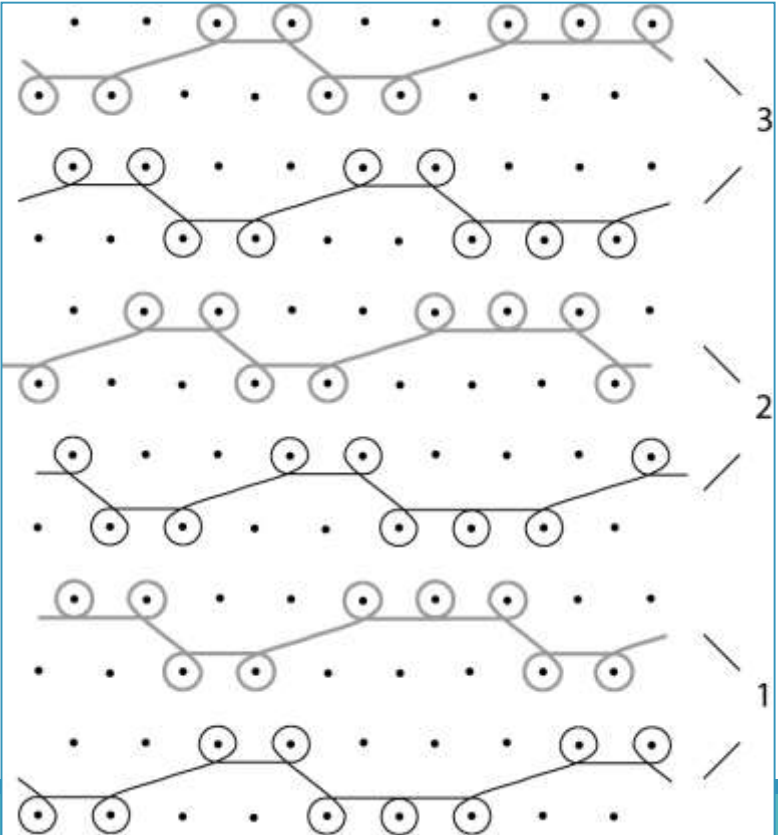
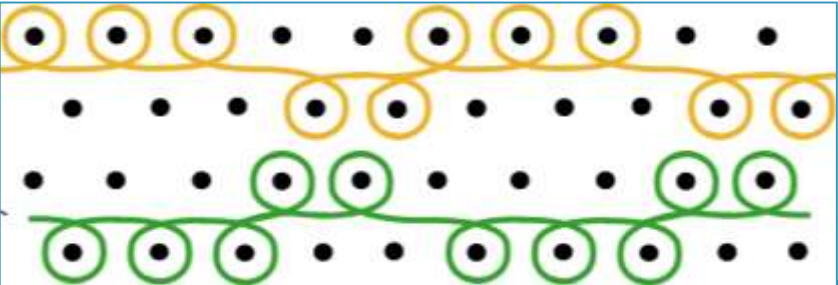


Reverse jacquard fabric

Weft-knitted rib-based fabric in which the design on the effect side is reversed on the other side by alternation of the two component threads between the two sides.

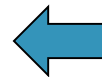


The number of stitches on both fabric sides is equal.

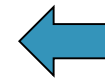




Reversible pattern



Reverse jacquard fabric



Reversible pattern



Reverse jacquard fabric

Rib jacquard fabrics

Weft-knitted rib-based fabrics that **show a multicoloured design motif** on the effect side and striped backing, birdseye backing, plain backing or another multicoloured design motif on the reverse side.

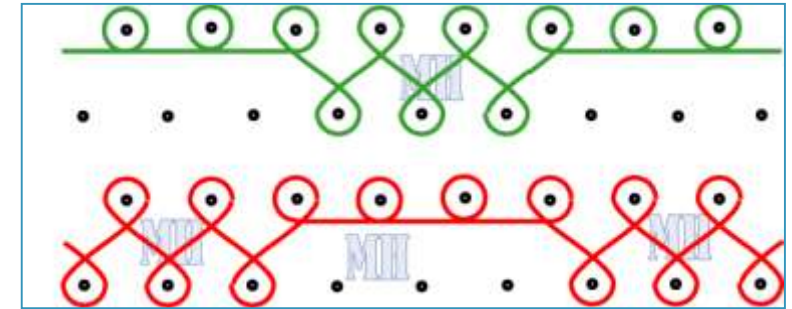
The needles are individually selected for knitting and miss-knitting and the selection of the needles in any one course is complementary to that of the other courses within the repeat.



Striped backing

Reverse side of a rib jacquard fabric that is characterised by successive courses of horizontal stripes of each of the yarns used to produce the design motif.

The effect (*striped backing*) is obtained by knitting on all needles in the set opposite to that used to form the pattern.



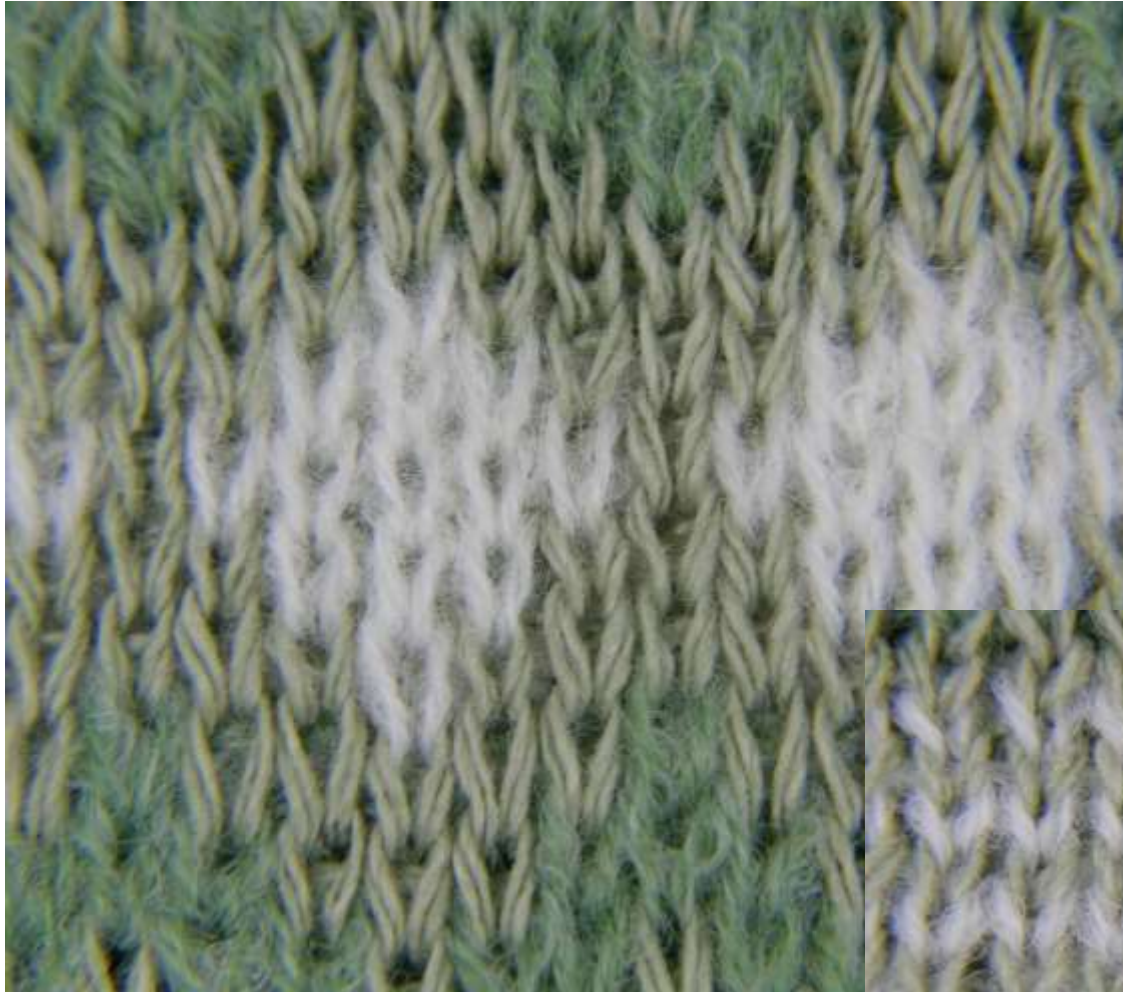
The yarn path notation – for example



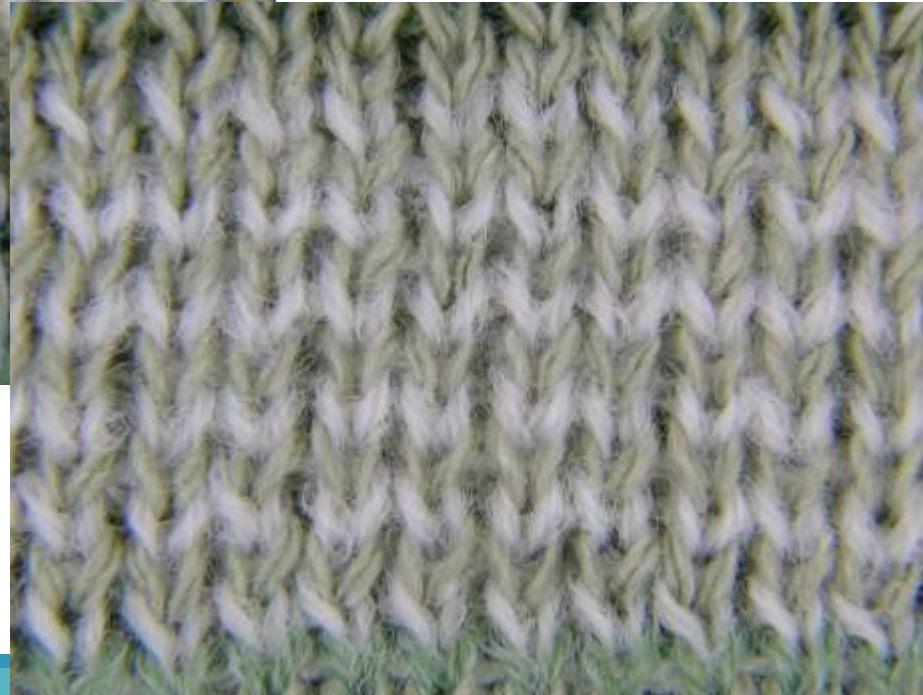
Face side



Reverse side

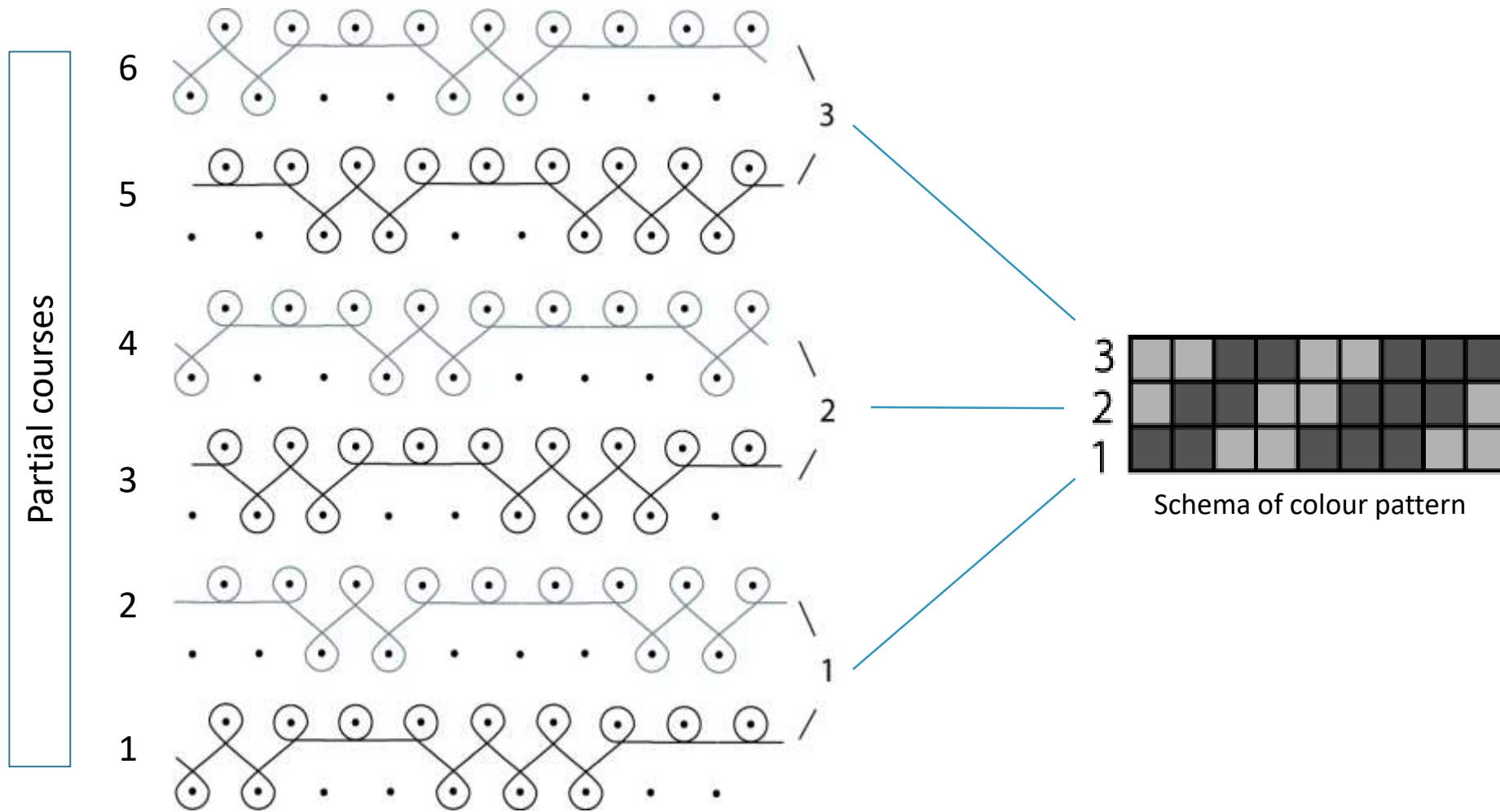


*The effect side in detail
– stitches are
substantially bigger*



*The back side in detail – stitches are
substantially smaller*





The yarn path notation – for example (2-colour motif)

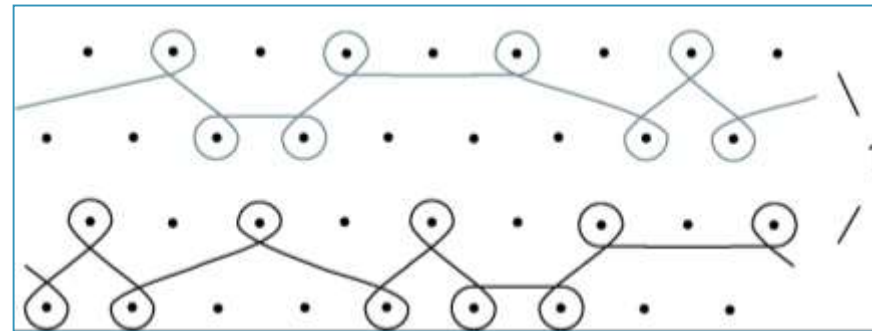
Birdseye backing

Twill back

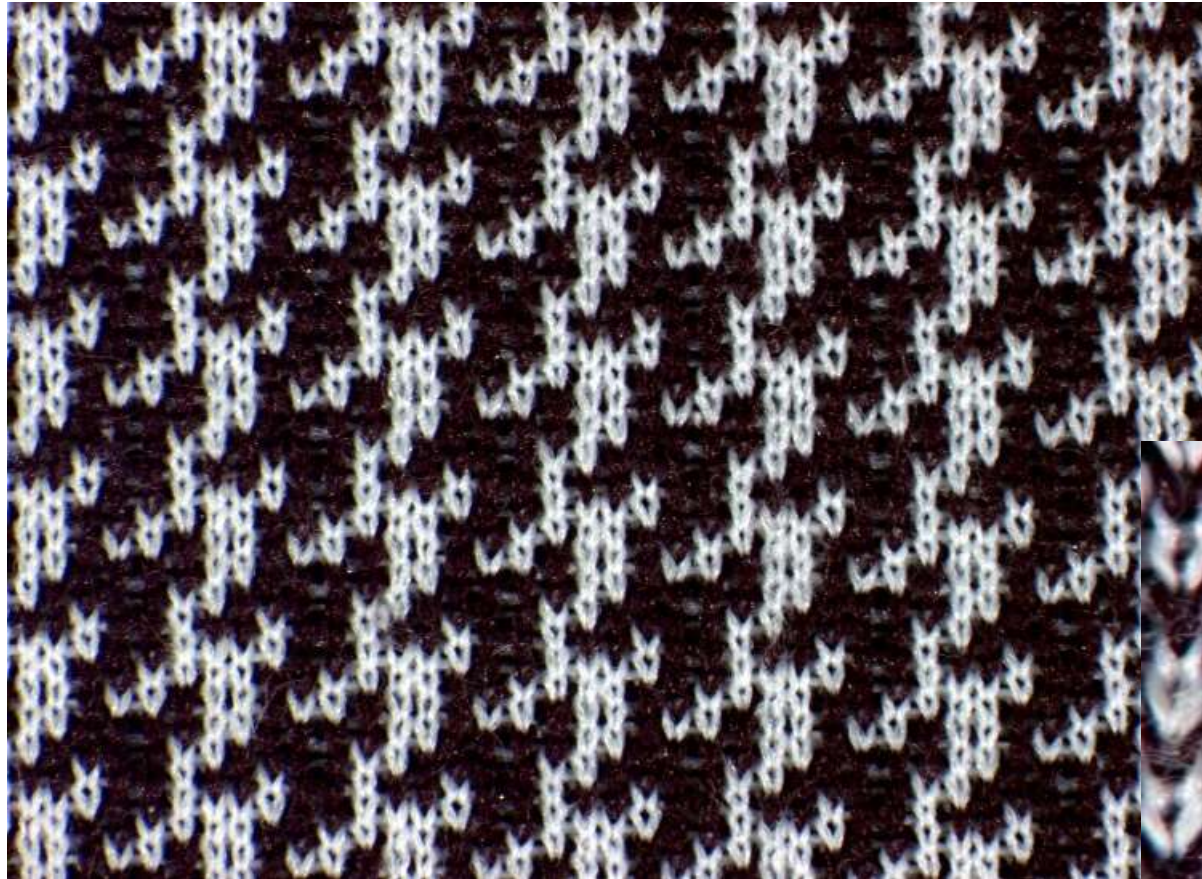
Reverse side of a rib jacquard fabric characterized by courses in which held stitches of one colour alternate with held stitches of another, within and between successive courses.



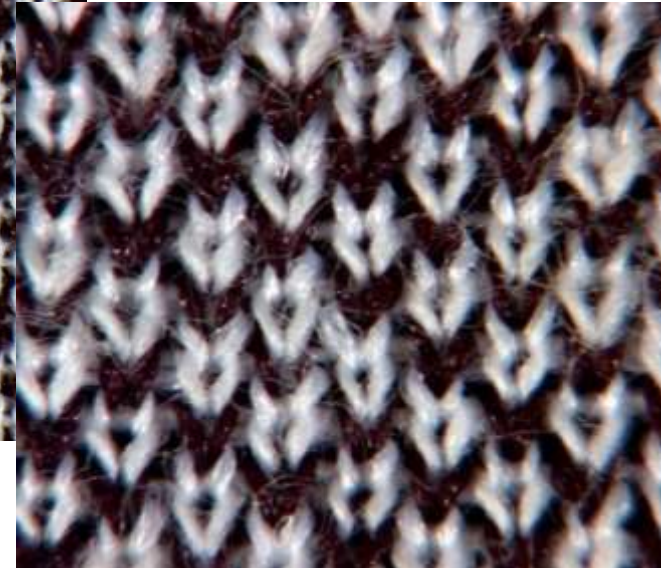
*The characteristic back side – 3-
colour motif*



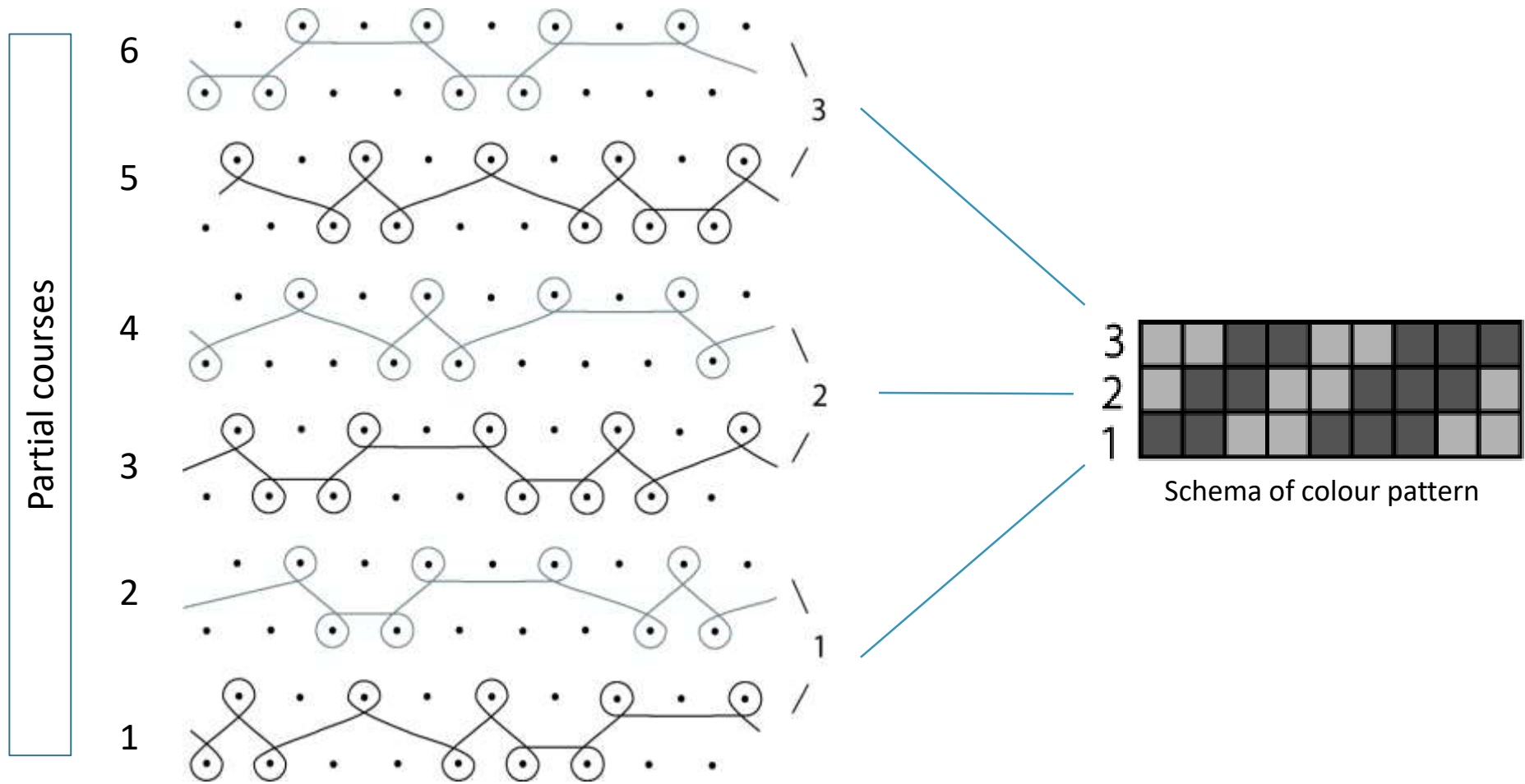
*The yarn path notation – for example (2-
colour motif)*



- The yarn, which currently makes up a pattern knits on the effect side of fabric.
- On the reverse side the even and odd needles alternate in knitting.



Back side – in detail

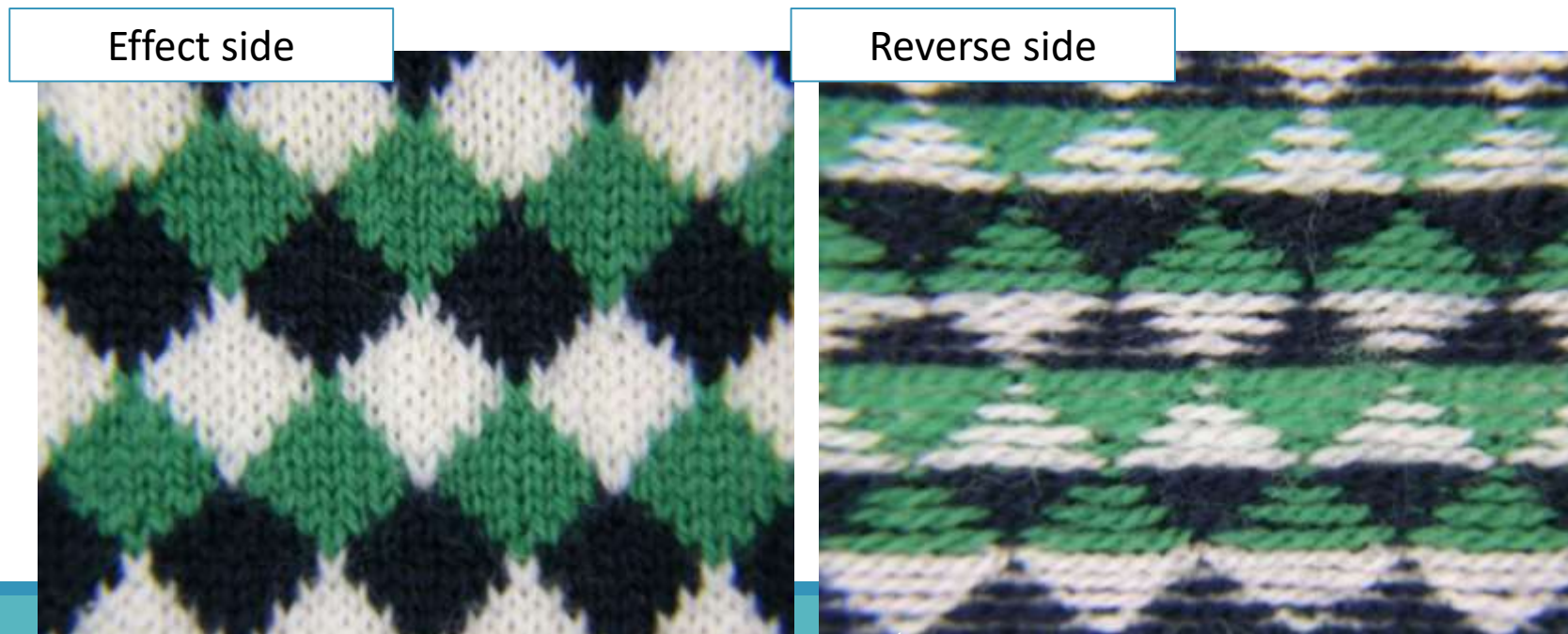


The yarn path notation – for example (2-colour motif)

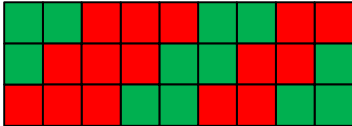
Jersey jacquard fabric (knit-miss)

Weft-knitted jersey-based fabric that shows a multicoloured design motif on the effect side and floats on the reverse side.

The needles are individually selected for knitting and miss-knitting, and the selection in any one course is complementary to that of the other courses within the repeat.

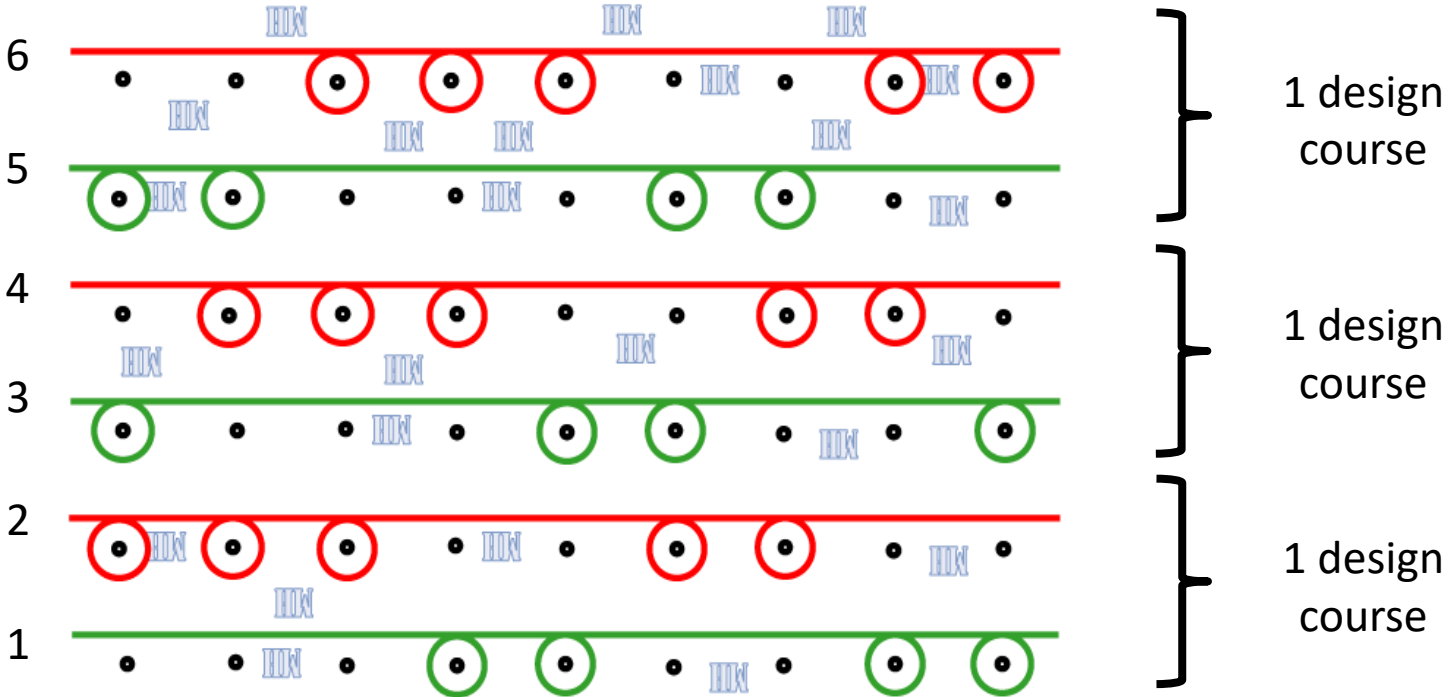


For example:



Schema of colour pattern

Partial courses



Intarsia pattern

Weft-knitted jersey-based, rib-based, or purl-based fabric that incorporates contiguous design motifs in two or more colours.

Each area of colour being knitted from a separate yarn, which is contained entirely within that area.

